

CULTURAL & MATERIAL CONTACTS IN THE ANCIENT NEAR EAST

Proceedings of the International Workshop
1-2 December 2014, Torino

EDITORS

E. Foietta, C. Ferrandi, E. Quirico, F. Giusto,
M. Mortarini, J. Bruno, L. Somma



UNIVERSITÀ DEGLI STUDI DI TORINO

SCIENTIFIC COMMITTEE

Stefano de Martino, Carlo Lippolis, Vito Messina

ORGANIZING COMMITTEE

Enrico Foietta, Carolina Ferrandi, Eleonora Quirico, Francesca Giusto, Mattia Mortarini, Jacopo Bruno, Lorenzo Somma

© 2016 apice libri - Sesto Fiorentino (FI)

ISBN 978-88-99176-19-8

www.apicelibri.it

PREFACE

These Proceedings are the results of the workshop *Cultural & Material Contacts in the Ancient Near East*, held at Torino the 1st and 2nd December 2014. The workshop, organised by Phd and Master Students of the University of Torino, was devoted to young scholars involved in the trending topic of the material and cultural contacts in the Ancient Near East between the 2nd millennium BC and the Parthian and Sasanian Periods. Scholars from many countries (Italy, France, England, Poland, Canada, Hungary, etc.) chose to participate to the call for papers, proposed by the Organizing Committee. The high number of participants has obliged us to select the papers and to open a larger poster session. During the two workshop days the high level of the talks was judged very promising by the participating professors, auditors and contributors and pushed us to publish it rapidly. Now this purpose has been achieved in only one year and a half after the workshop. We are proud of it also because we know that young scholars need publications to grow and to improve their carrier. We know also that usually the first papers trace a deep line in the research and in the history of each scholar. For this reason, we are glad for have given to them the chance of reaching this purpose and we are pleased that their name will be associated to this workshop. The papers, divided here in their respective sessions, show innovative approaches about archaeology, history and philology of the Ancient Near East in an integrated methodology, showing the complexity of the cultural and material contacts of this period and area.

The editors wish to thank the Centro Scavi e Ricerche Archeologiche di Torino per il Medio Oriente e l'Asia (CRAST) and the Università degli Studi di Torino (UniTO) for the publication grants and the Fondazione Fondo Ricerca e Talenti for the financial support of the workshop. We thank also the Scientific Committee – Profs. S. de Martino, C. Lippolis and V. Messina – for their work and their precious help in the reviewing of the papers. We are grateful also to the three chairpersons of the workshop sessions who have moderated and stimulated the debate: Prof. C. Mora (Università di Pavia) for the 2nd millennium, Prof. L. Peyronel (IULM – Milano) for the 1st millennium and Prof. P. Leriche (CNRs, Paris) for the Post-Assyrian Period. We would like to thank Dr. C. Greco, Director of the Museo Egizio di Torino, who has kindly open the workshop the 1st December 2014 and nevertheless, we would like to appreciate the contributors who have actively participated to the conference and, with their papers, to the publication.

The Organizing Committee

Enrico Fioletta, Carolina Ferrandi, Eleonora Quirico, Francesca Giusto, Mattia Mortarini, Jacopo Bruno & Lorenzo Somma

* * *

Questi atti sono il risultato del workshop internazionale *Cultural and Material Contacts in the Ancient Near East*, tenutosi a Torino l'1 e il 2 dicembre 2014. L'evento, organizzato da dottorandi e studenti dell'Università degli Studi di Torino, è stato espressamente rivolto a giovani studiosi interessati alla problematica dei contatti materiali e culturali nel Vicino Oriente antico tra il II millennio a.C. e l'età partico-sasanide.

Numerosi ricercatori provenienti da diversi paesi (Italia, Francia, Inghilterra, Polonia, Canada, Ungheria, ecc.) hanno scelto di partecipare al call for papers proposto dal Comitato Organizzativo. L'alto numero delle richieste ci ha obbligato a compiere una selezione tra i numerosi contributi pervenutici e ad aprire una più ampia sessione poster. Il livello degli interventi che hanno avuto luogo durante i due giorni del workshop è stato giudicato in maniera positiva dai professori presenti, dagli uditori e dai partecipanti e ci ha incoraggiato a pubblicarne gli atti il più rapidamente possibile. Questo obiettivo è stato raggiunto dopo solo un anno e mezzo. Sappiamo, infatti, che i giovani studiosi hanno bisogno di pubblicazioni per crescere e migliorare la propria carriera accademica e siamo coscienti del fatto che generalmente i primi lavori costituiscono un punto di riferimento importante per il proprio percorso di ricerca. Siamo dunque felici e orgogliosi di aver potuto dare ai partecipanti l'opportunità di presentare al pubblico accademico i loro primi e proficui lavori.

Preface

Gli interventi raccolti in questo volume, suddivisi conformemente alle diverse sessioni del workshop, mostrano approcci innovativi circa l'archeologia, la storia e la filologia del Vicino Oriente antico. L'integrazione di diverse metodologie e discipline ha permesso infatti di indagare in maniera più esaustiva la complessità dei contatti materiali e culturali nel Vicino Oriente tra il II millennio a.C. e il l'età partico-sasanide.

Gli editori desiderano ringraziare il Centro Scavi e Ricerche Archeologiche di Torino per il Medio Oriente e l'Asia (CRAST) e l'Università degli Studi di Torino (UniTo) per i contributi che hanno permesso questa pubblicazione e la Fondazione Fondo Ricerca e Talenti per il supporto finanziario per il workshop. Si ringrazia inoltre il Comitato Scientifico – formato dai proff. S. de Martino, C. Lippolis e V. Messina – per il lavoro e il prezioso aiuto nella revisione dei testi. Siamo grati inoltre ai presidenti delle tre sessioni del workshop che hanno introdotto e stimolato il dibattito: la prof.ssa C. Mora (Università di Pavia) per la parte del II millennio a.C., il prof. L. Peyronel (IULM – Milano), per la sessione del I millennio a.C. e il prof. Leriche (CNRs, Parigi), per il periodo post-assiro. Desideriamo in aggiunta ringraziare il dott. C. Greco, Direttore del Museo Egizio di Torino, che ha gentilmente acconsentito ad aprire la prima giornata del workshop e, infine, tutti i partecipanti che hanno contribuito alla buona riuscita di questo workshop con i loro interessanti lavori.

Il Comitato Organizzativo

Enrico Foietta, Carolina Ferrandi, Eleonora Quirico, Francesca Giusto, Mattia Mortarini, Jacopo Bruno & Lorenzo Somma

INDEX

Session 1.

THE INTERNATIONAL PERIOD: COURT GIFTS, IMPORTATIONS, TRADES AND CRAFTS IN THE 2ND MILLENNIUM BC

VIOLETTA CORDANI, Exchange and Use of Iron in the Old Assyrian Period. The Anatolian Perspective	p.	3
MARCO DE PIETRI, Relationships between Egypt and Karkemish during the 2 nd Millennium BC: A Brief Overview	»	9
ANGELO DI MICHELE, From Babylonia to Assyria: Reflections and Considerations on the Nabû Temples.	»	16
FEDERICO MANUELLI, What Remains when Contact Breaks Off? Survival of Knowledge and Techniques in the Material Culture of the Peripheral Regions of the Hittite Empire after Its Dissolution.	»	26
VALENTINA OSELINI, Traces of Elamite and Mittani Culture in the Hamrin Basin: The Case of Fine Pottery in the Kassite Contexts of Tell Yelkhi	»	36
GIULIA SCAZZOSI, Interconnections and Trade in Late 2 nd Millennium BC Mesopotamian Temples: The Case of the Kassite Temple of Enlil at Nippur	»	46
BERNHARD SCHNEIDER, Remarks on the Archaeology of the Kassite Ekur of Nippur, Including Some Lapis Lazuli Findings in Context	»	54
GIULIA TUCCI, New Kingdom and Southern Levant: Egyptian Finds in Coastal Sites during the Late Bronze Age.	»	63

Session 2.

TRADES, DEPORTATIONS, MOVEMENTS OF PEOPLE AND OBJECTS IN THE 1ST MILLENNIUM BC

LUISA BONADIES, Cultural Exchange in the Stone Vessels Production of the First Millennium B.C.E.	»	73
PETRA M. CREAMER, A Comparison of Resinous Artifacts in the Ancient Near East	»	83
LUIGI MALATACCA, Movements of Fibers, Dyes and Textiles in First Millennium BC Babylonia (Neo- and Late-Babylonian Periods).	»	91
SURESHKUMAR MUTHUKUMARAN, Tree Cotton (<i>G. arboreum</i>) in Babylonia.	»	98

Session 3.

CULTURAL CONTACTS, CIRCULATION OF IDEAS, TRADES AND INNOVATIONS IN THE ACHAEMENID, SELEUCID AND PARTHIAN PERIODS

ILARIA BUCCI, New Religious Images from Hatra. Unpublished Pictorial Graffiti from the Iraq Museum, Baghdad	»	109
SÉGOLÈNE DE PONTBRIAND, Europos-Dura at the Convergence of Hellenistic, Parthian and Roman Architectures: The case of Governor Lysias' Residence	»	118
MAHDOKHT FARJAMIRAD, Burial Customs during the Seleuco-Parthian Period of Iran; Greek or Local Culture?	»	129
ALEKSANDRA KUBIAK, Some Reflections on the Continuity of Mesopotamian Religious Traditions in Partho-Roman Hatra and Palmyra	»	138
ENRICO MARCATO, <i>Nny dy htr'</i> : The Characterisation of the Goddess Nanaya in the Pantheon of Hatra, as to Epigraphic Evidence.	»	141
GIULIO MARESCA, Notes on Eastern Iran during Post-Achaemenid, Parthian and Sasanian Period: A Preliminary Reappraisal of the ISMEO Excavations at Qal'a-ye Tepe and Qal'a-ye Sam in Sistan	»	148
ALESSANDRO POGGIO, Impressions of Power: 'Greco-Persian' Seals in Perspective	»	157
FABIANA RAIANO, Pottery from Kojtepa: Joint Uzbek-Italian Archaeological Mission in Samarkand Area	»	164
MAJA RZEPLIŃSKA, Terracotta Riders - a Powerful Image That Lasted through Dynasties	»	170

GIULIO MARESCA

NOTES ON EASTERN IRAN DURING POST-ACHAEMENID, PARTHIAN AND SASANIAN PERIOD: A PRELIMINARY REAPPRAISAL OF THE ISMEO EXCAVATIONS AT QAL‘A-YE TEPE AND QAL‘A-YE SAM IN SISTAN

ABSTRACT

In the frame of the archaeological researches carried out between the 60s and the 70s of the last century in Iranian Sistan by an Italian team of IsMEO (Istituto Italiano per il Medio ed Estremo Oriente) headed by Umberto Scerrato, some trenches were excavated at the fortified citadels of Qal‘a-ye Tepe and Qal‘a-ye Sam in order to obtain data to be compared with the information which, during those years, the same team was gathering at the nearby Achaemenid site of Dahāne-ye Gholāmān. The ongoing reappraisal of the results from those still unpublished archaeological activities (to be meant as a part of “Archaeo.Pro. Di.Mu.S: Archaeological Project Digital and Multimedia Sistan”, housed at the Università degli Studi di Napoli “L’Orientale” and supervised by Prof. Bruno Genito) is centred on the re-examination and digital reorganisation of the extant documental archive concerning those two sites and on the study of the ceramic assemblage therein recovered.

KEYWORDS

Archaeology, Iranian Sistan, Qal‘a-ye Sam, Qal‘a-ye Tepe, IsMEO

In the early summer of 1959, Giuseppe Tucci, Co-founder and President of the IsMEO (Istituto per il Medio ed Estremo Oriente) left for Asia to supervise IsMEO excavations in Pakistan and Afghanistan. While he was in Asia, in the autumn of 1959, he carried out a survey¹ in the eastern Iranian region of Sistan², initiating two decades of Italian field activities in that area (1959-1978). A comprehensive program of archaeological investigations in Sistan³ was conceived and planned for the following months. A first, preliminary archaeological mission headed by Giorgio Gullini⁴ and coordinated on the field by Umberto Scerrato left for Sistan after a few weeks, between October and December 1960, in order to continue the preliminary survey of the most outstanding archaeological sites previously detected and to set out in Zabul the

today, together with the southern region of Baluchistan, one of the widest provinces (*ostān*) of the Islamic Republic of Iran: *Sistān va Baluċestān*. From a morphological point of view, it represents the westernmost sector, encompassed within the boundaries of the Islamic Republic of Iran, of the lacustrine system (today partially interested by artificial flooding) forming the Hamun Lake, whose eastern portion is instead encompassed within the Afghan province of Nimruz. That lacustrine basin, however, represents only the terminal segment of a wider and more complex endorheic hydrographic system, located between eastern Iran and south-western Afghanistan, having an extension wider than 400x200 kilometres (JUX, KEMPF 1983, 7) and named Sistan Basin (or Hilmand Basin, after its main tributary river). The fragile ecological balance of the entire Basin is totally dependent from the hydrology of the Hilmand River itself, for this reason considered as Sistan’s “life-line” (FAIRSERVIS 1961, 13), whose course acted in History and still acts today as the “umbilical cord” for all living species in the region, man included.

³ Between the end of the 50s and the beginnings of the 60s, at the time of the first activities carried out by the IsMEO, historical and archaeological information about ancient Sistan was somewhat scanty. A few references to the area could be found only in historical and geographical works written by Muslim authors during the first centuries of the Islamic period (BOSWORTH 1968, 2000, 2004; SAJJADI 2001) and in the reports written by some Officials of the British Army between the end of 19th and the beginnings of the 20th century (YATE 1900; SYKES 1902, Chaps. 31-33; TATE 1910-12). Systematic archaeological exploration of western Sistan, instead, started in 1916 with the survey carried out by Sir Aurel Stein at the end of his third travel to Central Asia (STEIN 1928, 902-979). A few years later, Ernst Herzfeld carried out some archaeological prospections in the area (HERZFELD 1926, 266-272) and subsequently concentrated with particular emphasis on the site of Kuh-e Khwāje (HERZFELD 1932), which from that moment onwards was considered the most outstanding example of Parthian art and architecture in the region (HERZFELD 1935, 58-74, pls. VII-X; 1941, 291-297, 301-302, pls. XCVI-CIV). Modern archaeological interest towards the easternmost, Afghan portion of Sistan started only some decades later, in the autumn of 1936, thanks to the activities by DAFA (Délégation Archéologique Française en Afghanistan) directed by Joseph Hackin and Roman Ghirshman. Of particular importance were the soundings carried out at Nad-i Ali (GHIRSHMAN 1939, 1959), about six kilometres north of the present-day Zaranj. In September 1950 and in January-February 1951, instead, the Department of Anthropology of the New York American Museum financed two expeditions directed by the American anthropologist Walter A. Fairservis Jr., which succeeded in carrying out a quite comprehensive archaeological survey of the Afghan Sistan. The final results of that surveys were published about ten years later (FAIRSERVIS 1961).

⁴ Director of the “Centro Scavi e Ricerche in Asia dell’IsMEO e di Torino” (the Turin branch of the IsMEO Excavation Centre), the Institute from which, in 1963, Prof. Gullini promoted, in collaboration with the University of Turin, the Municipality of Turin and the Province of Turin, the constitution of the “Centro Ricerche Archeologiche e Scavi di Torino per il Medio Oriente e l’Asia”.

¹ Briefly reported in the IsMEO Journal (ANONYMOUS 1959).

² The Iranian region of Sistan, situated along the border between Afghanistan and the Islamic Republic of Iran, constitutes

headquarter of the Italian excavation activities⁵. The following year, in 1961, again between October and December, the Italian team started the first archaeological campaign⁶. Giorgio Gullini carried out stratigraphic excavations at Kuh-e Khwāje⁷, investigating the entrance and the southern and eastern sectors of the courtyard in the so-called Ghāga Šahr complex. The results of the archaeological excavations and of the systematic survey carried out in other areas of the site (i.e. the walls, the cemetery and the entire area around the Ghāga Šahr complex as well as the area of the so-called *Čehel Doxtarān* - lit. "Forty Girls" - complex, a stronghold with quadrangular layout on the south-western edge of the site) were published by Gullini a few years later⁸.

In the same weeks of 1961, also Umberto Scerrato carried out archaeological activities in Sistan, excavating some trenches at the fortified citadel of Qal'a-ye Tepe, in the area of the upper Posht-ab.

Anyway, from 1962 the scientific interest of the IsMEO focused principally on the Achaemenid site of Dahāne-ye Gholāmān, at about thirty kilometres south-east from the city of Zabul, where Umberto Scerrato directed several seasons (1962-1965 and 1975-1977) of excavations and restoration activities⁹.

Nevertheless, complementary to the main archaeological activities at Dahāne-ye Gholāmān, IsMEO continued explorations at Qal'a-ye Tepe and, in addition, carried out some trenches at the fortified citadel of Qal'a-ye Sam, with the aim to investigate the development both of the settlement pattern and of the ceramic production in Sistan during later phases of the historical period. The results of the soundings carried out at the latter two sites, unfortunately, were not published in detail. They were just hinted at in an article regarding building QN3 at Dahāne-ye Gholāmān¹⁰, in a communication written by Scerrato for the Dante Alighieri Society in Florence¹¹ and in the brief report about the IsMEO archaeological activities in Sistan read during the Fifth International Congress on Iranian Art and Archaeology held at Tehran in April 1968¹². Moreover, while some other archaeological activities at the sites of Kuh-e Khwāje and Dahāne-ye Gholāmān were carried out in the last decades¹³, it seems that Qal'a-ye Tepe and Qal'a-ye Sam remained quite neglected by field activities after the IsMEO excavations.

The present paper aims at illustrating some preliminary results of an ongoing reappraisal of the IsMEO excavations at Qal'a-ye Tepe and Qal'a-ye Sam, carried out in the frame of Archaeo.Pro.Di.Mu.S. (Archaeological Project Digital and Multimedia Sistan), a scientific project housed at the University of Naples "L'Orientale" (UNO) under the scientific supervision by Prof. Bruno Genito (Chair of Iranian Archaeology and Art History), focused on the implementation of a WebGIS platform (Fig. 1) to store, organize and manage the photographic and documental archive

produced by the IsMEO archaeological activities at Dahāne-ye Gholāmān, Qal'a-ye Tepe and Qal'a-ye Sam¹⁴. Between 2003 and 2006, on the basis of an agreement between IsIAO (Istituto Italiano per l'Africa e l'Oriente, the Institute into which IsMEO had merged) and UNO, the entire photographic, graphic and textual archive of the IsMEO archaeological missions at Dahāne-ye Gholāmān, Qal'a-ye Tepe and Qal'a-ye Sam was progressively transferred to CISA (Centro Interdipartimentale di Servizi di Archeologia) at UNO in order to be archived in a digital format¹⁵.

⁵ ANONYMOUS 1961a, 82; SCERRATO 1962, 189 n. 1.

⁶ ANONYMOUS 1961b, 290; SCERRATO 1962, 189 n. 1.

⁷ Sir Aurel Stein had already carried out some archaeological activities the site (STEIN 1928, 909-925, figs. 455-468, figs. 471-475), providing a general topographic description accompanied by a sketch map (STEIN 1928, pl. 52), a detailed account and a plan of its visible structures (STEIN 1928, 909-913, 921-923, pl. 53) and of its mural paintings (STEIN 1928, 913-921, pl. 54), together with a discussion about pottery fragments collected on the field (STEIN 1928, 910 n. 4, 911 n. 5; pl. CXV Gha.02, Gha.07, Gha.08, Gha.010+012). Some years later, also the scientific interest of Ernst Herzfeld was particularly attracted by the site of Kuh-e Khwāje (see note no. 3).

⁸ The volume by Gullini was issued in 1964 (GULLINI 1964). In 1962, however, Umberto Scerrato and Gherardo Gnoli excavated another trench at Kuh-e Khwāje, obtaining fundamental results to put in discussion the chronology of the site proposed by Gullini and, in particular, the chronological attribution to the Achaemenid period of the ceramic class labelled as "Dipinta Storica Sistani" (SCERRATO 1966a, 466-67; 1966b, 30; 1970, 137; 1972, 203; TUCCI 1966, 144-145).

⁹ SCERRATO 1962, 1966a, 1966b, 1966c, 1966d, 1970, 1972, 1974, 1979; MARIANI 1977, 1979. The importance of the discovery was also underlined with reference to the history of the ancient Iranian religion (GNOLI 1966, 1967).

¹⁰ SCERRATO 1966a, 466-467.

¹¹ *Idem* 1970, 136-139.

¹² *Idem* 1972, 202-203. Some additional information was also recently provided by GENITO (2010, 104-105).

¹³ ALAEI MOGHADAM 2015; MEHR AFARIN, MOUSAVI HAJI, BANI JAMALI 2011; MOHAMMADKHANI 2012, 1389/2010; GHANIMATI 2013; 2000; SAJJADI 2007; 2004, 248-249; SAJJADI, CASANOVA 2006, 357; SAJJADI, SABER-MOGHADDAM 2004; MOUSAVI 1999; SAJJADI 1998, 1997.

¹⁴ GENITO 2014; MARESCA 2014; COCCA *et alii* 2016; GENITO *et alii* 2013.

¹⁵ As far as Qal'a-ye Tepe and Qal'a-ye Sam are concerned, the documental archive presently at disposal is represented by a few dozens of both handwritten and typewritten working notes by Scerrato; by an inventory list (232 entries) of finds from the soundings carried out at Qal'a-ye Sam; by forty-one photographic films, sixteen excavations drawings and about forty drawings of finds from Qal'a-ye Tepe; by ninety-six photographic films, five excavations drawings and about two-hundred drawings of finds from Qal'a-ye Sam. The archive is completed by dozens of photographs printed by Scerrato from the original films during the years and by dozens of slides probably taken in order to be shown by Scerrato during conferences, academic lessons etc. (MARESCA 2014).

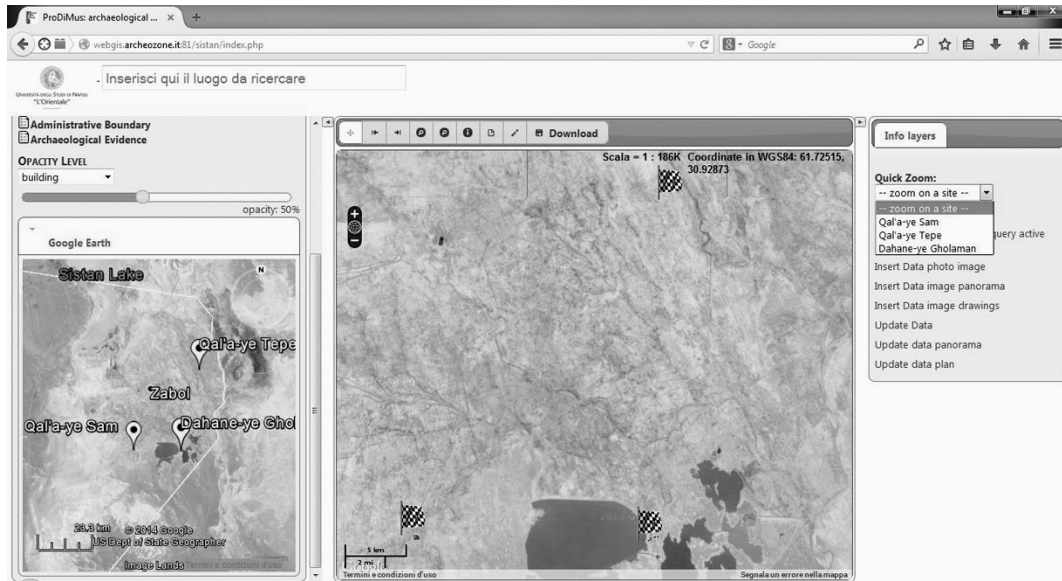


Fig. 1 - Flags and pinpoints indicating the sites of Dahāne-ye Gholāmān, Qal'a-ye Tepe and Qal'a-ye Sam as shown through the Archaeo.Pro.Di.Mu.S. WebGIS Interface.

The fortified citadel of Qal'a-ye Tepe¹⁶ is located in the upper Posht-ab area, at about fifteen kilometres north-east of the city of Zabol, in the vicinity of the village of Kazemabad and near the ruins of the Islamic sanctuary known as Bibi Dust. Between 1961 and 1962, twelve soundings were carried out by Umberto Scerrato in order to investigate the development of its fortification system, characterised by a double curtain wall (Figs. 2 and 3). Excavations made it possible to detect at least three phases in the life of the citadel (each one divided in several sub-phases), dating back to a very wide time span between the 3rd century BC and the 15th century AD. A fourth and more ancient phase (probably to be dated between the late Seleucid and the early Parthian period) was very partially detected by the excavator only in some trenches but, unfortunately, the high level of the aquifer (and also the necessity to increase the logistic efforts towards the important discoveries in the meantime made at Dahāne-ye Gholāmān) prevented further deepening in the excavations.

Located at about twenty-seven kilometres south-west of Zabol, towards the western limit of the present-day Hilmand delta, in the vicinity of the Sekuhe village, the citadel of Qal'a-ye Sam¹⁷ (Figs. 4 and 5), whose ancient name remains unknown, was founded on the top of a slightly elevated alluvial deposit. The perimeter of the walls surrounding the citadel has a sub-quadrangular shape, with a blunted north-eastern edge, following both the natural configuration of the terrain and the course of an ancient canal, which was still partially in use at the time of the excavations by the IsMEO team. A monumental gateway flanked by two rounded tower-like structures gave access into

the citadel on its eastern side by means of a street having an ENE-WSW orientation. After a brief survey in 1960, the IsMEO Archaeological Mission carried out some trenches in 1964, together with the drawing of a preliminary plan including both the structures brought into light by the excavations and all the other structures visible inside the perimeter of the citadel¹⁸. According to the extant information, the excavations discovered structural remains pertaining to at least two different chronological phases (each of them divided in several sub-phases). While the first and more recent phase was dated by Scerrato to a time span between the late Parthian and the Sasanian period, the second one was dated to the early Parthian period. Moreover, a third and more ancient phase

¹⁶ The citadel of Qal'a-ye Tepe had already been visited by Stein, who collected a corpus of glazed ceramic fragments belonging to the Islamic Period and ribbed ceramic fragments dated from the Sasanian to the proto-Islamic Period (STEIN 1928, 936, 939; pl. CXV Gh.Ta.03, Gh.Ta.05, Gh.Ta.08). The site had been also briefly reported by FAIRSERVIS (1961, 39-40, fig. 8 no. 10).

¹⁷ The site had been already reported by other scholars (TATE 1910-12, 238; FAIRSERVIS 1961, 39, fig. 8 no. 6). Some further information was also provided by Gullini, who cited the site as "Seh Kuhe" (after the name of the nearby village) and published a sketch map and some photographs (GULLINI 1964, 303-304, 395-396 figs. no. 231-235, 433 n. 74,).

¹⁸ The layout of many structures at Qal'a-ye Sam - as well as at Dahāne-ye Gholāmān (SCERRATO 1962, 186) - were detectable on the ground even before the first excavations, thanks to characteristic saline outcrops leaving on the terrain some whitish and well-defined traces in correspondence of the old buried walls.

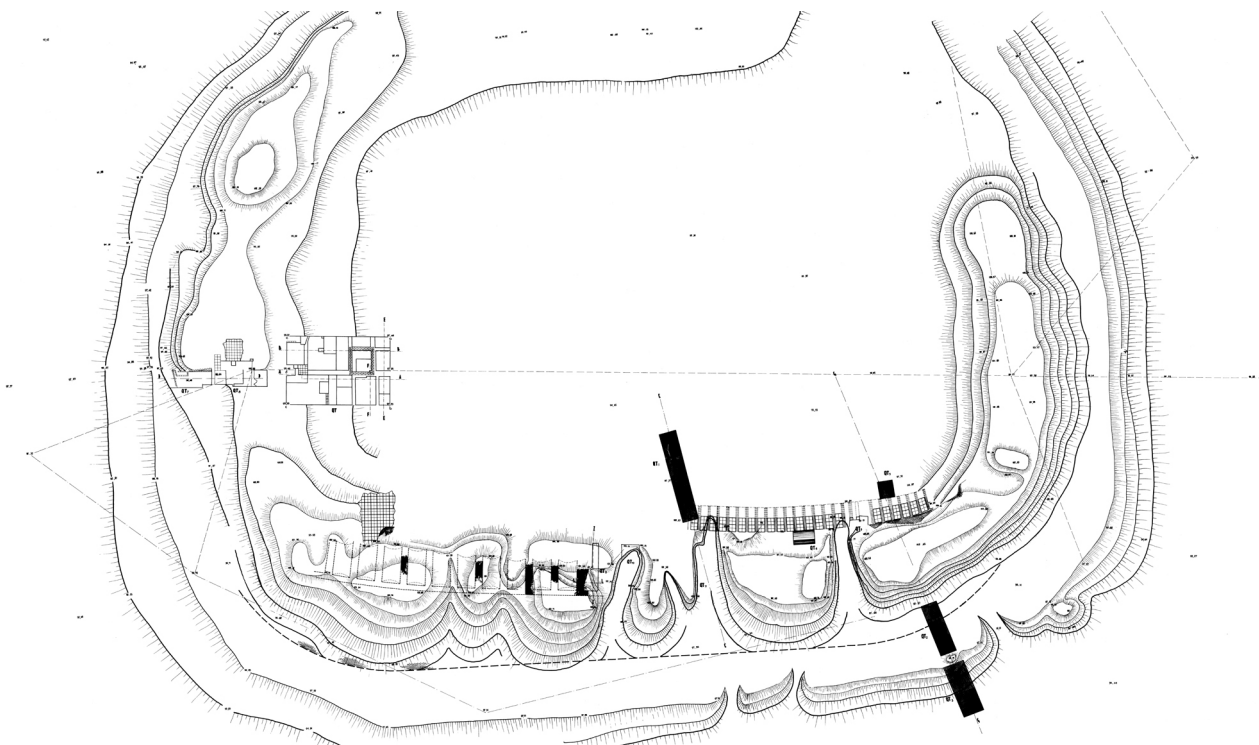


Fig. 2 - Detail of the plan indicating the areas excavated at Qal'a-ye Tepe in 1961 and 1962 (IsMEO/IsIAO drawings archive; inventory no. 8655). Not to scale.



Fig. 3 - The walls of Qal'a-ye Tepe as seen from the northern part of the surrounding plain (IsMEO/IsIAO photographic archive; inventory no. 1094/2).

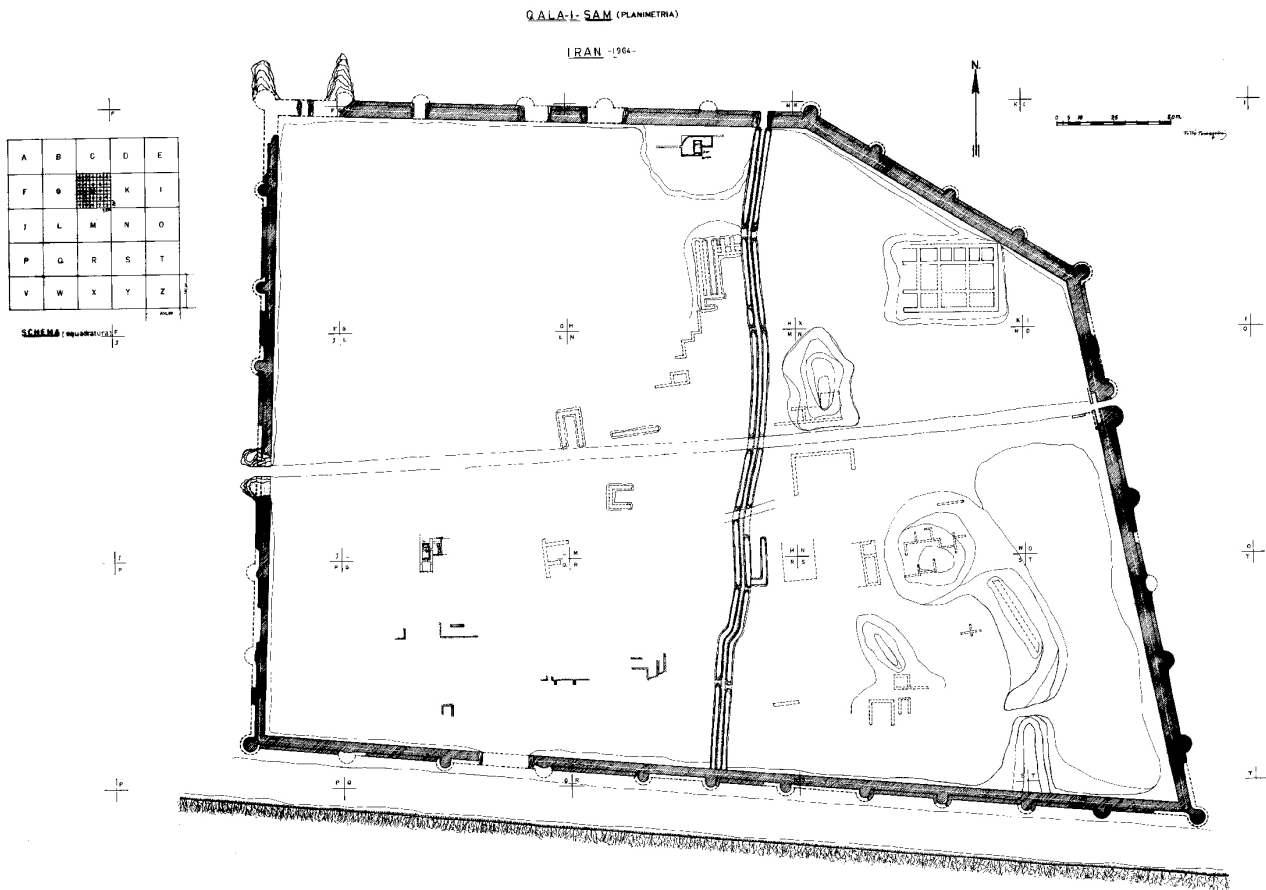


Fig. 4 - General plan of Qal'a-ye Sam drawn by Mr. Tullio Tamagnini in 1964 (IsMEO/IsIAO drawings archive; inventory no. 1330). Not to scale.



Fig. 5 - Qal'a-ye Sam: the north-eastern walls and the eastern monumental gateway as seen from inside the citadel (IsMEO/IsIAO photographic archive; inventory no. 3129/8).

was detected and partially investigated only in one of the trenches, where it was tentatively dated to the late-Seleucid period. Unfortunately, further excavations were not carried out in the following years to confirm such a chronological attribution¹⁹.

The corpus of ceramics coming from the IsMEO excavations at Qal'a-ye Tepe and Qal'a-ye Sam has never been published in a complete way²⁰. The assemblage presently at disposal is represented by 1271 ceramic fragments²¹ from the soundings excavated at Qal'a-ye Tepe and by about one hundred and fifty ceramic fragments from the survey and from the two soundings carried out at Qal'a-ye Sam. These fragments, selected from among the whole corpus of excavated materials (or materials collected during preliminary surveys)²² were transferred to Italy²³ in the late 60's of the last century, on the basis of an agreement between IsMEO and the former Imperial Service for the Antiquities of Iran. While some objects were stored at MNAOr (Museo Nazionale d'Arte Orientale) - presently MNAO (Museo Nazionale d'Arte Orientale "Giuseppe Tucci") - in Rome, to be put on display, the great bulk of the fragments were kept at the Centro Scavi of the IsMEO (later IsIAO), in Rome. After IsIAO ceased its glorious activity between the end of 2011 and the beginning of 2012, the whole corpus of ceramic fragments from Qal'a-ye Sam and all the "diagnostic" fragments²⁴ from Dahāne-ye Gholāmān previously stored at Centro Scavi were transferred to CISA at UNO, in Naples. The "un-diagnostic" fragments from Dahāne-ye Gholāmān as well as the entire corpus of ceramic fragments from Qal'a-ye Tepe were instead stored at MNAO's warehouse in Rome.

The study of these materials, started in 2005 in the frame of the activities carried out by the Chair of Iranian Archaeology and Art History at UNO²⁵, is still ongoing in the frame of Archaeo.Pro.Di.Mu.S., with a special attention to archaeometric issues, thanks to the collaboration between the Chair of Iranian Archaeology and Art History at UNO and a team of scholars from DiSTAR (Dipartimento di Scienze della Terra, dell'Ambiente e delle Risorse) at the University of Naples "Federico II", headed by Prof. Vincenzo Morra.

Covering a very wide time span approximately between the 3rd century BC and the 15th century AD, the pottery assemblage from Qal'a-ye Tepe²⁶ is represented by 274 glazed and 988 unglazed ceramic fragments. Among the first group, examples of slip painted, underglazed painted, graffita, graffita and splashed, splashed, monochrome green, monochrome turquoise, monochrome black and monochrome dark brown wares are attested in seven different ceramic fabrics. Macroscopic analyses on the four unglazed pottery classes (common ware, ribbed ware, burnished ware and "Dipinta Storica Sistana"²⁷) made it possible, instead, to single out fifteen different ceramic fabrics.

The most characteristic class of ceramics attested in the assemblage from Qal'a-ye Sam²⁸ is instead

the "Dipinta Storica Sistana", particularly significant during phase II and to be dated back to the early-Parthian or even late-Seleucid period, by virtue of its stratigraphic connection with several ceramic fragments bearing Greek letters incised and with some *ostraka* with inscriptions in cursive Greek²⁹. In addition, fragments of this ware were found at Dahāne-ye Gholāmān in some layers to be related to a very late, post-Achaemenid chronological phase of the site³⁰.

Preliminary mineralogical and petrographic analyses on the assemblage testify that although technological features of the ceramic production changed significantly over time, similar raw materials, widely available in the area, were utilised for a long period³¹, suggesting long-lasting close relationships between settlements in Sistan and their territorial and environmental context.

¹⁹ In 1973 Scerrato carried out a brief survey, probably in order to plan new soundings (ANONYMOUS 1973, 418), but the excavations were never resumed.

²⁰ Scerrato just gave some hints to it (SCERRATO 1966a, 466-467; 1970, 137-139; 1972, 202-203), and in the past decades other information about the pottery from Qal'a-ye Sam and Qal'a-ye Tepe was provided in a general work on the ceramics from the Parthian Period in Iran (HAERINCK 1983, 214-222, figs. 36-37, pl. XIV nos. 1-6), in a review-article of the latter monograph (VOGELANG 1985, 167-169), in the catalogue of an exhibition held at the Museo Nazionale d'Arte Orientale in Rome (D'AMORE 1999) and in a preliminary article by Genito, who provided also some pictures of ceramic fragments from both sites (GENITO 2010, 104 no. 3, 109 fig. 5, 110 fig. 7).

²¹ Some of them match each other, thus the actual total number of ceramic fragments from Qal'a-ye Tepe is 1262.

²² Unfortunately, it has not been possible to determine with precision the criteria according to which such a division was made. Of course, that decision by Scerrato was firmly guided by scientific reasons but it was also probably affected by some logistic and bureaucratic issues.

²³ Together with pottery fragments from Dahāne-ye Gholāmān and other artefacts from the three sites, as some examples of choroplastics, metal and stone objects etc.

²⁴ Already selected in 2006 from the extant fragments (MARESCA 2008, 107 n. 59; 2014, 65 n. 8).

²⁵ MARESCA 2010; OLIMPO 2009; MARESCA 2008, 100-139.

²⁶ OLIMPO 2009; MARESCA 2008, 123-130, pls. 11-14.

²⁷ This ceramic class is characterised by a peculiar painted decoration in red, wine-red, ochre, brown and dark brown, sometimes limited to the rim but more often covering also the shoulder or the upper portion of the vessel. Almost always monochromatic, the decoration consists mostly of geometric patterns but also, quite rarely, of stylised phytomorphic motifs (MARESCA 2016).

²⁸ MARESCA 2008, 135-139; 2016.

²⁹ These fragments were published only in a preliminary way (PUGLIESE CARRATELLI 1966, 34-35, figs. 6-10). One of them, in particular, in a quite good state of preservation, carrying an inscription consisting of thirteen lines, today stored at the Museo Nazionale d'Arte Orientale in Rome (D'AMORE 1999, 80 no. 100, pl. XI cat. 100), was dated to the middle 3rd century BC (PUGLIESE CARRATELLI 1966, 34, fig. 6).

³⁰ Probably when the city had already been abandoned by its inhabitants (SCERRATO 1962, 188 no. X; 1966, 464-465, n. 20; 1972, 203).

³¹ MARESCA 2016.

BIBLIOGRAPHY

- ALAEI MOGHADAM, J.
2015 - "Koohe Khajeh Based on Archaeology (Survey and Study of Ancient Structures Existing in Koohe Khajeh of Sistan)", *International Journal of Management and Humanity Sciences* 4(1), 4355-4367.
<http://ijmhsjournal.com/wp-content/uploads/2015/04/4355-4367.pdf>
- ANONYMOUS
1959 - "IsMEO Activities", *East and West* 10, 234.
1961a - "IsMEO Activities", *East and West* 12, 82-83.
1961b - "IsMEO Activities", *East and West* 12, 290.
1973 - "IsMEO Activities", *East and West* 23, 418-420.
- BOSWORTH, C.E.
1968 - *Sīstān under the Arabs, from the Islamic Conquest to the Rise of the Saffārids (30-250/651-864)*, Roma.
2000 - "Sistan and its Local Histories", *Iranian Studies* 33, 31-43.
2004 - "Helmand River iii. In the Medieval Period", in E. YARSHATER (ed.), *Encyclopædia Iranica* XII, 172-173.
- COCCA, E. - GENITO, A. - GENITO, B. - MARESCA, G.
2016 - "A WebGIS about the Italian Archaeological Activities in Sistan, Iran (60s-70s of the XXth century): Archaeo.Pro.Di.Mu.S.", in R.A. STUCKY *et alii* (eds.), *Proceedings of the 9th International Congress on the Archaeology of the Ancient Near East (9. ICAANE), Basel University 9th-13th June 2014*, Vol. 3, Wiesbaden, 1453-1465.
- D'AMORE, P.
1999 - "La ceramica achemenide e partico-sasanide dell'Iran orientale", in P. D'AMORE (ed.), *L'argilla e il Tornio. Tecniche e tipologie vascolari iraniche dal Periodo del Ferro all'età dell'Impero Sasanide*, Roma, 77-80.
- FAIRSERVIS, W.A.
1961 - *Archaeological studies in the Seistan basin of Southwestern Afghanistan and Eastern Iran* (Anthropological Papers of the American Museum of Natural History 48-1), New York.
- GENITO, B.
2010 - "From the Achaemenids to the Sasanians. Dāhān-e Gholāmān, Qal'a-ye Sam, Qal'a-ye Tapa: Archaeology, Settlement and Territory in Sīstān (Iran)", in P. CALLIERI, L. COLLIVA (eds.), *South Asian Archaeology 2007. Proceedings of the 19th Meeting of the European Association of South Asian Archaeology in Ravenna, Italy, July 2007* (BAR International Series 2133), Oxford, Vol. II, 101-110.
- GENITO, B. (ed.)
2014 - *Digital Archaeology from the Iranian Plateau (1962-1977). Collected Papers on the occasion of the 10th anniversary of the demise of Umberto Scerrato* (Università degli Studi di Napoli "L'Orientale", Dipartimento Asia, Africa e Mediterraneo, Series Minor LXXX), Napoli.
- GENITO, B. - MARESCA, G. - COCCA, E. - FRANZESE, F.
2013 - "Preliminary Steps Towards a WebGIS about the Italian Archaeological Activities at Dahāne-ye Gholāmān (Sistan, Iran): Archaeo.Pro.Di.Mu.S.", *Newsletter di Archeologia CISA* 4, 183-208.
http://www.unior.it/userfiles/workarea_231/file/NL4/Articoli/04_Genito-Maresca%20et%20alii.pdf
- GHANIMATI, S.
2000 - "New Perspectives on the Chronological and Functional Horizons of Kuh-e Khwaja in Sistan", *Iran* 38, 137-150.
2013 - "Kuh-e Khwaja and the religious architecture of Sasanian Iran", in D.T. POTTS (ed.), *The Oxford Handbook of Ancient Iran*, Oxford, 878-908.
- GHIRSHMAN, R.
1939 - "Recherches préhistoriques en Afghanistan. Fouilles de Nad-i Ali dans le Seistan Afghan", *Revue des Arts Asiatiques* 13, 10-12.
1959 - "Recherches préhistoriques en Afghanistan. Fouilles de Nad-i Ali dans le Seistan Afghan", in AA.VV., *Diverses recherches archéologiques en Afghanistan (1933-1940)* (Mémoires de la Mission Archéologique Française en Afghanistan VIII), Paris, 23-48.
- GNOLI, G.
1966 - "Intervento sulla relazione del Prof. Scerrato: L'edificio sacro di Dahan-i Ghulaman (Sistan)", *Atti del Convegno sul Tema: la Persia e il Mondo Greco-romano, Roma 11-14 aprile 1965* (Accademia Nazionale dei Lincei Quaderno 76), Roma, 471-476.
1967 - *Ricerche Storiche sul Sīstān antico*, Roma.
- GULLINI, G.
1964 - *Architettura iranica dagli Achemenidi ai Sasanidi. Il "Palazzo" di Kuh-i Khwagia (Seistan)*, Torino.
- HAERINCK, E.
1983 - *La céramique en Iran pendant la période parthe (ca. 250 av. J.C. à ca. 225 après J.C.): typologie, chronologie et distribution* (Iranica Antiqua Supplement II), Gent.
- HERZFELD, E.
1926 - "Reisebericht", *Zeitschrift der Deutschen Morgenländischen Gesellschaft* 80 (5 n.f.), 225-284.
1932 - "Sakastān, Geschichtliche Untersuchungen zu

Notes on Eastern Iran during Post-Achaemenid, Parthian and Sasanian Period

- den Ausgrabungen am Kūh ī Khwādja”, *Archaeologische Mitteilungen aus Iran* 4, 1-116.
1935 - *Archaeological History of Iran*, London.
1941 - *Iran in the Ancient East*, London.
- JUX, U. - KEMPF, K.
1983 - “Regional Geology of Sīstān (Southwest Afghanistan)”, in M. TOSI (ed.), *Prehistoric Sīstān*, Roma, 5-60.
- MARESCA, G.
2008 - *Insedimenti e cultura materiale nel Sistan (Iran orientale) di epoca storica, I dati delle missioni archeologiche dell’Is.M.E.O*, Dottorato di Ricerca in Archeologia (Rapporti tra Oriente ed Occidente), V Ciclo N.S., Università degli Studi di Napoli “L’Orientale”, Unpublished PhD Dissertation.
2016 - “Echoes of Regional Traditions plus Western Typological Influences: Some Notes about the Post-Achaemenid Pottery Assemblage from the Italian Excavations at Qal’a-ye Sam (Iran, Sistan)”, in R.A. STUCKY *et alii* (eds.), *Proceedings of the 9th International Congress on the Archaeology of the Ancient Near East (9. ICAANE)*, Basel University 9th-13th June 2014, Vol. 2, Wiesbaden, 753-765.
2014 - “Bytes from Ink/Ink from Bytes: the Complexity of Data from the Italian Archaeological Activities at Dahāne-ye Gholāmān, Qal’a-ye Sam and Qal’a-ye Tepe”, in B. GENITO (ed.), *Digital Archaeology from the Iranian Plateau (1962-1977). Collected papers on the occasion of the 10th anniversary of the demise of Umberto Scerrato*, Napoli, 61-71.
- MARIANI, L.
1977 - *The Operations Carried out by the Italian Restoration Mission in Sistan 1975-1976 (2534-2535). Campaign Conservation of the Mud-brick Structures in the Sacred Building N. 3 at Dahan-e Ghulaman, and the Detachment of the Fresco in the Palace at Kuh-i Khwaga*, Roma.
1979 - “Conservation Work on Building 3 at Dahan-e Ghulaman, Sistan”, in M. TADDEI (ed.), *South Asian Archaeology 1977: Papers from the Fourth International Conference of the Association of South Asian Archaeologists in Western Europe, held in the Istituto Universitario Orientale, Naples*, Vol. 2, Napoli, 737-758.
- MEHRAFARIN, R. - MOUSAVI HAJI, S.R. - BANI JAMALI, S.L.
2011 - “Archaeological Survey of Kooh-e Khajeh in Sistan”, *The International Journal of Humanities* 18(1), 43-63.
http://ejih.modares.ac.ir/article_5546_1214.html
- MOHAMMADKHANI, K.
1389 (2010) - “Barrasi-ye Bāstānšenāsāna-ye Taz’ināt-e Koḥandež-e Kuh-e K̄yāja-ye Sīstān (Naqāshihā, Gačborihā va Noquš-e Barjasta-ye Gelin)”, *Pažuhešhā-ye Bāstānšenāsi-ye Modarres* 3, 110-135.
2012 - “Une nouvelle construction monumentale achéménide à Dahaneh-e Gholaman, Sistan, Iran”, *Arta* 2012.001, 1-18.
<http://www.achemenet.com/document/2012.001-Mohammadkhani.pdf>
- MOUSAVI, S. M.
1999 - “Kuh-e Khadjeh: Un complexe religieux de l’est iranien”, *Dossiers d’Archéologie* 243, 81-84.
- OLIMPO, A.
2009 - *Qal’a-ye Tepe, Sistan, Iran: Scavo e Materiali degli Anni ’60*. Unpublished MA Thesis in “Archeologia e Storia dell’Arte Iranica”, Università degli Studi di Napoli “L’Orientale”, Napoli.
- PUGLIESE CARRATELLI, G.
1966 “Greek Inscriptions of the Middle East”, *East and West* 16, 31-36.
- SAJJADI, S.M.S.
1997 - “Dahana-ye Gōlāmān, Šahri Haḳāmaneši dar Irān I”, *Iranian Journal of Archaeology and History* 20, 57-33.
1998 - “Dahana-ye Gōlāmān, Šahri Haḳāmaneši dar Irān II”, *Iranian Journal of Archaeology and History* 21-22, 43-51.
2001 - “Southern Sistan as Seen by Muslim Geographers and Historians”, in M. TADDEI, G. DE MARCO (eds.), *South Asian Archaeology 1997: Proceedings of the Fourteenth International Conference of the European Association of South Asian Archaeologists, held in the Istituto Italiano per l’Africa e l’Oriente, Palazzo Brancaccio, Rome, 7-14 July 1997*, Vol. II, Roma, 564-578.
2004 - “Sistan and Baluchistan Project 2005/2006”, *Iran* 42, 247-250.
2007 - “Wall Painting from Dahaneh-ye Gholaman (Sistan)”, *Ancient Civilization from Scythia to Siberia* 13, 129-154.
- SAJJADI, S.M.S. - SABER-MOGHADDAM, F.
2004 - “Peintures et gravures murales découvertes à Dahan-e Gholāmān, Sīstān”, *Studia Iranica* 33(2), 285-296.
- SAJJADI, S.M.S. - CASANOVA, M.
2006 - “Sistan and Baluchistan Project 2005/2006”, *Iran* 44, 347-357.
- SCERRATO, U.
1962 - “A Probable Achaemenid Zone in Persian Sistan”, *East and West* 13, 186-197.
1966a - “L’edificio sacro di Dahan-i Ghulaman (Sistan)”, *Atti del Convegno sul Tema: la Persia e il Mondo Greco-romano, Roma 11-14 aprile 1965*, (Accademia Nazionale dei Lincei Quaderno 76), Roma, 457-477.
1966b - “Excavations at Dahan-i Ghulaman (Sistan-Iran), First Preliminary Report (1962-1963)”, *East and West* 16, 9-30.
1966c - “A Lost City of Sistan”, *The Illustrated London News* October 29th, 20-21.

Giulio Maresca

- 1966d - "Fire Temples of Sistan", *The Illustrated London News* November 5th, 26-27.
- 1970 - "La Missione Archeologica Italiana nel Sistan Persiano", *Il Veltro* 14 (1-2), 123-140.
- 1972 - "Missions Archéologiques Italiennes au Sistan", *The Memorial Volume of the V International Congress of Iranian Art and Archaeology. Tehran-Isfahan-Shiraz, 11th- 18th April 1968*, Vol. I, Tehran, 200-203.
- 1979 - "Evidence of Religious Life at Dahan-e Ghulaman, Sistan", in M. TADDEI (ed.), *South Asian Archaeology 1977: Papers from the Fourth International Conference of the Association of South Asian Archaeologists in Western Europe, held in the Istituto Universitario Orientale, Naples*, Vol. 2, Napoli, 709-735.
- STEIN, A.
1928 - *Innermost Asia. Detailed report of explorations in Central Asia, Kan-su and Eastern Īrān*, Oxford.
- SYKES, P.
1902 - *Ten thousand miles in Persia*, New York.
- TATE, G.P.
1910-12 - *Seistan. A Memoir on the History, Topography, Ruins and People of the Country*, Calcutta.
- TUCCI, G.
1966 - Review of G. GULLINI, *Architettura iranica dagli Achemenidi ai Sasanidi. Il Palazzo di Kuh-i Khwagia, Seistan*, *East and West* 16, 143-147.
- YATE, C.E.
1900 - *Khurasan and Sistan*, Edinburgh.
- VOGELSANG, W.
1985 - "Parthian-Period Pottery from Iran", *Archäologische Mitteilungen aus Iran* 18, 157-172.