

Documenting Ancient Rhodes: Archaeological Expeditions and Rhodian Antiquities

Edited by Stine Schierup



GÖSTA ENBOM MONOGRAPHS

Volume 6

Documenting Ancient Rhodes: Archaeological Expeditions and Rhodian Antiquities

**Acts of the International Colloquium
held at the National Museum of Denmark
in Copenhagen, February 16-17, 2017**

Edited by Stine Schierup

with the assistance of Sanne Hoffmann

**DOCUMENTING
ANCIENT RHODES:
ARCHAEOLOGICAL
EXPEDITIONS AND RHODIAN
ANTIQUITIES**

© Aarhus University Press
and the authors 2019

**GÖSTA ENBOM
MONOGRAPHS**

General editor:
Bodil Bundgaard Rasmussen

Editorial board:
Mark L. Lawall, John Lund,
Dyfri Williams

Published with support
from The Foundation of
Consul General Gösta Enbom

Graphic design:
Nina Grut, MDD

Printed at Narayana Press

Typeset with Stone Serif
and Stone Sans

ISBN 978 87 7124 987 3
ISSN 1904-6219

Aarhus University Press
Langelandsgade 177
DK-8200 Aarhus N

White Cross Mills
Lancaster LA1 4XS, England

70 Enterprise Drive, suite 2
Bristol, CT 06010, USA

www.unipress.dk

Front cover:
Gold pendant, National Museum
of Denmark, inv. no. 861.
Photo: John Lee, 2014.

Back cover:
Kamiros, Rhodes.
Photo: Stine Schierup, 2016.

Lindos, Rhodes.
Photo: Stine Schierup, 2016.



*Amphora attributed to the painter
Syriskos, Athens 500-470 BC,
Collection of Classical and Near
Eastern Antiquities, The National
Museum of Denmark, i.n. Chr.
VIII 320.*

Table of Contents

- 7 Rane Willerslev
Preface
- 9 Stine Schierup
Introduction
- 15 Lone Wriedt Sørensen
The Colossus of Rhodes: A Powerful Enigma
- 35 Nathan Badoud
Early Explorers of Rhodes 1342-1853
- 51 John Lund
Danish Visitors to Rhodes prior to the Carlsberg Expedition (1902-1914)
- 71 Alexandra Villing
The Archaeology of Rhodes and the British Museum: Facing the Challenges of 19th Century Excavations
- 97 Nicholas Salmon
Archives and Attribution: Reconstructing the British Museum's Excavation of Kamiros
- 113 Rosemary Jeffreys
'Crowning glory': Using Archival Material to Inform the Study of a Gilded Wreath in the British Museum
- 125 Anne Coulié
Post-Salzmänn Research: A Short Note
- 133 Christian Mazet
Rhodian Orientalizing Jewellery in 19th-Century Collecting Europe
- 145 Andrea di Rosa
From Rhodes to Rome: The Archaeological Objects Discovered by Gian Giacomo Porro in the Early 20th Century
- 159 Vassiliki Patsiada
The Archaeological Research of the 19th and Early 20th Centuries in the Ancient City of Kamiros: A Critical Reconsideration
- 177 Bodil Bundgaard Rasmussen
Helvig Kinch: A Danish Painter and Member of the Danish Expedition to Rhodes
- 201 Eriphyle Kaninia
Following the Footsteps of Karl Frederik Kinch at Vroulia in Southern Rhodes: Questions and Challenges during a Restoration Project of the Archaic Settlement by the Ephorate of Antiquities for the Dodecanese
- 217 Kristian Göransson
The Rhodian Collection at Lund University: An Introduction
- 221 Giorgos Bourogiannis
Late Geometric, Subgeometric and Archaic Pottery from Rhodes at Lund: A Fresh Look at Some Old Finds

241 Mario Iozzo
**Gifts and Purchases: Antiquities from Chalke in the
National Archaeological Museum of Florence**

253 Maria Chiara Monaco
**Gifts and Purchases: Antiquities from Rhodes in
the National Archaeological Museum of Florence**

263 Matteo d'Acunto
**Documenting Italian Excavations in the Geometric
Necropolis of Ialysos (1916-1934): Burial Contexts
and Relative and Absolute Chronologies**

281 Angeliki Giannikouri, Vasiliki Eleftheriou &
Maria Pikoula
**The Sanctuary of Athena Lindia: From its Discovery
to the Recent Interventions**

293 **Bibliographic abbreviations**

297 **Bibliography**

329 **List of authors**

Documenting Italian Excavations in the Geometric Necropolis of Ialysos (1916-1934): Burial Contexts and Relative and Absolute Chronologies

BY MATTEO D'ACUNTO



Documenting Italian Excavations in the Geometric Necropolis of Ialysos (1916-1934): Burial Contexts and Relative and Absolute Chronologies

BY MATTEO D'ACUNTO

ITALIAN EXCAVATIONS IN THE CEMETERIES OF IALYSOS

The Italian occupation of Rhodes and the Dodecanese lasted from 1912 until 1947. During this period, archaeological matters as well as Medieval monuments were at the core of a wider project, whose purpose was to make these islands the finest expression of Italian stewardship in the eyes of the international community. As usually happens with colonial enterprises, archaeologists immediately followed in the steps of the military occupation; theirs was an important task, to justify political imperialism through historical propaganda and the creation of a cultural façade. However, both the occupation of the Dodecanese and the associated archaeology were, at least in part, a more focused endeavour than other examples of Italian colonialism. The Dodecanese was truly “white”, as opposed to the “black” African possessions. Accordingly, generally speaking, it was not linked to the rhetoric of race during the age of G. Giolitti and Fascism. In the Dodecanese and in particular on Rhodes, the enormous economic and scientific efforts made by Italy resulted in extensive archaeological excavations, among other enterprises. Most excavations were soon published in the *Annuario della Scuola Archeologica Italiana di Atene*, *Clara Rhodos* and *Memorie dell'Istituto FERT*.¹ Even now, we are able to study most of these archaeological contexts thanks to these publications, with the further help of the Excavation Diaries (which are now held in the Archive of the Department of Antiquities of the Dodecanese on Rhodes), and the careful work of later Greek archaeologists to organise their finds in the Archaeological Museum of Rhodes.

In 1914 Amedeo Maiuri, who had just become Director of the Italian Archaeological Mission, chose

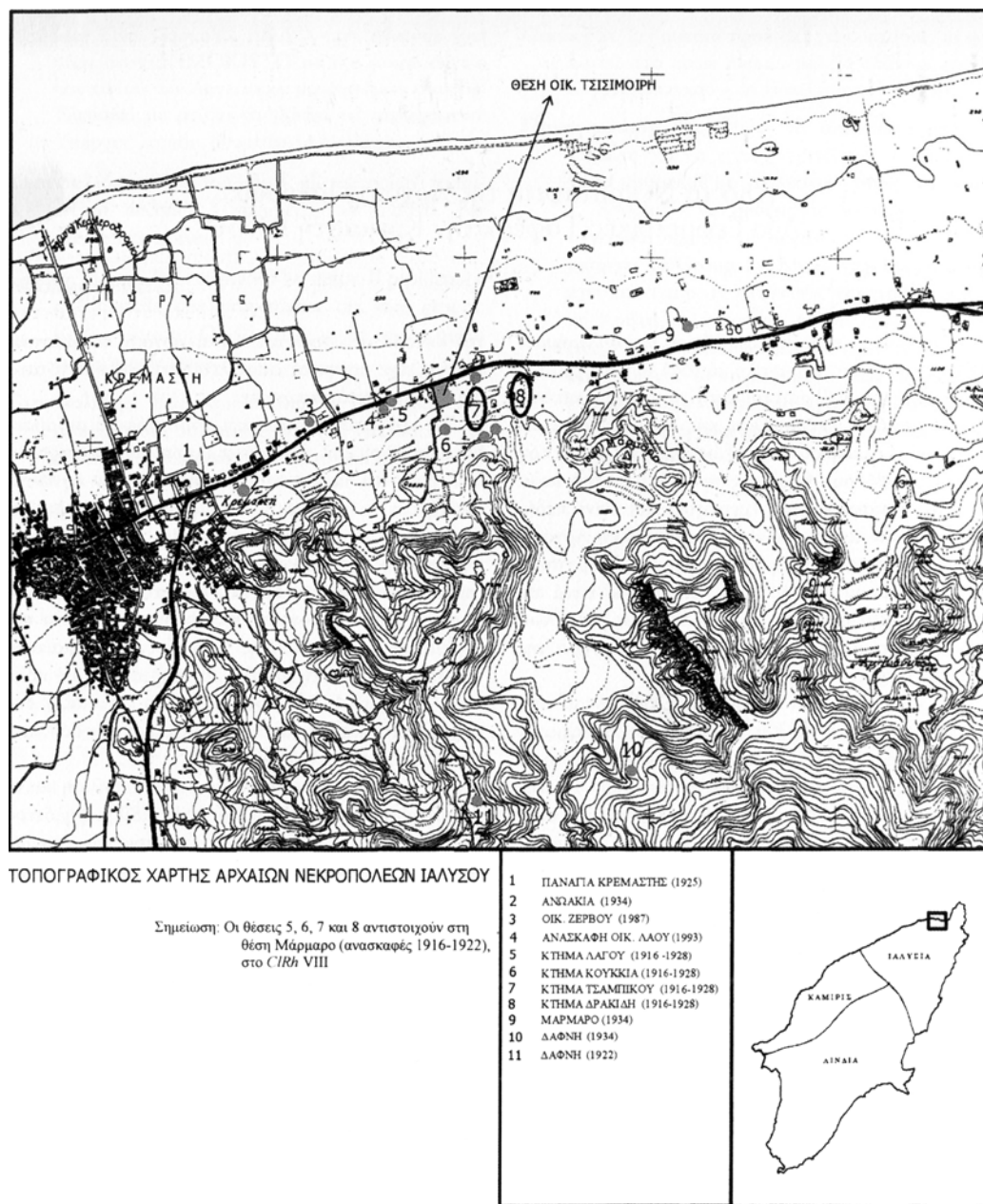
Ialysos as the focus for future Italian archaeological excavations.² This choice was suggested by the history of the former excavations on the island. On one hand, it was not politically expedient to concentrate on Lindos and its territory, because of the earlier extensive Danish investigations.³ On the other hand, it was clear to the Italians, since L. Pernier and G. G. Porro's first survey of 1913, that the archaeological condition of the cemeteries of Kamiros had been extensively damaged: illegal robbing and smuggling of artefacts off the island had already begun at the time of A. Salzmänn, and A. Biliotti's more or less controlled excavations, and had accelerated afterwards.⁴ It is undeniable that Maiuri's arrival marked a positive and definite turning point in these deleterious phenomena; this improvement was expressed in the local conservation and musealisation of the Rhodian, and indeed all Dodecanesian archaeological finds.⁵

From the point of view of field investigations, Ialysos was considered less damaged by robbers.⁶ In general, this is true, though uncontrolled and persistent digging had occurred in the preceding decades in Ialysos too, for example in its post-Mycenaean cemeteries.⁷ Excavations in the Mycenaean cemeteries of Makra Vounara and Moschou Vounara started in 1914.⁸ The first trials in the post-Mycenaean cemetery of Ialysos were held in 1916 and were followed by wider campaigns in 1922 and 1923, under Maiuri's direction. Afterwards, extensive excavations of the Geometric-Classical necropoleis were led by the two succeeding directors of the Department: G. Jacopi from 1924 until 1928, and L. Laurenzi in 1934. They brought to light a great number of graves, dated mainly from the Late Protogeometric until the fifth century BC. A quick publication of most of them appeared in the *Annuario della Scuola Archeologica Italiana di Atene* 1923-1924 and *Clara Rhodos* III (1929) and VIII (1936).⁹ A new, updated publication of them is required, in order to make available new photographs and drawings, as well as

1 On the history of Italian archaeology in the Dodecanese, see especially Beschi 1986a, 116-120; Petricioli 1990, 149-167, 200-206; Liviadiotti & Rocco 1996a; Barbanera & Terranato 1998, 100-101, 126-127, 150-152; Petricioli 2000; Mangani 2005-2007; Labanca 2009; D'Acunto 2014b; Barbanera 2015, 111-112, 132; Santi 2018; D'Acunto forthcoming.

2 For the reasons behind Maiuri's choice, see Maiuri 1916, 271-274.

Fig. 1. Ialysos, map of the LPG-Archaic cemeteries. Courtesy: Ephorate of Antiquities of the Dodecanese.



The Rhodian period is described by the author himself in Maiuri 1962, 7-52; Maiuri's bibliography on Rhodes is reported in *Gli archeologi italiani in onore di Amedeo Maiuri*, 16-18.

3 Cf. Maiuri 1958, 28. On the history of Danish excavations, see Rasmussen & Lund 2014, with bibliography.

4 Maiuri 1923-1924, 83; Maiuri 1958, 26-29; cf. Petricoli 1990, 158. On Salzmänn and Biliotti and their extensive investigations on Rhodes, see Coulié 2014b.

5 Maiuri & Jacopich 1928, 17.

6 Maiuri 1916, 271-274.

7 For a survey of the available information about this uncontrolled digging, see D'Acunto forthcoming.

8 Maiuri 1916, 271-274; for a systematic edition, see Maiuri 1923-1924, 88-247; the up-to-date reference is their new publication by Benzi 1992.

9 Maiuri 1923-1924; Jacopi 1929; Laurenzi 1936b.

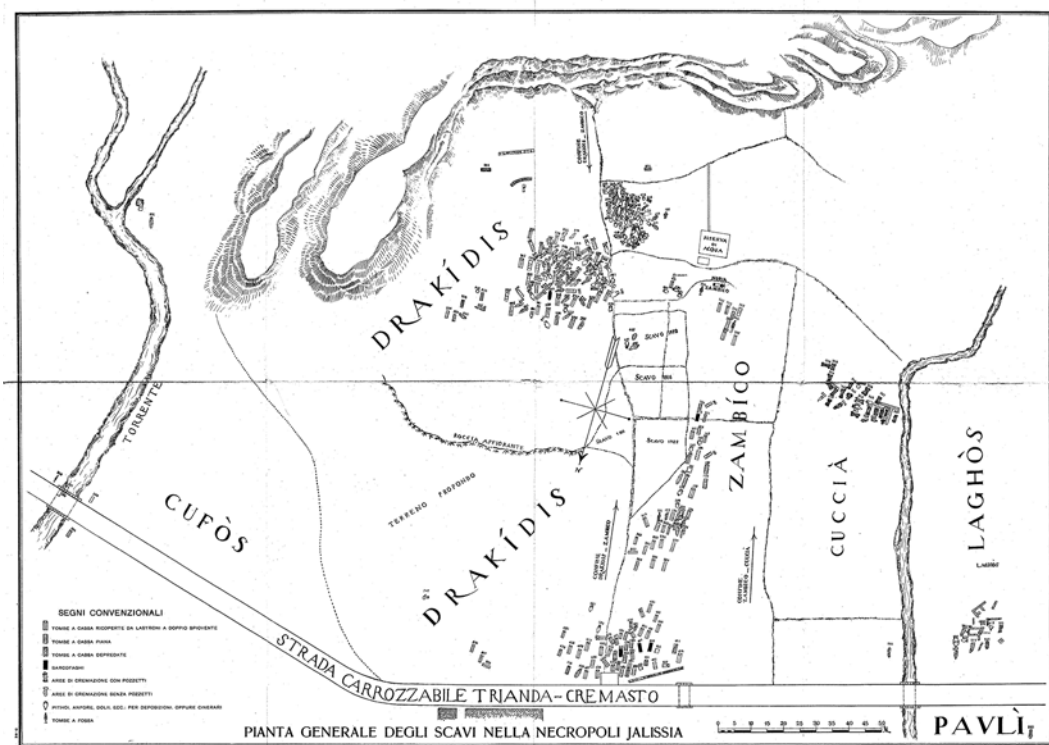


Fig. 2. Map of the necropolis of Ialysos, occupying the Marmaro plots on the plain: excavations 1916, 1923-1928. After Jacopi 1929, map outside the text.

fashion an accurate description of the grave gifts; this is being undertaken by the University of Naples L'Orientale, in cooperation with the Department of Antiquities of the Dodecanese and the Italian School of Archaeology in Athens.¹⁰

The main core of the post-Mycenaean cemetery of Ialysos consists of the wide nucleus of Marmaro, which grew up on the plain: it starts from the lowest slopes of Mt. Philerimos and extends towards the sea, considerably beyond the modern road linking the airport to Rhodes city, and from west to east it includes the plots that in the period of the Italian occupation were named Tsisimoiroi, Koukkia, Laghos, Tsambico, Drakidis and Cuphos, right up to the northeasternmost part of Marmaro excavated in 1934. Other nuclei grew up on the plain in Marchaki, San Giorgio, Annuachia and Kremasti, and on the hills of Daphni and Annuachia.¹¹

From the Early Iron Age – LPG to MG II – small nuclei of graves are found scattered in the plots of Marmaro, Tsisimoiroi, Laghos, Platsa Daphniou, Annuachia and Kremasti, thus suggesting that the settlement was organised in clusters, occupying both the plain and the hills near

to Mt. Philerimos from the end of the tenth until the middle of the eighth century BC (Fig. 1). Contrariwise, starting from the end of MG II onwards, we may easily recognise the birth of an extensive necropolis on the plain, in the areas corresponding to the Marmaro plots; this archaeological picture seems to imply the nucleation process of the settlement, though the urban areas still await identification and excavation (Fig. 2).¹²

BURIAL CUSTOMS: SECONDARY AND PRIMARY CREMATIONS AS SINGLE BURIALS AND THE QUESTION OF DISTURBANCES

In Ialysos, the burial customs and grave types from LPG until 550-525 BC may be divided into two main phases.¹³

The earliest (LPG-EG: c. 940-850 BC) is characterised by secondary cremations in urns for adults¹⁴ and inhumation in *enchytrismos*¹⁵ or pits¹⁶ for infants: in total only eight such tombs have been found in the plots of Marmaro and Tsisimoiroi on the plain, and on the hills of Platsa Daphniou and Annuachia, as well as, perhaps, Kremasti.

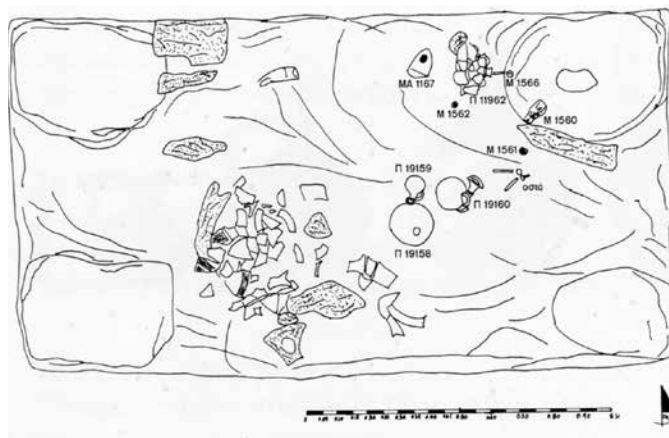
In the second phase from MG (c. 850-750 BC) until 550-525 BC, the rule became for non-adults the *enchytrismos*



Fig. 3. Ialysos, Tombs CXXXVIII/462 and CXXXIX/464, Tsambico south plot, inhumations in enchytrismoi, LG II. After Jacopi 1929, fig. 140.

(Fig. 3) and for adults the so-called ‘aree di cremazione’ (according to the Italian definition): the latter consist of primary cremations occupying long pits, whose shape is often rectangular (or irregular) and characterised by the presence of four small pits at the corners (Figs. 4-5). In contrast with the first phase and starting from the end of MG II, a great number of these kind of burials were spread over the Marmaro area and the other Ialysian plots.¹⁷

The ‘area di cremazione’ with its peculiar four pits in the corners is a specific custom of the Geometric-Archaic cemeteries of Rhodes (Ialysos, Kamiros and the territory of



Figs. 4-5. T. 3 Laghos, primary cremation, MG. Photo after Grigoriadou, Giannikouri & Marketou 2001, figs. 39-40; Courtesy: Department of Antiquities of the Dodecanese.

¹⁰ The first part of the publication is addressed to the Protogeometric and Geometric nuclei: d’Agostino 2006; D’Acunto 2017b; D’Acunto forthcoming. I would like to thank the former Director of the Ephorate of Antiquities of the Dodecanese, Dr. Melina Filimonos, and the present Director, Dr. Maria Michailidou, as well as the archaeologists, Drs. Eleni Farmakidou and Toula Marketou, and all the staff of the Archaeological Museum of Rhodes for their constant advice and help. My heartfelt thanks to the former Director of the Italian School of Archaeology in Athens, Prof. Emanuele Greco, and the present director, Prof. Emanuele Papi, for their unfailing support. My work would not have been possible without the valuable advice of Prof. Bruno d’Agostino, formerly responsible for the project on behalf of the University of Naples L’Orientale.

¹¹ On the topography of the Ialysian cemeteries, see especially Laurenzi 1936b, 9-19, fig. 1; Gates 1983, 4-21; Farmakidou 2004, 165-166, fig. 1; d’Agostino 2006.

¹² These topographic processes have been recognised by d’Agostino 2006; cf. D’Acunto 2017b; D’Acunto in preparation.

¹³ For an overview and discussion of burial customs and grave types, see Laurenzi 1936b, 10-19; Gates 1983, 22-32; Grigoriadou, Giannikouri & Marketou 2001, 395-399; D’Acunto 2017b; D’Acunto forthcoming.

¹⁴ For the publication of the contexts, see T. 43 Marmaro (EG): Laurenzi 1936b, 161-164, figs. 149-151. T. 44 Marmaro (LPG): Laurenzi 1936b, 164-165, fig. 152. T. 45 Marmaro (LPG): Laurenzi 1936b, 165, fig. 153. T. 98 Kremasti (EG), whose grave gifts have been published only in part: *Excavations Diaries*, 15 September 1923; Papapostolou 1968, 82-84, nn. 30 and 37, pl. 38. T. 1949 Kremasti (EG), uncontrolled excavation and unpublished finds: Konstantinopoulos 1968, 432; d’Agostino 2006, 59. T. 1 Tsisimoiri (EG): Farmakidou 2004, 167-171, figs. 2-3.

¹⁵ T. CXXLI/470 Platsa Daphniou: Jacopi 1929, 146-147, fig. 142.

¹⁶ T. 2 Tsisimoiri: Farmakidou 2004, 171-174, figs. 4-5.

¹⁷ For the publication of the contexts of Marmaro and other plots, see Maiuri 1923-1924; Jacopi 1929; Laurenzi 1936b; Grigoriadou, Giannikouri & Marketou 2001.

Lindos) and Kos (city and Kardamaina).¹⁸ In his publication of the excavations conducted in Ialysos in 1916 and 1922, published in the *Annuario della Scuola Archeologica Italiana di Atene* 1923-1924, Maiuri had expressed the opinion that they were secondary cremations and that they contained the ashes of more than one deposition.¹⁹ In this last postulation, he was clearly conditioned by the hypothesis of multiple burials that K. F. Kinch had put forward for the primary cremations in the Vroulia cemetery.²⁰ However, from 1923, at least in Ialysos and later in Kamiros, it became clear to the Italian archaeologists that these tombs were primary depositions on the same site as the pyre and that each one held only a single burial.²¹ From 1924 this opinion was supported by G. Jacopi²² and strongly upheld by L. Laurenzi.²³ Later in 1993, these ‘aree di cremazione’ were carefully excavated and documented as primary depositions made on the very location of the pyre and as single burials by A. Grigoriadou, A. Giannikouri and T. Marketou, in the Laghos plot.²⁴

As to the question of possible disturbances, from the first campaign of 1916, A. Maiuri had realised that illegal excavation had been substantial in the necropolis of Ialysos too.²⁵ The landowner (Mr. Drakidis) had illicitly dug all around the Drakidis and Tsambico plots: according to Maiuri, his purpose was not to sell the finds, but only to establish his own collection of vases. However, exemplifying proper archaeological practice in this necropolis of Ialysos, we must underline that in their reports the Italian archaeologists – Maiuri, Jacopi, Laurenzi and the writers of the *Excavation Diaries* – are usually quite careful in pointing out when and where the burial contexts were found in disturbed conditions.

Despite this broad picture, drawn by the excavators themselves, a *communis opinio* has gained ground among modern scholars and is still increasing, largely resulting from E. Walter-Karydi’s publication of *Samos VI.1* in 1973.²⁶ This hypercritical position tends to dismiss as unreliable the assemblies of grave-goods in the tombs of Ialysos and Kamiros as published by the Italians. However, anyone carefully investigating these burial contexts will personally verify to the truth of the statement made by Ch. Gates about the Ialysian and Kamirian tombs of 625-525 BC: “the evidence for multiple burials and disturbed deposits is strong only in a small number of cases”.²⁷

Double/multiple burials are confined to certain occurrences, already identified by the Italians: in the

chamber tombs, a peculiarity of Kamiros,²⁸ and in a few other cases of inhumations.²⁹ In sum, none of the primary cremations found during the Italian excavations in both Ialysos and Kamiros offer any evidence for the reuse, after a short time lapse, of the same pit for successive depositions.

In Ialysos, cases for disturbances may be easily singled out by taking into account both the archaeologists’ reports and the intrusion of *much later* object/s among the assembly of grave gifts, which are otherwise of a piece, chronologically speaking. This situation is quite clear for several of the MG II-LG tombs excavated in the Tsambico south plot; in this area Mr. Drakidis had extensively dug up the later levels of the cemetery. Since the sixth-century graves were set at the same level as the Geometric ones (as is made clear by the Italian publication and *Excavation Diaries*), this caused some disturbances, both in ancient and modern times.³⁰

The purpose of the present paper is to give credence to this belief in the general reliability of these grave-goods assemblies as excavated by the Italians in Ialysos (and in Kamiros) and to show, through some examples, how they may be useful for establishing the chronology of Rhodian Protogeometric and Geometric pottery.

LPG-EG: THE CASE OF T. 43 MARMARO

T. 43 Marmaro is a secondary cremation in an urn, in turn buried in a pit (Fig. 6).³¹ This case illustrates how relative chronology (and hence absolute dates) might be perplexing in some burial contexts: the question is whether pottery of one style and believed to come from a closed burial assemblage is all contemporary, or whether the grave might include older objects. This important tomb demonstrates that the ‘rich lady’ here buried embodied, through customary burial goods, the richness of her *oikos* and the foreign relationships established by her family group.³²

The belly-handled amphora, used as a cinerary urn and to contain the other grave-goods, copies an Attic PG prototype, though it is a Rhodian product (Fig. 7).³³ This is shown by the combination of the concentric circles containing the St. Andrew’s cross of Aegean tradition with the netted triangles and series of lozenges, which

18 For a survey of the cemeteries of Ialysos and Kamiros, see Gates 1983, and recently Grigoriadou, Giannikouri & Marketou



Fig. 6. Rhodes, Archaeological Museum, T. 43 Marmaro (EG): some of the grave offerings (objects not to scale). Photo after Coulié & Philimonos-Tsopotou (eds.) 2014, fig. 24.

- 2001; in the territory of Lindos, see Kinch 1914 (Vroulia) and Papachristodoulou 1983 (Vati). For the island of Kos, see Bosnakis 2001 (city); Skerlou 2001 (Kardamaina).
- 19 Maiuri 1923-1924, 258, 290, 303-309, 332-333.
- 20 Kinch 1914, 53-90.
- 21 Ialysos: *Excavation Diaries* 1923, especially 24 September.
- 22 Jacopi 1929, 8-11.
- 23 Laurenzi 1936b, 11.
- 24 Grigoriadou, Giannikouri & Marketou 2001.
- 25 Maiuri 1916-1920, 255; Maiuri 1923-1924, 257-258. Many references to Drakidis' uncontrolled digging are made in the *Excavation Diaries* of 1923-1929: cf. D'Acunto forthcoming.
- 26 Walter-Karydi 1973, 96-98, 112, n. 285. Cf. Gates 1983, 3, 61, n. 8.
- 27 Gates 1983, 3.
- 28 Gates 1983, 24-28; cf. D'Acunto 2017b, 450-454; D'Acunto forthcoming.
- 29 E.g. in Ialysos T. CLI/138 (c. 450-425 BC), which contains two inhumations of adults: Jacopi 1929, 152-153.
- 30 *Excavation Diaries* and Jacopi 1929: TT. L/390-LXIV/448 and CI/386-CXXXIX/464.
- 31 Laurenzi 1936b, 164-165, fig. 152.
- 32 Coldstream 2003, 46-47, fig. 11a-c, e-f; d'Agostino 2006, 58; D'Acunto 2017b, 442-444.
- 33 Rhodes, Archaeological Museum (hereafter AM), Inv. 15532: Coulié & Filimonos-Tsopotou (eds.) 2014, 176-177, no. 18.1 (E. Farmakidou), with bibliography.



Fig. 7. Rhodes, Archaeological Museum, inv. no. 15532, T. 43 Marmaro: belly-handled amphora, h. 0.56 m, LPG. Photo after Coulié & Philimonos-Tsopotou (eds.) 2014, 177.

Rhodes took up under the influence of Cypriot White-Painted style.³⁴ I. Lemos has rightly emphasised the purely PG character of the amphora, which therefore could still be LPG.³⁵

However, the other vases from this grave belong to a later stylistic phase, i.e. EG, though an early stage: they are in a debased Protogeometric style, as is shown by the irregular drawing of the concentric semicircles and of the lozenges, by the dominant dark-ground style and by the footless variant of the skyphoi.³⁶ Are all these vases contemporary? Or is the big amphora, used as the cinerary urn, an ‘antique’? The former hypothesis has to remain open, since succeeding styles may be made together and overlap. However, the second alternative gains ground when we consider that the amphora is an import from another part of the island, judging from its relatively micaceous clay, unusual for Ialysos. The present evidence advocates for Kamiros – with its conspicuous series of big belly-handled amphorae – as the best candidate, although the quality of the drawing on the item from Ialysos does not find close parallels there. The quality of the vase and its importation might guarantee it a special value and so a longer preservation.

Among the other grave offerings in T. 43 Marmaro, the two barrel juglets imported from Cyprus find their closest parallels in the White-Painted II phase; thus the Ialysos context provides a good chronological point of reference for this short phase in Cypriot pottery.³⁷

‘Antique’ status, in this case both exotic and securely older, attaches to the enigmatic faïence rosette: G. Pierrat-Bonnefois has suggested (in my opinion, convincingly) its provenance from the Palace of Ramses III at Tell el-Yahudiye.³⁸

This grave is surely an undisturbed context, since it reflects a closed assembly of grave gifts inside the cinerary urn. Hence, it illustrates the possibility of coexistence in the same context of grave offerings of several dates. This observation is in accord with the importance that Iron Age elites assigned to heirlooms and “biographical/entangled objects” (according to J. Whitley’s definition) to project symbolically their present social power into the past.³⁹ The grave assembly may include an item much older than the other burial offerings (here the rosette), as well as, perhaps, another that is closer but not strictly contemporary (here the amphora). Caution is thus required in considering the presence of vaguely-termed ‘earlier’ objects, including

simple vases, as possible evidence of disturbances and/or multiple burials in Rhodian graves.

THE END OF MG II: T. L/390 IN THE TSAMBICO SOUTH PLOT

Between late MG II and the end of LG, the Ialysian necropolis yielded many more burials than before. Unfortunately, there were no Corinthian vases in the tombs of this phase, but the presence of imports from other regions, especially Euboea, together with Crete, Cyclades and Attica, is helpful for establishing its chronological framework.⁴⁰ Also very useful for chronological purposes is the evolution of the local pottery, which is strongly influenced by Cypriot ceramics and to a lesser degree Phoenician ones.⁴¹ With regards to the end of MG II–LG, most of the evidence comes from the burials of the Tsambico south plot, published by Jacopi in 1929, together with a few other graves from Maiuri’s excavations of 1916 and Laurenzi’s in 1934, in the northeasternmost plot of Marmaro.⁴² They show a completely new development in the cemetery: extensive plots spread up onto the plain (Fig. 2); weapons disappear from the male graves, with few exceptions; and many *enchytrismoi* for infants and newborns show that formal burial was then extended to all age classes. From the funerary perspective, these aspects, taken all together, seem to reflect contemporary socio-political processes related to the birth of the *polis*.⁴³ In particular, the Tsambico south nucleus consists of some sixty tombs dated from late MG II to the end of LG. Its clustering suggests that this was a family plot. All graves are single depositions, both *enchytrismoi* and primary cremations.⁴⁴

As already shown by N. Coldstream, the earliest grave of this nucleus is T. L/390, a primary cremation.⁴⁵ Two of its grave gifts are North Ionian bird kotylai of the MG type, whose upper band is fully occupied by meander hooks (Fig. 8).⁴⁶ I believe that all (or almost all) bird kotylai found in Ialysos and generally on Rhodes are imports, as is suggested by the macroscopic analysis of the clay and the paint, which do not match those of local products;⁴⁷ they are clearly North Ionian, in line with M. Kerschner’s studies and H. Mommsen’s archaeometric analyses of the class.⁴⁸ It is important to point out that this burial also held a black skyphos showing an ancient repair; unfortunately, this vase is burnt, meaning any clay inspection is unreliable, but I consider it a possible import, perhaps from Euboea (Fig. 9).⁴⁹ Another possible import from Euboea is the black



Fig. 8. Rhodes, Archaeological Museum, inv. no. 11642, T. L/390: North Ionian bird kotyle, end of MG II. Photo: M. D'Acunto. Scale 1:2.

skyphos from T. LXXXII/2 near the temple A in Kamiros, in a context dated from c. 750 BC.⁵⁰ A similar date may be assigned to T. M in Exochi, containing another black cup showing an ancient repair.⁵¹ In order to understand the chronological aspects of T. L/390 in Ialysos, it is useful to remember that in Pontecagnano (Campania), black skyphoi with a shape close to that of T. L/390 were buried in the tombs of the local Ila phase and assigned by N. Kourou to a date corresponding with Attic LG Ia, i.e. c. 760-750 BC.⁵² The same association between the bird kotyle with meander fully occupying the upper panel and black skyphoi showing a similar profile occurs in the domestic levels of Klazomenai, carefully published by Y. Ersoy. They are also associated with a local variant of the pendent semicircle skyphos (PSC), which is related to Kearsley's type 4, hence not later than 750 BC (according to the traditional hypothesis).⁵³ These parallels and closed assemblies confirm for T. L/390 a date in the second part/end of MG II, from c. 770/760 until 750 BC. As to the other black skyphoi found in the necropolis of Ialysos, it must be recalled that local productions continue well into the LG phase.⁵⁴

34 D'Acunto forthcoming.

35 Lemos 2002, 23.

36 Rhodes, Archaeological Museum, inv. nos. 15533-15537; for their assignment in EG, see Coldstream 2008, 265-267, pl. 58a-d.

37 Rhodes, Archaeological Museum, inv. no. 15538a-b: Coldstream 1999, 111; Coulié & Filimonos-Tsopotou 2014, 182-183, nos.



Fig. 9. Rhodes, Archaeological Museum, inv. no. 11644, T. L/390: black skyphos, end of MG II. Photo: M. D'Acunto. Scale 1:2.

18-11 and 12 (E. Farmakidou); D'Acunto 2017b, 444, n. 28, with references.

38 Rhodes, Archaeological Museum, inv. no. 15544: Coulié & Filimonos-Tsopotou (eds.) 2014, 182-183, nos. 18-14 (E. Farmakidou); Pierrat-Bonnefois, Bouquillon & Coulié 2014, 89.

39 On these categories of objects, see recently Maran 2006, especially 131; Whitley 2002; Whitley 2013.

40 On Euboean imports, see D'Acunto 2017a. On imports from other regions, see D'Acunto 2017b; and in particular D'Acunto forthcoming.

41 On the evolution of Rhodian and in particular Ialysian Geometric pottery, see Coldstream 2008, 274-287, 479; and a reconsideration by D'Acunto forthcoming. On Cypriot and Phoenician influences, see Bourogiannis 2009; Bourogiannis 2012; Bourogiannis 2013.

42 Jacopi 1929; Maiuri 1923-1924; Laurenzi 1936b.

43 d'Agostino 2006; D'Acunto 2017b; D'Acunto forthcoming.

44 Jacopi 1929: TT. L/390-LXIV/448 and CI/386-CXXXIX/464.

45 Jacopi 1929, 84, pls. I-II; cf. Coldstream 2008, 274-279.

46 Rhodes, AM, Inv. 11642: Coldstream 2008, 277-279, pl. 61c; Papapostolou 1968, 96, pl. 44b; here Fig. 8, inv. no. 11642bis: unpublished.

47 D'Acunto 2017b, 467-470, figs. 26-28; and in particular D'Acunto forthcoming.

48 Akurgal *et al.* 2002, 63-92, figs. 11-19, pl. 1; recently, Radioğlu *et al.* 2015 with other references.

49 Rhodes, Archaeological Museum, inv. no. 11644: Jacopi 1929, 84; D'Acunto forthcoming.

50 Rhodes, Archaeological Museum, inv. no. 14736: Coulié & Filimonos-Tsopotou (eds.) 2014, 245, no. 82-1; the grave is published in Jacopi 1932-1933, 193-201, figs. 232-239; for the hypothesis of a Euboean import: d'Agostino 2006, 61.

51 Johansen 1958, 46, no. M 3, fig. 106. On the date of this context see *infra*.

52 Kourou 2005, 503-504, 514; d'Agostino 2001, 19.

53 Ersoy 2004, 44-49, fig. 3, especially i; cf. Kearsley 1989, Type IV, 95-100; for an updated bibliography on the chronologies of PSC, see Verdan *et al.* 2008, 81-82, where they accept the later date for the end of the class after 750 BC; *contra* Kourou 2005; d'Acunto & Giglio (eds.) 2010-2011, 223-235.

54 D'Acunto forthcoming.

Among the grave-goods of T. L/390 was erroneously included by the excavator a kylix of proto-Vroulian/Ionian type, which should be dated to the end of the seventh or beginning of the sixth century BC.⁵⁵ Its inclusion among the grave gifts of this burial may be due either to some dedication made on the earlier tomb, or to its disturbance by a later grave. The second hypothesis is strengthened by the reports of the *Excavation Diaries*, which describe the illegal wide trenches opened there by Mr. Drakidis. In Jacopi's publication of 1929, three more tombs of the Tsambico South plot (two primary cremations and an *enchytrismos* of the LG period) are erroneously credited with one and three later vase/s, respectively, dating from the end of the seventh to the middle of the sixth century BC:⁵⁶ since they are all of a much later date than the burials, it is clear that they do not reflect multiple depositions in the same pit/*enchytrismos*, but disturbances occasioned by the overlying reoccupation of the necropolis in the Archaic period.

LG II CONTEXTS AND THE CHRONOLOGICAL MARKER OF THE 'SPAGHETTI-STYLE' ARYBALLOS

If we turn to the LG phase, we find that Coldstream has already suggested that some vases were 'early' or 'late', but he did not introduce any sharp or clear-cut internal subdivision.⁵⁷ However, I believe that it is now possible to establish in Rhodian pottery a distinction into two sub-phases, namely LG I and LG II, as is the case for other Greek Geometric ceramic production.

For LG II, we must remember that Rhodian burial contexts lack the EPC globular aryballos, which is elsewhere almost ubiquitous. The best chronological marker of this sub-phase is therefore its Rhodian counterpart, namely the so-called KW (*Kreis- und Wellenband*) or 'spaghetti-style' aryballos. Its story is well-known since the groundbreaking work of K. F. Johansen's *Exochi*.⁵⁸ The Cypriot origin of the spaghetti-style class is shown by its decoration (usually in a matt pigment): it consists of small concentric circles and wavy lines, sometimes combined in a peculiar motif of compass-drawn semicircles tailing off into wavy lines, whose resemblance to spaghetti has resulted in the British sobriquet. In particular, for the commonest shape of the aryballos, the Cypriot prototype in White-Painted IV, a small jug with a ridged neck, is transformed in the Rhodian repertoire: its neck is shortened, the ridge is either lowered and placed to the side (as in the well-

known vase in Lund) or more usually disappears.⁵⁹ The spaghetti-style aryballos without a ridge on the neck shows a general affinity in its shape with the EPC one; a similar globular body, though a more pronounced disc-shaped mouth still recalls the Cypriot prototypes. The Ialysian repertoire shows variants both with and without the ridged neck, together with several other shapes decorated in the spaghetti style. This influential Cypriot fashion on Rhodes and in particular in Ialysos is difficult to explain by any other means than Coldstream's hypothesis – a group of immigrants, identified as Cypriots or Cypro-Phoenicians, establishing a steady local production of perfumes of a Cypriot flavour.⁶⁰ It is important to point out that outside Rhodes only the aryballoi without the ridge on the neck among the class of the spaghetti style were regularly traded:⁶¹ this phenomenon makes it even clearer how in LG II these were the competitors of the EPC aryballoi in the perfume market.⁶² The synchronism between the EPC globular aryballos and the spaghetti-style equivalent is well established, made clear by the finds from the cemeteries of many centres along the Mediterranean Sea where these spaghetti-style perfume containers were traded. The clearest and richest case is the necropolis of Pithekoussai, where spaghetti-style globular aryballoi are associated with EPC ones, as well as with other chronological markers of this phase in Corinthian production (e.g. Thapsos skyphoi without panel and lower body painted, EPC kotylai, kantharoi of the Ithaca type).⁶³ Such a rich presence in the Euboean market of Pithekoussai is not by chance: Euboeans, in their joint ventures with Phoenicians and Cypriots, may have been the main traders of the Cypro-Rhodian perfumes bottled in the spaghetti-style aryballoi during the LG II period.⁶⁴

Let us consider, for example, two burial contexts of Ialysos that may be dated to LG II by the presence of the spaghetti style class. T. LXII/444 contains two vases decorated in this style: a globular aryballos (Fig. 10) and a jug.⁶⁵ Among the grave-goods is a North Ionian bird kotyle of the Classical type, the panel being framed into four metopes, one with the eponymous bird (Fig. 11);⁶⁶ in the cemetery of Ialysos this variant appears only in LG II.⁶⁷ This date for the four-metopes variant is confirmed by other bird kotylai like those found in Italy: the Nestor cup from T. 168 in Pithekoussai, though it still lacks the bird, and those from Syracuse, Naxos and Megara Hyblaea referring to the four- or five-metopes variant with the bird, which must



Fig. 10. Rhodes, Archaeological Museum, inv. no. 11860, T. LXII/444: spaghetti-style aryballos, LG II. Photo: M. D'Acunto. Scale 1:2.

have a *terminus post quem* of c. 730 BC.⁶⁸ The importance of Rhodian contexts in building up the sequence of North Ionian bird kotylai is clear. Among these grave goods of T. LXII/444 was again erroneously included a later vase – a Middle Corinthian amphoriskos – probably due to the disturbance from the overlying Archaic necropolis.⁶⁹

A second context, tomb LXIV/448, may offer good synchronisms between spaghetti ware and imports.⁷⁰ It held a Euboean kotyle, a very debased version of the Aetos 666 type, where the chevrons have been changed into floating dashes (Fig. 12); this finds parallels in the Eretrian contexts of LG II and in a kotyle from Amathus dated by Coldstream at c. 725-700 BC.⁷¹ The grave offerings also



Fig. 11. Rhodes, Archaeological Museum, inv. no. 11856, T. LXII/444: North Ionian bird kotyle, LG II. Photo: M. D'Acunto. Scale 1:2.



Fig. 12. Rhodes, Archaeological Museum, inv. no. 11867, T. LXIV/448: Euboean kotyle, LG II. Photo: M. D'Acunto. Scale 1:2.

55 Rhodes, Archaeological Museum, inv. no. 11643; Jacopi 1929, 84, no. 2, pl. I.

56 1) T. LIII/406 (primary cremation): Inv. 11728, Laconian amphora (Jacopi 1929, 89, no. 4); Inv. 11729, Corinthian alabastron (Jacopi 1929, 89, no. 5, fig. 83); Inv. 11730, Ionian kylix of the B2 type (Jacopi 1929, 89, no. 6, cf. pl. I.CXXIX). 2) T. LXII/444 (primary cremation): Inv. 11859, Corinthian amphoriskos (Jacopi 1929, 107, no. 4, fig. 99). 3) T. CXI/401 (*enchytrismos*): Inv. 11684, Etruscan kantharos (Jacopi 1929, 138, no. 1, fig. 131).

57 Coldstream 2008, 274-287, especially 286-287 on relative chronology.

58 Johansen 1958, 155-161; cf. Coldstream 1969, especially 4, pl. IIh; Coldstream 1998, 256; Coldstream 2008, 276, pl. 62b; for a reappraisal of the 'spaghetti style' class during LG II, see D'Acunto forthcoming.

59 For the Cypriot prototype, see Gjerstad 1948, White-Painted IV Ware Jug 3b, 4; Johansen 1958, 160, fig. 224, cf. the imitation in Lund fig. 223.

60 Coldstream 1969; Coldstream 1998, 255-256; Kourou 2003, 252-253; Bourogiannis 2009; Bourogiannis 2012; Bourogiannis 2013; D'Acunto 2017b, 461-465: scholars only slightly disagree about the precise provenance of the Eastern Mediterranean immigrants.

61 D'Acunto forthcoming.

62 D'Acunto 2012, 200-215.

63 Buchner & Ridgway 1993; Ridgway 1992, 60-65; Nizzo 2008, 37, 119-120, B10.

64 D'Acunto 2017a, 368-370.

65 T. LXII/444: Jacopi 1929, 106-107, fig. 99, pls. III, VI. Rhodes, Archaeological Museum, inv. nos. 11860; 11857: D'Acunto 2017b, 462, fig. 24 (aryballos); Papapostolou 1968, pl. 41 (jug).

66 Rhodes, Archaeological Museum, inv. no. 11856: Jacopi 1929, 106, fig. 99; D'Acunto 2017b, 468, fig. 27.

67 D'Acunto 2017b, 468; D'Acunto forthcoming.

68 See discussion in D'Acunto forthcoming. On the Nestor's cup: Buchner & Ridgway 1993, T. 168.9, 219, 743-759, pls. CXXVI-CXXVIII, 72-73.

69 Rhodes, Archaeological Museum, inv. no. 11859: Jacopi 1929, 107, fig. 99.

70 Jacopi 1929, 107-109, fig. 101, pls. I, II, V.

71 Rhodes, Archaeological Museum, inv. no. 11867: Jacopi 1929, 107-108, figs. 101 and 138 (there erroneously ascribed to T. 441/CXXI); D'Acunto 2017a, 363-365, figs. 5-6.

included a mug decorated in spaghetti style (Fig. 13) and a juglet in Bichrome IV imported from Cyprus, again a good synchronism for a Cypriot vase.⁷²

Thus, if the key point of LG II is the synchronism between the EPC globular aryballos and the spaghetti-style one, we can suggest a chronology of 720-690 BC for the Rhodian phase too (if we follow Coldstream's traditional chronology of Corinthian pottery).⁷³ The synchronism of the lower limit between the EPC and the Rhodian LG II is supported by several burials from Kamiros and T. A in Exochi. T. VII/9 of Papatislures in Kamiros (an *enchytrismos* containing a single burial of an adolescent) held an original EPC pyxis, dated at the very end of Early Protocorinthian by the series of the debased wirebirds and the broad bands near the base.⁷⁴ Its grave gifts included a Mycenaean LH IIIA kylix, an 'antique',⁷⁵ and a kantharos still in a pure LG style,⁷⁶ while there are also a kotyle and a skyphos showing a debased decoration of tremuli, which seems to be very late in the Late Geometric.⁷⁷

Another interesting LG II context is T. XXIII/28 of Papatislures in Kamiros, an *enchytrismos* containing a deposition of an infant.⁷⁸ Together with a bronze fibula, its grave gifts were an original, quite late EPC kotyle with a dotted serpent in the band between the handles, and a spaghetti-style aryballos. The body of the aryballos, the shoulder of which is beginning to be flattened, reflects the emergence of the new roughly biconical variant, which coexists for a while with the older globular one; the latter fades away at the end of LG II, while the former continues and sharpens its carination beyond this limit.⁷⁹ Indeed, both the globular and roughly biconical aryballoi in spaghetti ware occur together, i.e. in late LG II, as is shown by their coexistence in the same grave – T. VIII/10, a primary cremation of the same Kamirian cemetery.⁸⁰

Accordingly, the correspondence between the EPC and the spaghetti-style globular aryballoi suggests their synchronism during the LG II phase. In addition to this more general characteristic, a single significant context suggests that the limit of Rhodian LG II does not go beyond the corresponding one of EPC: the rich assemblage of tomb A in Exochi.⁸¹ A primary cremation with the characteristic pits at the four corners, there was an infant *enchytrismos* in a pithos laid on its southern edge. With the exception of the few objects buried in the *enchytrismos*, all the other grave gifts of T. A belong to the primary cremation. Among the vases, the latest style is that of the neck-handled

amphora no. 1, a Rhodian product.⁸² Its slim shape and decoration reflect influences from the Naxian Bb class of Delos, still LG. However, in the man depicted on the neck the geometric silhouette is broken by the introduction of the linear rendering of the head; its closest parallels are with the beginning of the Early Protoattic style in the Analatos hydria, as already pointed out by Coldstream.⁸³ Among the grave offerings of T. A, two kotylai are original and late Early Protocorinthian.⁸⁴ Six Rhodian kantharoi still have ties to the tradition of the local LG,⁸⁵ except one, with rosettes showing influence from the Orientalising styles (see the leaves).⁸⁶ Lastly, three spaghetti-style aryballoi (if we rely on the published drawing of one of them) seem to match the new variant of biconical shape, which appears at the end of LG II.⁸⁷ All in all, in T. A of Exochi, a quite precise chronology, both relative and absolute, may be established by the coexistence of the late EPC kotylai, the roughly biconical aryballos and the number of Rhodian products still in the LG II style, as well as by the earliest appearance in one of the kantharoi and the amphora of post-Geometric traits, under Cycladic and Protoattic influence. All of this suggests a relative chronology at the very end of the local LG II phase and an absolute date at c. 700-690 BC (according to Coldstream's orthodox chronology).

Despite this context, Coldstream suggested lowering the end of Rhodian (and East Greek) LG to c. 680 BC, based mainly on the primary cremation T. VIII/209 of the Drakidis plot in Ialysos.⁸⁸ Together with a bronze vase and a bronze fibula, this held three vases. They comprise an imported aryballos of conical shape (transitional from globular to ovoid), which therefore has to be contemporary with the beginning of the MPC phase (c. 690-650 BC, according to the traditional chronology);⁸⁹ its clay suggests an Attic production and, as pointed out by Coldstream, the drawing of the animals shows affinity with the later work of the Early Protoattic N-Painter.⁹⁰ There was also a spaghetti-style aryballos or jug (the neck is missing), the body of which is roughly biconical, while its profile is still rounded.⁹¹ The third vase of T. VIII/209 is an incomplete high-necked kantharos, decorated with two series of tremuli on the neck and on the shoulder (Fig. 14).⁹² Coldstream is right in arguing that this item is yet in the tradition of the high-necked Rhodian kantharoi of the LG period, as with that of T. A in Exochi.⁹³ However, if we consider the latter and other similar LG Rhodian kantharoi, the decoration of which maintains the Geometric regularity, the example



Fig. 13. Rhodes, Archaeological Museum, inv. no. 11868, T. LXIV/448: spaghetti-style mug, LG II. Photo: M. D'Acunto. Scale 1:2.



Fig. 14. Rhodes, Archaeological Museum, inv. no. 10549, T. VIII/209: kantharos. Photo: M. D'Acunto.

from grave VIII/209 must rather be considered as a late Sub-geometric version, since the tremuli are drawn in a very irregular way and some of them do not reach the borders of the band. In conclusion then, this vase and its context of c. 690-680 BC, together with the slightly earlier item in T. A in Exochi, support the hypothesis that the end of Rhodian LG does not go beyond 690 BC (again, within the general framework of Coldstream's orthodox chronology). Although my proposal for the end of the local LG is roughly a decade earlier than Coldstream's, my evaluation of these grave assemblages is essentially close to his. In his view, "we must therefore fix the end of our Rhodian Geometric series near the lower limit of Early Protoattic and after the beginning of Middle Protocorinthian" (an opinion with which I disagree), and as a result he was forced to concede "that the first isolated attempts at an early Orientalizing figure style" (e.g. the amphora from T. A in Exochi) "fall well within the later development of our LG".⁹⁴ In support of his chronology, Coldstream also argued that

72 Rhodes, Archaeological Museum, inv. no. 11868, mug: Jacopi 1929, 108, fig. 101; here fig. 13. Rhodes, Archaeological Museum, inv. no. 11869, Cypriot juglet: Jacopi 1929, 108, fig. 101; D'Acunto 2017b, 459-450, fig. 19; cf. Gjerstad 1948, Bichrome IV Jug 6a, cf. 7b.
73 Coldstream 2008, 322-330. Conversely, C. W. Neef, in his study on the evolution of Protocorinthian aryballoi, has suggested a late date at c. 680/675 BC for the end of EPC/LG II and the transition to MPC (Neef 1987, 380).
74 Rhodes, Archaeological Museum, inv. no. 13710: Jacopi 1932-1933, 32, no. 4, figs. 33, 35; for its relative chronology at the very end of EPC, see Coldstream 2008, 286, cf. 105 on wirebirds on the Corinthian vases.

75 Rhodes, Archaeological Museum, inv. no. 13711: Jacopi 1932-1933, 34, no. 5, fig. 33 left on the top. This had been wrongly identified by Coldstream as "the earliest of the local pedestalled kantharoi, typical of our LG phase" (Coldstream 2008, 286). It refers to the Mycenaean type Furumark FS 272: Furumark 1941, 631-632, pl. 149 (LH IIIA1-2).
76 Rhodes, Archaeological Museum, inv. no. 13714: Jacopi 1932-1933, 34, no. 7, figs. 33 and 36.
77 Rhodes, Archaeological Museum, inv. no. 13712-13713: Jacopi 1932-1933, 34, no. 6, fig. 33 bottom left and top right.
78 Jacopi 1932-1933, 74 and 78, fig. 76 bottom in the centre; on its date cf. Coldstream 2008, 286.
79 Rhodes, Archaeological Museum, inv. no. 13794: EPC kotyle; 13795: spaghetti-style aryballos. On the coexistence among the spaghetti-style aryballoi of the two variants - the globular and the roughly biconical ones - in the advanced/late LG II, see D'Acunto forthcoming.
80 Rhodes, Archaeological Museum, inv. nos. 13716-13723: Jacopi 1932-1933, 35, 38, no. 2, figs. 37, 39-40.
81 Johansen 1958, 12-21, figs. 5-31; Coulié & Filimonos-Tsopotou (eds.) 2014, 168-171 (S. Schierup).
82 Johansen 1958, no. A1, 12-14, 86, 88-102, 148, 156, figs. 5-7, cf. fig. 196; Coulié & Filimonos-Tsopotou (eds.) 2014, 168-169, no. 15-1.
83 Coldstream 2008, 281, 286, cf. pl. 36e.
84 Johansen 1958, 15, nos. A8-9, fig. 14.
85 Johansen 1958, 14-15, nos. A2-A7, figs. 8-12.
86 Johansen 1958, 14, no. A3, fig. 9.
87 Johansen 1958, 18, nos. A13-A15, fig. 19.
88 Coldstream 2008, 286, 330. On T. VIII/209, see Jacopi 1929, 37-38, fig. 22.
89 On the conical shape in the relative series of Protocorinthian aryballoi, see Neef 1987, 33, 89-125.
90 Rhodes, Archaeological Museum, inv. no. 10553: Jacopi 1929, 38, fig. 22; cf. Coldstream 2008, 286.
91 Rhodes, Archaeological Museum, inv. no. 10550: Jacopi 1929, 38.
92 Rhodes, Archaeological Museum, inv. no. 10549: Jacopi 1929, 37, fig. 22.
93 Johansen 1958, 14, no. A4, fig. 10.
94 Coldstream 2008, 286-287.

an independent confirmation would come from the burial contexts on Rhodes of the earlier Sub-geometric bird bowls (Groups I-II Coldstream). Today their main production area is no longer considered as Rhodian, but North Ionian – backed with solid arguments.⁹⁵ The case referred to by Coldstream, that of grave CCI/4 Kekraki in Kamiros (a primary cremation with four pits at the corners),⁹⁶ is no longer to be considered as significant for down-dating the end of the LG phase. Indeed, its crater should not be taken as a coherent expression of the Geometric style at all.⁹⁷ It is better to label it as a Sub-geometric/early Orientalising product, because of the ornaments and the drawing technique employed in the band between the handles. The general shape of the vase is still in the tradition of the Attic MG II pedestalled craters of type II and their several Kamirian imitations, which continue well into the LG period. Its Sub-geometric/early Orientalising survival in T. CCI/4 accords, in a general way, with the products seen at Kamiros, which often display a very traditional and backward style of pottery.

LG I: RHODIAN BURIAL CONTEXTS AND CHRONOLOGY

Returning to LG I, its lower limit corresponds, therefore, in terms of absolute dates and with reference to orthodox chronology, to c. 720 BC. In the Ialysian and in general Rhodian styles, the LG I phase is characterised by the introduction of the metope/s, which break/s the long panel typifying the MG system that was occupied by a continuous motif (such as the ubiquitous meander of MG tradition).⁹⁸ In the LG pottery of Ialysos, the Cypriot influence is even stronger than it was in the MG, since it is not limited to the imitation of vase shapes, but affects the decoration too: the Black-on-Red technique is imitated both on Cypriot and local Greek shapes, but never reaches the quality of the originals produced in Cyprus.⁹⁹ In the Ialysian repertoire, the aryballos is fully painted and might be an imitation of a Corinthian prototype.¹⁰⁰ If we look at imports, alongside the Cypriot vases we find vases with other provenances: North Ionian bird kotylai of an intermediary stage between the MG and the LG II variations;¹⁰¹ and Euboean vases, which may be dated quite precisely, in the light of the recent publication of the Eretrian pits by Verdan, Kenzelmann-Pfyffer and L  derrey. The latter vases are the most significant for establishing the chronology of the Ialysian contexts.¹⁰²

In the cemetery of Ialysos, a rich and well-dated context of LG I is T. LI/393 (a primary cremation with four pits at



Fig. 15. Rhodes, Archaeological Museum, inv. no. 11648, T. LI/393: Euboean skyphos, LG I. Photo: M. D'Acunto. Scale 1:2.

the corners).¹⁰³ It held a Euboean skyphos, with a shape and decoration matching examples found in Italy, in Cyprus and in Eretria (Fig. 15): it fits the Eretrian phase of LG I, corresponding to Attic LG Ib, i.e. c. 750-735 BC.¹⁰⁴ An elaborate jug of Rhodian production (Fig. 16) has the main decoration, in the manner of the Dodecanese, on the shoulder; the introduction of the LG style is here shown by the break at the centre of the long band by a metope showing a complex 'tree' motif (an East Greek ornament, characteristic also of bird kotylai).¹⁰⁵ The strong Cypriot 'feel' of this burial context is given by the shape of this jug, characterised by multiple ridges on the neck, as well as by the presence, among the grave offerings, of a jug in Black-on-Red, which imitates the Cypriot prototypes,¹⁰⁶ together with three actual imports from Cyprus: two jugs in Black-on-Red II(IV)¹⁰⁷ and a two-handled Black-on-Red I(III) or preferably II(IV) juglet (Fig. 17).¹⁰⁸ This context, which is dated to c. 750-735 BC, is also a good point of reference for the transition to the phase IV of Cypriot pottery (corresponding to phase II of BoR).

In terms of relative and related absolute chronology, Coldstream has convincingly demonstrated that East Greek MG survived into the period of Attic LG Ia, i.e. in absolute dates to 760-750 BC.¹⁰⁹ Tomb LI/393 in Ialysos establishes a synchronism between the Eretrian phase of LG I and Rhodian LG I, in its earliest part.

Another important context of Kamiros raises doubts about Coldstream's proposal of down-dating the beginning of Rhodian LG I to c. 745 BC: T. LXXXII/2 near the Temple A.¹¹⁰ Among the rich set of its grave offerings, at least one vase of Rhodian production shows that we are dealing with an early LG context. This is the Rhodian imitation of the



Fig. 16. Rhodes, Archaeological Museum, inv. no. 11647, T. LI/393: Rhodian jug, h. 0.305 m, LG I. Photo: M. D'Acunto.

Black-on-Red jug of Cypriot type, with decoration on the shoulder divided into metopes in the LG manner, and with warriors that may reflect influence from the contemporary LG figural style of Attica and other centres.¹¹¹ A second vase showing early LG traits is the elaborate carinated cup, again a Rhodian product: its long and complex 'tree' motif is framed by single metopes containing an intricate motif of concentric circles and 'trees', although the meanders and the long central band clearly reflect the MG tradition (indeed, Coldstream dated it before the end of MG).¹¹² This

95 Akurgal *et al.* 2002, 63-105, pl. 2; Kadioğlu *et al.* 2015, with former bibliography; cf. Coldstream 2008, 287, 298-300, 479.

96 Jacopi 1931a, 345-348.

Fig. 17. Rhodes, Archaeological Museum, inv. no. 11652, T. LI/393: Cypriot bottle, BoR I(III)-II(IV). Photo: M. D'Acunto. Scale 1:2.



- 97 Rhodes, Archaeological Museum, inv. no. 12498: Jacopi 1931a, 346, no. 1, figs. 385-386.
- 98 Cf. Coldstream 2008, 274-287; D'Acunto forthcoming.
- 99 Coldstream 1969; Coldstream 1998, 255-256; Kourou 2003, 252-253; Bourogiannis 2009; Bourogiannis 2013; Kourou 2014, 83; D'Acunto 2017b, 454-465; D'Acunto forthcoming.
- 100 D'Acunto forthcoming; cf. d'Acunto 2017b, 457, fig. 15, middle left.
- 101 D'Acunto forthcoming; cf. d'Acunto 2017b, 468, fig. 28.
- 102 D'Acunto 2017a; cf. Verdan *et al.* 2008.
- 103 Jacopi 1929, 85-87, figs. 75-78.
- 104 Rhodes, Archaeological Museum, inv. no. 11648: D'Acunto 2017a, 359-361, figs. 1-2. On the chronology of Eretrian pottery, see Verdan *et al.* 2008, 105-111.
- 105 Rhodes, Archaeological Museum, inv. no. 11647: Jacopi 1929, 85, figs. 75-76.
- 106 Rhodes, Archaeological Museum, inv. no. 11651: Jacopi 1929, 87, no. 5, fig. 75 bottom left.
- 107 Rhodes, Archaeological Museum, inv. nos. 11649-11650: Jacopi 1929, 87, nos. 3-4, figs. 75 bottom right and top left, 78; Stampolidis & Karetsou 1998, 152, no. 109; D'Acunto 2017b, 459, fig. 17. Cf. Gjerstad 1948, BoR II(IV), 70, fig. XXXIX.2, Jug 14b, while this scholar (Gjerstad 1948, 263) considered 11649 as BoR I(III) - II(IV) and 11650 as BoR II(IV); see discussion in D'Acunto forthcoming.
- 108 Rhodes, Archaeological Museum, inv. no. 11652: Jacopi 1929, 87, fig. 75 top right; Stampolidis & Karetsou 1998, 168, no. 147; Gjerstad 1948, 263: BoR I(III); for a parallel in BoR II(IV), see Gjerstad 1948, fig. XXXIX.18, BoR Bottle 2.
- 109 Coldstream 2008, 273-274, 286.
- 110 Jacopi 1932-1933, 193-201, figs. 233-239.
- 111 Rhodes, Archaeological Museum, inv. no. 14739: Jacopi 1932-1933, 198, no. 6, fig. 232 top right; Coulié & Filimonos-Tsopotou (eds.) 2014, 232, no. 65 (V. Patsiada); Bourogiannis 2014a, 111, figs. 59-60.
- 112 Rhodes, Archaeological Museum, inv. no. 14737: Jacopi 1932-1933, 194, 198, no. 4, figs. 236-238; Coldstream 2008, 273, pl. 60d.

is also the case for the Rhodian pedestalled crater of the Attic type II, with decoration still in the MG tradition, as is made clear by the long panel reserved in the dark ground: it is decorated with a series of three Sub-protogeometric concentric circles including the St. Andrew's cross (cf. those of the LPG amphora from T. 43 Marmaro) and with a series of stars, while the birds are of a particular character consistent with a high chronology for the LG, such as in Attic and other production centres.¹¹³ Among the grave gifts of T. LXXXII/2 in Kamiros, the two gold diadems are decorated with a long meander panel of MG tradition.¹¹⁴ Lastly, the imported black skyphos recalls an early type, with a deep and round body, which is close to the example of T. L/390 of Ialysos (Fig. 9), in an MG II context.¹¹⁵ Hence, as is suggested by the Black-on-Red oinochoe, as well as probably by the carinated cup and the crater, this assemblage dates from the very beginning of LG I, while the other vases and the black skyphos suggest a chronology close to the middle of the eighth century BC. However, the chronological assessment of this context calls for caution, since it is a chamber tomb: the scanty available information about its excavation means one cannot exclude the possibility that it contained a double burial.¹¹⁶

If we refer to Coldstream's chronological framework of Greek Geometric pottery, an absolute date of c. 750 BC for the transition from MG II to LG I in the Rhodian series is also suggested by the relative sequence of the Tsambico south plot in Ialysos, as discussed above. Its earliest tomb L/390 appears to be fully MG II, and in particular at its end, according to the North Ionian import (the Bird kotyle) and the Euboean(?) one (the black skyphos). This reconstruction is supported by the parallel association of the same types in the domestic levels of Klazomenai, which must have a *terminus ante quem* of c. 750 BC (see the PSC related to Kearsley's type 4). The later well-dated tomb LI/393 fully falls within the earliest phase of Rhodian LG I, because of the co-existence of the Rhodian jug and the Euboean skyphos, which, with a date in the Eretrian LG I, suggests the same date for the grave, i.e. at c. 750-735 BC.

A third context is important in Rhodian pottery for the transition from MG II to LG I: tomb M in Exochi, which is a primary cremation with the four pits at the corners.¹¹⁷ Among its grave gifts, the crater is an import, or more likely a Rhodian imitation of the Attic pedestalled type of MG II (we only have the drawing of the vase to go on).¹¹⁸ The grave also held a black skyphos with an ancient repair

(again, only the drawing is available)¹¹⁹ and a kantharos related to the beginning of the Bird and Zig-zag Group.¹²⁰ The panel of the last is framed by metopes in the LG manner and the birds maintain the particular character of the earliest representations: thus, it must be at the beginning of LG I, perhaps c. 750-740 BC.

These contexts, taken all together, suggest that there is no reason to down-date the beginning of Rhodian LG I to 745 BC, as suggested by Coldstream. Of course, five years are not really discernible in archaeology: it seems pointless to change the traditional chronology. However, my proposal of c. 750 BC for the transition from MG to LG I aims at establishing a synchronism, which is apparent, between the beginning of the LG style in Rhodes and that of most of the other production centres, including the Euboean and Corinthian ones (but note Attica at 760, Crete 745 and Boeotia 740 BC).¹²¹ Indeed, it must be clearly stated that the essential question for us is not the absolute chronology, but the relative one – and in particular the rough alignment of the Rhodian Geometric with the Attic, Corinthian and Euboean ones. Hence the absolute dates suggested here are my proposal for establishing those synchronisms and relative sequences with the other main Geometric styles (Fig. 18).

The experiments in a figural style on the vases of Kamiros T. LXXXII/2 are therefore almost contemporary with the earliest ones of most other productions in Greece, following the strong contributions of Attica in LG Ia (and the end of MG II). However, the Rhodian Geometric products of Ialysos, Kamiros and Lindos maintain their peculiar characters, compared to the Attic, Corinthian and Euboean ones. They never became a true figural style, with the exception of birds and rare single human or narrative themes.

For defining the beginning of LG, some importance was assigned by Coldstream to two imported kantharoi from the necropolis of Ialysos, included among the grave gifts of tombs LVI/414¹²² and 51 of Marmaro respectively,¹²³ both of which are primary cremations. They reference the well-known Attic type of LG Ib characterised by three panels, the lateral ones including a bird and the central one a rosette. Coldstream considered both to be Cycladic imitations of the Attic type.¹²⁴ N. Kourou shares this opinion about the one from T. 51 Marmaro, but suggests an Attic provenance for the other.¹²⁵ My inspection of the vase supports Kourou's opinion: the colour of the clay and its inclusions, as well as the quality of the paint, recall Attic

fabric; the dotted rosettes with the stem and the quality of the drawing of the birds find close parallels in the well-known Attic series of LG Ib, starting from the examples found in the Kerameikos.¹²⁶ The other kantharos, from grave 51 Marmaro, is fragmentary and was burnt (clearly in the pyre); a Cycladic fabric, perhaps Naxian, is suggested by its micaceous clay with a thick white slip and by the less accurate drawing, with bolder lines.¹²⁷ However, from the chronological point of view, these two kantharoi are less significant, since both were buried in contexts later than Attic LG Ib (750-735 BC). T. LVI/414 is an LG II context, as it included several spaghetti-style juglets and a local Black-on-Red jug with decoration influenced by the same style.¹²⁸ T. 51 Marmaro does not hold any spaghetti-style vases, while one of the North Ionian bird kotylai appears to be influenced in its main frieze by the soldier-birds of EPC pottery;¹²⁹ this context may therefore be dated to early LG II. Hence, both imported kantharoi were ‘antiques’. Their value is also shown by the ancient repair made on that from T. LVI/414.

CONCLUSION

Grave offerings do not provide a precise chronology in either LG I or LG II for all the tombs of the Tsambico south plot, since a good number have no offerings, or contain just a few gifts devoid of chronological markers (mostly in the *enchytrismo*i for newborn burials). However – as is shown by my new study of this burial ground and will be displayed in detail in the forthcoming publication – the

113 Rhodes, Archaeological Museum, inv. no. 14734: Jacopi 1932-1933, 193, no. 1, fig. 232-234.

114 Rhodes, Archaeological Museum, inv. nos. 14741-14742: Jacopi 1932-1933, 200, no. 7, fig. 239.

115 *Supra* n. 49.

116 D’Acunto 2017b, 450-451.

117 Johansen 1958, 44, 46, figs. 103-106.

118 Johansen 1958, 46, no. M1, fig. 103.

119 Johansen 1958, 46, no. M 3, fig. 106; see *supra*.

120 Johansen 1958, 46, no. M2, fig. 104-105; on the Bird-and-Zigzag Painter, see Coldstream 2008, 280-281; cf. D’Acunto forthcoming.

121 See Coldstream 2008, 302-331, in synthesis 330. On Cretan and in particular Eleutherna chronology, see Kotsonas 2008, 31-52, synthesis at 32.

122 Rhodes, Archaeological Museum, inv. no. 11747: Jacopi 1929, 96, 98, no. 8, figs. 90-91.

123 Rhodes, Archaeological Museum, inv. no. 15579: Laurenzi 1936b, 172-173, no. 7, fig. 161 bottom centre.

	Rhodes	East Greece	Attica	Corinth	Euboea
Coldstream 1968	D’Acunto	Coldstream 1968	Coldstream 1968	Coldstream 1968	Verdan <i>et alii</i> 2008
900	LPG	LPG	LPG	LPG	
	EG (SubPG)	EG (SubPG)	EG I	EG	
EG II					
875					
850					
825	MG	MG	MG I	MG I	SubPGIIIa
800			MGII	MGII	SubPGIIIb (Lefkandi)
760			LG Ia	MG II (Eretria)	
750			LG Ib		
745	LGI	LG	LGIIa	LG	LGI
735			LGIIb		LGI
720					
700	LGII		EPA	EPC	LGII
690	EO			MPC	
680					

Fig. 18. Synoptic chronological table of Rhodian Protogeometric-Geometric pottery and the other main styles. M. d’Acunto.

124 Coldstream 2008, 286, n. 1, cf. pl. 10c.

125 Kourou 2014, 82-83, n. 40.

126 D’Acunto forthcoming.

127 D’Acunto forthcoming.

128 Jacopi 1929, 94, 96-97, figs. 90-91, pl. V. *Spaghetti style* vases: Rhodes, Archaeological Museum, inv. nos. 11743-11745. Local juglet of Cypriot type in BoR: Rhodes, Archaeological Museum, inv. no. 11742; cf. D’Acunto 2017b, 448, 461-462, fig. 22.

129 Rhodes, Archaeological Museum, inv. no. 15573: Laurenzi 1936b, 172-173, no. 1, fig. 161 top centre and bottom right. On soldier-birds in EPC kotylai, see Coldstream 2008, 105, pl. 20h.

topographical-chronological evolution of the Tsambico south plot immediately becomes clear when we locate those tombs, well-dated by their grave offerings, on the map of the burials published by G. Jacopi in 1929 (Fig. 2):¹³⁰ later tombs being added around earlier ones.¹³¹ Near the earliest grave L/390 of MG II are clustered LG I tombs, forming a ring. Later LG II tombs were added by and around the LG I ones, occupying an outer and larger area. Some tombs, undated by their grave offerings, may yet be assigned a chronology through their topographical position, depending on whether they lie in the ring of LG I burials or in that of LG II. Only a few will remain impossible to date: that is, those burials at the borders of the areas occupied by the LG I and LG II graves, since without the help of grave offerings, it is impossible to establish whether they go with one or the other sub-phase of the cemetery. The clustering process by which the Tsambico south plot was formed suggests that the dead were members of the same family group.

This discussion of the Ialysian and Rhodian burial contexts allows one to suggest synchronisms between Rhodian Geometric pottery and the main Greek products of Corinth, Attica and Euboea. My relative chronology, which is only slightly different and more detailed than Coldstream's, is summarised in the table of Fig. 18. If this relative chronology of Rhodian pottery is tied to the absolute dates, according to Coldstream's chronological framework of Greek Geometric pottery, my proposal is as follows:

- **LPG:** c. 940?-900 BC – We have no chronological markers for the beginning of this phase; the traditional date for the other main products, i.e. Attic and Euboean, is used.¹³²
- **EG** (in fact, a sub-Protogeometric phase): c. 900-850 BC.
- **MG:** c. 850-750 BC – Only a very few graves have been found for much of this period on Rhodes, though more are known from several sites on the island concerning the end of this phase, and therefore a MG II label is useful in identifying them.
- **LG I:** c. 750-720 BC – In terms of relative chronology, this sub-phase corresponds to Corinthian LG¹³³ and early on is equivalent to Attic LG Ib and the corresponding Eretrian/Euboean LG I (750-735 BC).
- **LG II:** c. 720-690 BC – This equates to Corinthian EPC by the synchronism established between the EPC and spaghetti-style globular aryballoi; in the Rhodian series a

roughly biconical variant appears at the end of this sub-phase. Spaghetti ware is indeed the main chronological marker of local LG II. It is important to point out that in Rhodian pottery outside Ialysos, where the spread of this class is much more limited, the distinction between LG I and LG II is less evident and thus needs a careful assessment site by site: i.e. Kamiros works in a different way to Lindos/Exochi and so on.

In conclusion, this analysis shows the potential, chronological and more, that a new detailed publication of the Italian investigations of the cemeteries of Ialysos and Kamiros offers.¹³⁴ The accounts of their excavations in their publications of *Clara Rhodos* and the *Annuario della Scuola Archeologica Italiana di Atene* appear in general to be reliable. In their burial contexts, as excavated by the Greek and Danish missions, as well as those of Salzmänn and Biliotti, the Rhodian cemeteries are by far the most consistent of all those in East Greece for the Iron Age and the Archaic periods. A fresh publication of them, with their priceless closed assemblies of grave goods, will surely deepen our knowledge of East Greek products, which has advanced so much in the last few years.¹³⁵

ABBREVIATION

Excavation Diaries: Giornale di Scavo, years 1923-1929: Manuscripts of the excavation diaries of the cemeteries of Ialysos on Rhodes, written by the Italian Archaeological Mission on Rhodes and by the Italian Department of Monuments and Excavations in the Dodecanese, now held in the Archive of the Department of Antiquities of the Dodecanese, Rhodes (missing 1913-1914 and 1934).

¹³⁰ Jacopi 1929, map outside the text.

¹³¹ D'Acunto forthcoming; d'Acunto 2017b, 456.

¹³² For an updated discussion of the absolute chronology of the Protogeometric see d'Agostino 2016, with references.

¹³³ The absolute dates of Corinthian LG have been recently questioned by K. De Vries (2003), while I consider the traditional system still reliable: for a criticism of De Vries' arguments, see d'Acunto & Giglio (eds.) 2010-2011, 234-235.

¹³⁴ A parallel new publication of the Italian excavations in the cemeteries of Kamiros is in progress by Dr. Isabella Bossolino.

¹³⁵ See recently Akurgal *et al.* 2002; Coulié & Villing 2014; Coulié 2015; Villing & Mommsen 2017, with references.

Bibliographic Abbreviations

		<i>AttiVenezia</i>	<i>Atti. Classe di scienze morali, lettere ed arti. Istituto Veneto di scienze, lettere ed arti</i>
AA	<i>Archäologischer Anzeiger</i>		
AAA	<i>Αρχαιολογικά ανάλεκτα ἐξ Ἀθηνῶν</i>	AWE	<i>Ancient West & East</i>
ABSA	<i>Annual of the British School at Athens</i>	BA	<i>Bollettino di archeologia</i>
ActaArch	<i>Acta Archaeologica</i>	BABesch	<i>Annual Papers on Classical Archaeology. (Formerly Bulletin Antieke Beschaving)</i>
ActaHyp	<i>Acta Hyperborea</i>	BAMuséeParent	<i>Bulletin archéologique du musée Parent</i>
ADelt	<i>Αρχαιολογικόν Δελτίον</i>	BAPD	<i>The Beazley Archive Pottery database</i>
AeR	<i>Atene e Roma</i>	BCH	<i>Bulletin de Correspondance Hellénique</i>
AJA	<i>American Journal of Archaeology</i>	BdA	<i>Bollettino d'arte</i>
AM	<i>Mitteilungen des Deutschen Archäologischen Instituts, Athenische Abteilung</i>	BICS	<i>Bulletin of the Institute of Classical Studies</i>
ANES	<i>Ancient Near Eastern Studies</i>	BPI	<i>Bollettino di Paleontologia Italiana</i>
AnnAstorAnt	<i>Annali di archeologia e storia antica. Istituto universitario orientale. Dipartimento di studi del mondo classico e del Mediterraneo antico</i>	BSA	<i>Annual of the British School in Athens</i>
AnnMusRov	<i>Annali del Museo Civico di Rovereto</i>	CahCEC	<i>Cahier Centre d'études chypriotes</i>
AquilNost	<i>Aquileia Nostra</i>	CAJ	<i>Cambridge Archaeological Journal</i>
ArcheologiaWarsz	<i>Archeologia. Rocznik Instytutu archeologii I etnologii Polskiej akademii nauk</i>	Chiron	<i>Chiron. Mitteilungen der Kommission für Alte Geschichte und Epigraphik des Deutschen Archäologischen Instituts</i>
ArtB	<i>The Art Bulletin</i>	CRAI	<i>Académie des inscriptions et belles-lettres. Comptes rendus des séances de l'année 19(20)</i>
ASAtene	<i>Annuario della Scuola archeologica di Atene e delle missioni italiane in Oriente</i>	ΔωδΧρ	<i>Δωδεκανησιακά Χρονικά</i>
Athenaeum	<i>Athenaeum. Studi di letteratura e storia dell'antichità</i>	GazBA	<i>Gazette des Beaux-Arts</i>

<i>Gnomon</i>	<i>Gnomon. Kritische Zeitschrift für die gesamte klassische Altertumswissenschaft</i>	<i>NSc</i>	<i>Notizie degli Scavi</i>
<i>GrRomByzSt</i>	<i>Greek, Roman and Byzantine Studies</i>	<i>OpAthRom</i>	<i>Opuscula. Annual of the Swedish Institutes at Athens and Rome</i>
<i>IG</i>	<i>Inscriptiones Graecae</i>	<i>Orizzonti</i>	<i>Orrizonti. Rassegna di Archeologia</i>
<i>IJOCA</i>	<i>International Journal of Comic Art</i>	<i>ÖJh</i>	<i>Jahreshefte des Österreichischen Archäologischen Institutes in Wien</i>
<i>IstMitt</i>	<i>Istanbuler Mitteilungen</i>	<i>Pharos</i>	<i>Pharos. Journal of the Netherlands Institute at Athens</i>
<i>JAmStud</i>	<i>Journal of American Studies</i>	<i>PP</i>	<i>La Parola del Passato</i>
<i>JdI</i>	<i>Jahrbuch des Deutschen Archäologischen Instituts</i>	<i>ProcDanInstAth</i>	<i>Proceedings of the Danish Institute at Athens</i>
<i>JHS</i>	<i>Journal of Hellenic Studies</i>	<i>QuadACagl</i>	<i>Quaderni. Soprintendenza archeologica per la provincie di Cagliari e Oristano</i>
<i>JMEH</i>	<i>Journal of Modern European History</i>	<i>RA</i>	<i>Revue Archéologique</i>
<i>JMIS</i>	<i>Journal of Modern Italian Studies</i>	<i>RE</i>	<i>Pauly, A. & Wissowa, G. 1839-1980, Realencyclopädie der classischen Altertumswissenschaft, Stuttgart</i>
<i>JSav</i>	<i>Journal des Savants</i>	<i>REA</i>	<i>Revue des études anciennes</i>
<i>JSNT</i>	<i>Journal of the Studies of the New Testament</i>	<i>RenaissStud</i>	<i>Renaissance Studies: Journal of the Society for Renaissance Studies</i>
<i>MedMusB</i>	<i>Medelhavsmuseet Bulletin</i>	<i>ROL</i>	<i>Revue de l'Orient Latin</i>
<i>MedAA</i>	<i>Mediterranean Archaeology and Archaeometry. International Journal</i>	<i>SMEA</i>	<i>Studi micenei ed egeo-anatolici</i>
<i>Mediterranea</i>	<i>Mediterranea. Quaderni annuali dell'Istituto di studi sulle civiltà italiane e del Mediterraneo antico del Consiglio nazionale delle ricerche</i>	<i>Speculum</i>	<i>Speculum: A Journal of Medieval Studies</i>
<i>MemAmAc</i>	<i>Memoirs of the American Academy in Rome</i>	<i>StCIOr</i>	<i>Studi Classici e Orientali</i>
<i>MonPiot</i>	<i>Monuments et Mémoires. Fondation Eugène Piot</i>	<i>SteMat</i>	<i>Studi e materiali. Soprintendenza ai beni archeologici per la Toscana</i>
<i>Nea Rhōmē</i>	<i>Nea Rhōmē. Rivista di ricerche bizantinistiche</i>	<i>StEtr</i>	<i>Studi Etruschi</i>

TransactAmPhilosSoc *Transactions of the American
Philosophical Society*

ZNW *Zeitschrift für die neutestamentliche
Wissenschaft*

ZPE *Zeitschrift für Papyrologie und
Epigraphik*

Bibliography

- Abildgaard, H. 1994
Ny dansk kunsthistorie. Tidlig modernisme, København.
- Abildgaard, H. 2014
En glemte kosmopolit. Kunstneren Astrid Holm, in: Glahn & Poulsen (eds.), 76-97.
- Aghion, I. & Avisseau-Broustet, M. 1994
Le duc de Luynes. Archéologue, historien, homme de sciences et collectionneur, *Revue de la Bibliothèque nationale de France*, 12-20.
- Akurgal, E. 1961
Die Kunst der Hethiter, München.
- Akurgal, M., Kerschner, M., Mommsen, H. et al. 2002
Töpferzentren der Ostägäis. Archäometrische und archäologische Untersuchungen zur mykenischen, geometrischen und archaischen Keramik aus Fundorten in Westkleinasien, Ergänzungshefte Öjh 3, Wien.
- Alberti, M. E. 2009
Ceramica minia, in: Jasink & Bombardieri (eds.), 185-191.
- Albertson, F. C. 2001
Zenodorus's Colossus of Nero, *MemAmAc* 46, 95-118.
- Algrain, I., Brisard, Th. & Jubier, C. 2008
Les vases à parfum à Atènes aux époques archaïque et classique, in: Verbanck-Pierard, A., Massar, N. & Frère, D. (eds), *Parfums de l'antiquité. La rose et l'encens en Méditerranée. Catalogue d'exposition*, Morlanwelz, 145-164.
- Aloi, V. 2008
Rodi: un posto al sole? L'identità territoriale dell'isola sotto i governatorati civili di Mario Lago e Cesare De Vecchi (1923-1940) (PhD diss., University of Roma Tre, Rome, unpublished).
- Amandry, P. 1953
Collection Hélène Stathatos. Les Bijoux antiques, Strasbourg.
- Ampolo, C., D'Agostino, B., Voutyras, E. et al. 2016
1914-2014. Per i cento anni dell'Annuario della Scuola Archeologica di Atene e delle Missioni Italiane in Oriente, *ASAtene* 92 (2014) I-XI.
- Amsinck, H. 1903
Den danske Ekspedition paa Rhodos, *Illustreret Tidende* 22, 350-352.
- Amyx, D. A. 1988
Corinthian Vase Painting of the Archaic Period, Berkeley.
- Antoniou, E. B. 1997
Η Χάλκη της Δωδεκανήσου σε παλιούς και σύγχρονος καιρούς, Rhodes.
- Antoniou, E. B. 2008
Χωριό-Ιστορική αναδρομή στην αρχαία Χάλκη, *ΔωδΧρ KB'*, 17-36.
- Archontidou-Argyri, A. 1977
Πυρά στη Μονόλιθο της Ρόδου, *ADelt* 32A, 261-280.
- Archontidou-Argyri, A. 1983
Μιμήσεις πρωτοκορινθιακών αγγείων από την Ρόδο, *ASAtene* 45, 19-29.
- Ashmole, B. 1951
Demeter of Cnidus, *JHS* 71, 13-28.
- Assimakopoulou, I. 2014
Coexistence of Mythological and Historical Elements and Narratives: Art in the Court of the Medici Dukes, London, 1537-1609 (Masters thesis, University of London, unpublished).
- Athanasoulis, D. et al. 2017
Vanity: Stories of Jewellery in the Cyclades. Exhibition catalogue, Αθήνα.
- Badoud, N. 2007
De la description en archéologie, Paper given at a workshop on the "Documentation of Amphora Stamps and the Study of Eastern Mediterranean Amphorae", Alexandria, 25-27 June 2007 (unpublished).
- Badoud, N. 2011a
Les colosses de Rhodes, *CRAI*, 111-152.
- Badoud, N. 2011b
L'intégration de la Pérée au territoire de Rhodes, in: Badoud, N. (ed.), *Philologos Dionysios. Mélanges offerts au professeur Denis Knoepfler*, Genève, 533-565.
- Badoud, N. 2012
L'image du Colosse de Rhodes, *MonPiot* 91, 5-40.

- Badoud, N. 2015
Le temps de Rhodes. Une chronologie des inscriptions de la cite fondée sur l'étude de ses institutions, München.
- Badoud, N. 2017a
Deciphering Greek Amphora Stamps, *CHS Research Bulletin* 5.2, 1-20.
- Badoud, N. 2017b
Deux fragments de boucliers votifs découverts en ville de Rhodes. Contribution à l'étude des esclaves publics, *ZPE* 204, 105-115.
- Badoud, N. 2017c
Inscriptions et timbres céramiques de Rhodes. Documents recueillis par le médecin et explorateur suédois Johan Hedenborg, Stockholm.
- Badoud, N. 2018
L'Apollon de Piombino, *JSav*, 185-288.
- Badoud, N. forthcoming (a)
Religion and Forgery. The Rhodian Cult of Alexander the Great.
- Badoud, N. forthcoming (b)
The Colossus of Rhodes. Archaeology of a Lost Wonder.
- Bagh, T. et al. 2007
Nationalmuseet og de danske arkæologiske ekspeditioner til Middelhavsländene, *Nationalmuseets Arbejdsmark 1807-2007*, 181-196. København.
- Bairami, K. 2011
Halki, in: Stampolidis et al. 2011, 167-176, 195-206, 222, nos. 7-24, 56.
- Bairami, K. 2012
Ο δὲ δαίμων ἔφθασε τοὺς χοῦς: εγχυτρισμός νεαροῦ ατόμου ἀπὸ το Παλαιόκαστρο Νισύρου, in: Adam-Veleni, P. & Tzanavari, K. (eds.), *Δινήεσσα, τιμητικός τόμος για την Κατερίνα Ρωμιοπούλου*, Θεσσαλονίκη, 269-276.
- Bairami, K. 2017
Large Scale Rhodian Sculptures of Hellenistic and Roman Times. Η μεγάλη ροδιακή πλαστική των ελληνιστικών και ρωμαϊκών χρόνων, Oxford.
- Baker, J. 2017
The Business of Satirical Prints in Late-Georgian England, *Palgrave Studies in the History of the Media (PSHM) online*, London.
- Baldoni, D. 2003
Vasi a matrice di età imperiale a Iasos, *Missione archeologica italiana di Iasos* 3, Roma.
- Barbanera, M. 2015
Storia dell'archeologia classica in Italia. Dal 1764 ai giorni nostri, Roma.
- Barbanera, M. & Terrenato, N. 1998
L'archeologia degli Italiani. Storia, metodi e orientamenti dell'archeologia classica in Italia, Roma.
- Barbera, M. et al. (eds.) 1999
Museo Nazionale Romano, La Collezione Gorga, Milano.
- Barchard, D. 2006
The fearless and self-reliant servant. The life and career of Sir Alfred Biliotti (1833-1915). An Italian Levantine in British service, *SMEA* 48, 5-53
- Barsanti, C. 2008
L'isola di Rodi nel *Liber insularum Archipelagi* di Cristoforo Buondelmonti, *Nea Rhōmē* 5, 357-380.
- Basso, E. 2001
Giustiniani, Andreolo, *Dizionario biografico degli Italiani* 57, Rome, 307-310.
- Bastet, F. L. 1987
De drie collecties Rottiers te Leiden, Leiden.
- Bates, W. N. 1916
Archaeological News, *AJA* 20, 95-124.
- Beazley, J. D., Payne, H. G. G. & Price, E. R. 1931
Corpus Vasorum Antiquorum. Oxford Ashmolean Museum 2. Great Britain 9, Oxford.
- Bendtsen, M. 1993
Sketches and measurings: Danish Architects in Greece, 1818-1862, Copenhagen.
- Benediktsson, J. 1940
Chronologie de deux listes de prêtres Kamiréens, København.
- Benson, J. L. 1989
Earlier Corinthian Workshops. A Study of Corinthian Geometric and Protocorinthian Stylistic Groups, *Allard Pierson series. Scripta minora* 1. Amsterdam.

- Benzi, M. 1992
Rodi e la civiltà micenea, *Incunabula Graeca* 94, Roma.
- Benzi, M. 2007
Vasi micenei da Rodi nel Museo Archeologico di Firenze, in: Guidotti, M.C., Lo Schiavo, F. & Pierobon, R. (eds.), *Egeo, Cipro, Siria e Mesopotamia. Dal collezionismo allo scavo archeologico. In onore di Paolo Emilio Pecorella, Catalogo Mostra*, Firenze, 86-97.
- Benzi, M. 2009
Rodi e l'Egeo orientale nel Tardo Bronzo, in: Jasink & Bombardieri (eds.), 16-23.
- Bertrand, A. 1862
Un vase et un pendant de collier provenant des fouilles de Kamiros, *RA* 6, 264-268.
- Bertrand, P. -F. 2006
A New Method of Interpreting the Valois Tapestries, through a History of Catherina de Médicis. Translated by Pamela J. Warner, *Studies in the Decorative Arts* 14, 27-52.
- Bernabò-Brea, L. 1964
Poliochni. Città preistorica nell'isola di Lemnos 1.2, Roma.
- Bernardini, C. 2001
La stipe votiva di Kamiros alla luce dei taccuini di scavo, *ASAtene* 79, 253-260.
- Bernardini, C. 2006
I bronzi della stipe di Kamiros, Monografie della Scuola archeologica di Atene e delle missioni italiane in Oriente 18, Atene.
- Berutti, S. 2017
Le collezioni egee al Museo Archeologico Nazionale di Firenze, in: Del Vesco & Mosio (eds.), 84-85.
- Beschi, L. 1976
Collezioni d'antichità a Venezia ai tempi di Tiziano, *AquilNost* 47, 1-44.
- Beschi, L. 1983
Le antichità di Lorenzo il Magnifico. Caratteri e vicende, in: Barocchi, P. (ed), *Gli Uffizi: Quattro secoli di una Galleria, Atti del Convegno Internazionale di Studi (Firenze, 20-24 settembre 1982)*, Firenze, 161-176.
- Beschi, L. 1986a
L'archeologia italiana in Grecia (1909-1940), in: La Rosa, V. (ed.), *L'archeologia italiana nel Mediterraneo fino alla seconda guerra mondiale, Atti del Convegno di Studi, Catania, 4-5 novembre 1985*, Catania, 107-120.
- Beschi, L. 1986b
La scoperta dell'arte greca, in: Settis S. (ed.), *Memoria dell'antico nell'arte italiana*, 3. *Dalla tradizione all'archeologia*, Torino, 295-372.
- Bessi, B. 2013
Cristoforo Buondelmonti: Greek Antiquities in Florentine Humanism, *The Historical Review / La Revue historique* 9, 63-76.
- Bikai, P. M. 1987
The Phoenician Pottery of Cyprus, Nicosia.
- Biliotti, E. & Cottret, A. 1881
L'île de Rhodes, Rhodes et Compiègne.
- Bindman, D. 2003
Blake as Painter, in: Eaves, M. (ed.), *The Cambridge Companion to William Blake*, Cambridge, 85-109.
- Birch, S. 1858
History of Ancient Pottery, London.
- Blet-Lemarquand, M., Coulié, A., Mazet, C. & Robcis, D. 2014
Les ateliers locaux. L'orfèvrerie rhodienne orientalisante, in: Coulié & Filimonos-Tsopotou (eds.), 93-99.
- Blinkenberg, C. 1931
Lindos. Fouilles de l'acropole 1902-1914, I. *Les petits objets*, Berlin.
- Blinkenberg, C. 1938
Triemiolia. Étude sur une type de navire rhodien, *Det kgl. Danske Videnskabernes Selskab. Arkæologisk-kunsthistoriske Meddelelser* II.3, *Lindiaka* VII, København.
- Blinkenberg, C. 1941
Lindos. Fouilles de l'acropole 1902-1914, II. *Inscriptions*, Berlin.
- Blinkenberg, C. & Johansen, K. F. 1925
Corpus Vasorum Antiquorum. Danemark 1, Copenhagen. Musée national 1, Paris.
- Blinkenberg, C. & Johansen, K. F. 1930
Corpus Vasorum Antiquorum. Danemark 2, Copenhagen. Musée national 2, Paris.
- Blinkenberg, C. & Kinch, K. F. 1907
Exploration archéologique de Rhodes. Quatrième Rapport. Fondation Carlsberg, *Oversigt over Det Kgl. Danske Videnskabernes Selskabs Forhandling* 1, København.

- Boardman, J. 2004
Copies of pottery: by and for whom?, in: Lomas, K. (ed.), *Greek Identity in the Western Mediterranean. Papers in Honour of Brian Shefton*, Leiden & Boston, 149-162.
- Boardman, J., Parkin, A. & Waite, S. (eds.) 2016
On the Fascination of Object. Greek and Etruscan Art in the Shefton Collection, Oxford.
- Boatwright, T. M. 2000
Hadrian and the Cities of the Roman Empire, Princeton.
- Bodnar, E. W. (ed.) 2003
Cyriac of Ancona. Later Travels, The I Tatti Renaissance library 10, Cambridge Mass.
- Bosnakis, D. 2001
Καύσεις νεκρών από την πόλη της Κω, in: Stampolidis (ed.), 223-257.
- Botha, P.J.J. 2004
Assessing Representations of Imperial Cult in New Testament Studies, *Verbum et Ecclesia* 25.1, 14-45.
- Bourogiannis, G. 2009
Eastern influence on Rhodian Geometric pottery: foreign elements and local receptiveness, in: Karageorghis, V. & Kouka, O. (eds.), *Cyprus and the East Aegean. Intercultural Contacts from 3000 to 500 BC, An International Archaeological Symposium held at Pythagoreion, Samos, October 17th-18th 2008*, Nicosia, 114-130.
- Bourogiannis, G. 2012
Rhodes, Cos and the White Painted ware of Cyprus. Introduction to contacts in the Early Iron Age, in: Stampolidis, N. C., Kanta, A. & Giannikouri, A. (eds.), *Athanasia. The Earthly, the Celestial and the Underworld in the Mediterranean from the Late Bronze and the Early Iron Age*, International archaeological conference Rhodes 28-31 May, Rhodes, 65-82.
- Bourogiannis, G. 2013
Who hides behind the pots? A reassessment of the Phoenician presence in Early Iron Age Cos and Rhodes, *ANES* 50, 139-189.
- Bourogiannis, G. 2014a
La céramique de Rhodes aux périodes protogéométrique et géométrique, in: Coulié & Filimonos-Tsopotou (eds.), 108-112.
- Bourogiannis, G. 2014b
Rhodes et les parfums, in: Coulié, A. & Filimonos-Tsopotou, M. (eds.), 112-115.
- Bourogiannis, G. 2015
Instances of Semitic writing from Geometric and Archaic Greek contexts. An unintelligible way to literacy?, in: Garbati, G. & Pedrazzi, T. (eds.), *Transformations and Crisis in the Mediterranean. 'Identity' and Interculturality in the Levant and Phoenician West during the 12th-8th Centuries B.C., Proceedings of the International conference held in Rome, CNR, May 8-9, Pisa*, 159-170.
- Bourogiannis, G. 2017
Cypriot evidence in seventh-century Rhodes. Discontinuity or change?, in: Charalambidou & Morgan (eds.), 60-70.
- Braun, W. 1914
Sixteen Nations Unite to Tell the Story of Books. An International Exhibition of Book Industry and Graphic Arts in Leipzig. Everything from Stone Tablet of Ramses III to Modern Press Is Shown. *New York Times*, 26 July.
- Bresson, A. 2010
Rhodes during the Siege of 305-304 BC. Population, Territory and Strategy of Defense, in: Faucherre, N. & Pimouget-Pedarros, I. (eds.), *Les sièges de Rhodes de l'antiquité à la période moderne*, Rennes, 103-133.
- Brewer, D. 2001
The Flame of Freedom. The Greek War of Independence 1821-1833, London.
- Brewer, D. 2010
Greece, The Hidden Centuries. Turkish Rule from the Fall of Constantinople to Greek Independence, London.
- Brijder, H. A. G. (ed.) 1984
Ancient Greek and Related Pottery. Proceedings of the International Vase Symposium, Amsterdam 12-15 April 1984, Allard Pierson series 5, Amsterdam.
- Brisch G. (ed.) 2006
World Enough, and Time. The Travel Chronicles of Mrs J. Theodore Bent, vol. 1, Greece and the Levantine Littoral, Oxford.

- Brock, J. K. 1957
Fortetsa. Early Greek Tombs near Knossos, Cambridge.
- Brodersen, K. 2007
Die Sieben Weltwunder. Legendäre Kunst- und Bauwerke der Antike, München.
- Brown, C. M. 1972
Giovanni Bellini and Art Collecting, *The Burlington Magazine* 114, 404-405.
- Brown, C. M. 1977
The Grotta of Isabella d'Este. Part I. *GazBA* 89/90, 155-171.
- Brown, C. M. 1978
The Grotta of Isabella d'Este. Part II. *GazBA* 91/92, 72-82.
- Brown, P. F. 1996
Venice & Antiquity. The Venetian Sense of the Past, Ann Arbor.
- Brusić, Z. 2000
Knidska reljefna keramika na jadranskim Nalazištima, *Opuscula Archaeologica* 23-24.1, 83-91.
- Buchner, G. & Ridgway, D. 1993
Pithekoussai I. La necropoli. Tombe 1-723 scavate dal 1952 al 1961, Monumenti Antichi. Serie Monografica IV. Roma.
- Buhl, M. L. 1974
A Hundred Masterpieces from The Ancient Near East in the National Museum of Denmark and the History of its Ancient Near Eastern Collection, Copenhagen.
- Buondelmonti, C. 1824
Florentini. Librum Insularum Archipelagi. E codicibus Parisinis regiis nunc primum totum edidit, praefatione et annotatione, Leipzig & Berlin.
- Buondelmonti, C. 1897
Description des îles de l'Archipel par Christophe Buondelmonti. Version grecque par un anonyme, Paris.
- Buora, M. & Magnani, S. 2016
Alcune iscrizioni graffite dai depositi del Museo Archeologico Nazionale di Aquileia, in: Buora, M. & Magnani, S. (eds.), *Le iscrizioni con funzione didascalico-esplicativa. Committente, destinatario, contenuto e descrizione dell'oggetto nell'instrumentum inscriptum. Atti del VI Incontro di Instrumenta Inscripta. Aquileia 26-28 marzo 2015, Instrumenta Inscripta* 6, Trieste, 393-396.
- Bürchner, L. 1899
Chalke, 2, *RE* III, 2066.
- Bøggild-Andersen, C. O. 1981
s.v. Høg, Just, *Dansk Biografisk Leksikon* 7, 3. udgave, København, 31-33.
- Caliò, L. M. 1996
Camiro. Storia degli scavi. La grande Stoà, in: Livadiotti, M. & Rocco, G. (eds.), *La presenza italiana nel Dodecaneso tra il 1912 e il 1948. La ricerca archeologica. La conservazione. Le scelte progettuali*, Catania, 60-66.
- Caliò, L. M. 2001
Il santuario di Camiro. Analisi delle strutture e ipotesi di ricostruzione della grande stoà dorica, *Orizzonti* 2, 85-107.
- Caliò, L. M. 2003
La scuola architettonica di Rodi e l'ellenismo italico, in: Quilici, L. & Quilici Gigli, S. (eds), *Santuari e luoghi di culto nell'Italia antica*, Roma, 53-74.
- Caliò, L. M. 2004
Lo ιεροθυτεῖον e la funzione della stoa di Camiro, *PP* 59, 436-459.
- Caliò, L. M. 2011
The Agora of Kamiros. A hypothesis., in: Giannikouri, A. (ed), *Η Αγορά στη Μεσόγειο. Από τους Ομηρικούς έως τους Ρωμαϊκούς χρόνους. Διεθνές Επιστημονικό Συνέδριο Κως, 14-17 Απριλίου 2011*, Αθήνα, 343-355.
- Canet, A. & De Vaivre, J.-B. 2017
Deux commandeurs amateurs d'antiquités grecques, *Société de l'histoire et du patrimoine de l'Ordre de Malte* 37, 63-100.
- Cante, M. 1996a
Le piccole Terme, in: Livadiotti & Rocco (eds.), 71-73.
- Cante, M. 1996b
Le abitazioni, in: Livadiotti & Rocco (eds.), 73-76.
- Caoursin, G. 1982
Beretning om belejringen af byen Rhodos = Descriptio obsidionis urbis Rhodie, oversat af Jakob Isager, Odense.
- Capodiferro, A. et al. (eds.) 2013
Museo Nazionale Romano. Evan Gorga. La collezione di archeologia, Milano.
- Casagrande, M. 2016
Dalla Sardegna all'infinito. Gian Giacomo Porro, un archeologo e i suoi, *QuadACagl* 27, 493-522.

- Casola, P. 1907
Canon Pietro Casola's Pilgrimage to Jerusalem in the year 1494, Manchester.
- Cassimatis M. Z. & Panetsos, G. A. (eds.) 2014
Hellenische Renaissance. The Architecture of Theophil Hansen (1813-1891), Athens.
- Cattaneo, C. & Grano, M. 2015
Considerazioni preliminari sull'aspetto vegetale delle isole di Chalki e Alimia (Arcipelago di Rodi, Egeo SE), *AnnMusRov* 30 [2015], 369-399.
- Çelikkol, Z. 1992
Rodos'taki Türk Eserleri ve Tarihçe, Ankara.
- Ceccanti, M. 1982
Milani: la preistoria e i confronti egeo-italici, *SteMat* V, 78-81.
- Chabouillet 1858
Catalogue général et raisonné des camées et pierres gravées de la Bibliothèque impériale, Paris.
- Chaffers, W. 1892
Catalogue of the Works of Antiquity and Art collected by the late William Henry Forman, esq., Pippbrook House, Dorking, Surrey, and removed in 1890 to Callaly Castle, Northumberland, by Major A. H. Browne, London.
- Challis, D. 2008
From the Harpy Tomb to the Wonders of Ephesus. British Archaeologists in the Ottoman Empire, 1840-1880, London.
- Chaniotis, A., Kaltsas, N. & Mylonopoulos, I. 2017
A World of Emotions. Ancient Greece, 700 B.C. - 200 A.D. Exhibition, New York March 9 - June 24, 2017, New York.
- Charalambidou, X. & Morgan, C. (eds.) 2017
Interpreting the Seventh Century B.C. Tradition and Innovation, Oxford.
- Chatzepoulou, E. 2000
Από τον τάφο 14, in: Stampolidis, N. & Parlama, L. (eds.), *Η Πόλη κάτω από την Πόλη, Exhibition Athens 2000-2001*, Athens, 232-233, nos. 208-212.
- Chatzidakis, M. 2017
Ciriaco d'Ancona und die Wiederentdeckung Griechenlands im 15. Jahrhundert. Cyriacus. Studien zur Reception der Antike 9, Mainz.
- Christensen, A. 2013
Anne Marie Carl-Nielsen født Brodersen, Odense.
- Chryssanthaki-Nagle, K. 2006
Les protomés et les protomés-bustes féminines de Macédonie et de Thrace revisitées. L'exemple des protomés-bustes de la maison A de Tragilos, *RA*, 3-31.
- Ciacci, L. 1991
Rodi italiana 1912-1923. Come si inventa una città, Venice.
- Ciacci, L. 1996
Il Dodecaneso e la costruzione di Rodi italiana, in: Livadiotti & Rocco, G. (eds.), 273-284.
- Clarke, E. D. 1812
Travels in Various Countries of Europe Asia and Africa II. Greece, Egypt and the Holy Land 1, London.
- Clayton, T. & O'Connell, S. 2015
Bonaparte and the British. Prints and propaganda in the age of Napoleon, London.
- Clogg, R. 2013
A Concise History of Greece, 3rd ed., Cambridge.
- Coldstream, J. N. 1968
Greek Geometric Pottery. A Survey of Ten Local Styles and their Chronology, London.
- Coldstream, J. N. 1969
The Phoenicians of Ialysos, *BICS* 16, 1-8.
- Coldstream, J. N. & Catling, H. W. (eds.) 1996
Knossos North Cemetery. Early Greek Tombs (Volumes I-IV), *BSA suppl.* 28, London.
- Coldstream, J. N. 1998
Crete and the Dodecanese: Alternative Eastern Approaches to the Greek World during the Geometric Period, in: Karagheorghis, V. & Stampolidis, N. C. (eds.), *Eastern Mediterranean. Cyprus, Dodecanese, Crete, 16th - 6th cent. B.C., Proceedings of the International Symposium, Rethymnon 13-16 May 1997*, Athens, 255-262.

- Coldstream, J. N. 1999
On Chronology: the CG II Mystery and its Sequel, in: Iacovou, M. & Michaelides, D. (eds.), *Cyprus. The Historicity of the Geometric Horizon, Proceedings of an Archaeological Workshop, University of Cyprus, Nicosia, 11th October 1998*. Nicosia, 109-115.
- Coldstream, J. N. 2003
Geometric Greece, 900-700 BC, London.
- Coldstream, J. N. 2008
Greek Geometric Pottery. A Survey of ten Local Styles and their Chronology, Exeter.
- Colin, J. 1981
Cyriaque d'Ancône. Le voyageur, le marchand, l'humaniste, Paris.
- Colonna, C. 2015
Le dessinateur du Cabinet des médailles, *Chroniques de la Bibliothèque nationale de France* 73, 23.
- Colonna C. & Haumesser, L. forthcoming
Dessiner l'antique au musée au XIXe siècle: Jean-Baptiste Muret (Cabinet des Médailles, BnF) et Jean-Charles Geslin (musée du Louvre), Paris.
- Cook, B. F. 1997
Sir Charles Newton, KCB, 1816-1894, in: Jenkins, I. & Waywell, G. (eds.), *Sculptors and Sculpture of Caria and the Dodecanese*, London, 10-23.
- Cook, J. M. 1934-1935
Protoattic pottery, *BSA* 35, 165-219.
- Cook, R. M. 1954
Corpus Vasorum Antiquorum. Great Britain 13, *British Museum* 8, London.
- Cook, R. M. & Dupont, P. 1998
East Greek Pottery, London.
- Coulié, A. 2013
La céramique grecque aux époques géométrique et orientalisante (XIe-Vie siècle av. J.-C.), Paris.
- Coulié, A. 2014a
La céramique de la Grèce de l'Est. Le style des chèvres sauvages. La collection du musée du Louvre. Paris.
- Coulié, A. 2014b
Les fouilles franco-britanniques au XIXe siècle, in: Coulié & Filimonos-Tsopotou (eds.), 24-35.
- Coulié, A. 2015
La céramique rhodienne aux époques géométrique et archaïque. Entre tout et rien, *CRAI*, 1313-1339.
- Coulié, A. & Filimonos-Tsopotou, M. (eds.) 2014
Rhodes. Une île grecque aux portes de l'Orient XVe-Ve siècle avant J.-C., Catalogue de l'exposition présentée au musée du Louvre du 14 novembre 2014 au 9 février 2015, Paris.
- Coulié, A., Frère, D., Garnier, N. & Marton, A. 2017
Le tombeau A de Camiros: les vases archaïques et leurs contenus. L'apport de l'étude chronologique et des analyses chimiques des résidus, *BC H* 141 [2018], 553-621.
- Coulié, A., Mazet, Ch. & Robcis, D., with the collaboration of Blet-Lemarquand, M. forthcoming
Pluies d'or. Recherches sur l'orfèvrerie rhodienne orientalisante. Du contexte archéologique à l'atelier.
- Coulié, A. & Villing, A. 2014
La céramique rhodienne à l'époque archaïque, in: Coulié & Filimonos-Tsopotou (eds.), 116-119.
- Croissant, F. 1983
Les protomés féminines archaïques. Recherches sur les représentations du visage dans la plastique grecque de 550 à 480 av. J.-C. Bibliothèque des Ecoles françaises d'Athènes et de Rome 250, Athènes.
- Cultraro, M. 2017a
A Rodi con il corpo di spedizione militare, in: Del Vesco & Moiso, 82-83.
- Cultraro, M. 2017b
Al capezzale del morente Impero ottomano: le missioni tra 1913 e 1922, in: Del Vesco & Moiso, 83-84.
- Da Castiglione, S. 1999
Ricordi ovvero ammaestramenti, Faenza.
- D'Acunto, M. 2012
I profumi nella Grecia alto-arcaica e arcaica. Produzione, commercio, comportamenti sociali, in: Carannante, A. & D'Acunto, M. (eds.), *I profumi nelle società antiche. Produzione, commercio, usi, valori simbolici*. Paestum, 191-233.
- D'Acunto, M. 2014a
Geometric and Daedalic figurines from the Italian excavations in the necropolis of Ialysos, in: Yiannikouri, A. (ed.) *Κοροπλαστική και Μικροτεχνία στον Αιγαιακό Χώρο. Διεθνές Συνέδριο στη Μνήμη της Ηούς Ζερβουδάκη*, Πόδος 2009, Αθήνα, 69-78.

- D'Acunto, M. 2014b
L'archéologie italienne à Rhodes, in: Coulié & Filimonos-Tsopotou (eds.), 52-61.
- D'Acunto, M. 2017a
Euboean Imports in the Geometric Necropolis of Ialysos, in: Vlachou, V. & Gadoulou, A. (eds.), *ΤΕΡΨΙΣ. Studies in Mediterranean Archaeology in Honour of Nota Kourou, Études d'Archéologie* 10, Brussels, 359-373.
- D'Acunto, M. 2017b
The Protogeometric and Geometric Necropolis of Ialysos (Rhodes): Burial Customs, Commerce and Society, in: Mazarakis Ainian, A., Alexandridou, A. & Charalambidou, X. (eds.), *Regional Stories towards a new Perception of the early Greek World, Acts of an International Symposium in honour of Professor Jan Bouzek, Volos 18-21 June 2015*, Volos, 437-486.
- D'Acunto, M. forthcoming
La necropoli di Ialysos (Rodi): i periodi protogeometrico e geometrico. Gli scavi italiani (1914-1934), Monografie della Scuola Archeologica Italiana di Atene.
- D'Acunto, M. & Giglio, M. (eds.) 2010-2011
Le rotte di Odisseo. Scritti di archeologia e politica di Bruno d'Agostino, *AnnAstorAnt* 17-18 (2010-11).
- D'Agostino, B. 2001
La ceramica greca e di tipo greco dalle necropoli della I Età del Ferro di Pontecagnano, in: Modesti, G. B. & Gastaldi, P. (eds.), *Prima di Pithecusa. I più antichi materiali greci del golfo di Salerno. Catalogo della mostra, Pontecagnano Faiano, 29 aprile 1999*, Napoli, 11-24.
- D'Agostino, B. 2006
Funerary customs and society on Rhodes in the Geometric period. Some observations, in: Herring, E. et al. (eds.) *Across Frontiers: Etruscans, Greeks, Phoenicians & Cypriots. Studies in honour of David Ridgway & Francesca Romana Serra Ridgway*, London, 57-69.
- D'Agostino, B. 2016
La cronologia assoluta, in: Gastaldi, P. & D'Agostino, B. (eds.), *Pontecagnano. Dizionario della cultura materiale, III, 1. La Prima Età del Ferro*, Paestum, 17-18.
- Davis, M. T. 2016
The Vilification of Thomas Paine. Constructing a Folk Devil in the 1790s, in: Pentland, G. & Davis, M.T. (eds.), *Liberty, Property and Popular Politics. England and Scotland, 1688-1815. Essays in Honour of H.T. Dickinson*, Edinburgh, 176-193.
- Davoust, E. 1879
La collection Desnoyers au Musée historique d'Orléans, Orléans.
- Dean, E. P. 1979
La dominazione italiana e l'attività urbanistica ed edilizia nel Dodecanneso, 1912-1943, *Storia Urbana* 8, 3-47.
- Debois, L., Funder, L. & Poulsen, G. (eds.) 1991
Kvindelige Kunstneres Samfund. Jubilæumsudstilling 1916-1991, København.
- Decaudin, A. J. 1975
La collection de bijoux antiques du Musée Historique et Archéologique de l'Orléanais, Paris.
- De Caylus, A. C. P. 1762
Recueil d'antiquités, égyptiennes, étrusques, grecques, romaines et gauloises VI, Paris.
- De Franciscis, A. 1951
Marmi da Rodi e da Calchi nel Museo Archeologico Nazionale di Napoli, *Bollettino di Storia dell'arte. Istituto universitario di Magistero 'G. Cuomo' di Salerno* 1, 109-15.
- Dehl von-Kaenel, C. 2009
Corpus Vasorum Antiquorum. Deutschland 85. Berlin, Antikensammlung 10. Geometrische Keramik, München.
- De la Condamine, C. M. 1731
Journal de mon voyage du Levant (21 mai - 6 octobre 1731), Bibliothèque Nationale de France, ms. Fr. 11333.
- De Launay, L. 1895
Note sur la nécropole de Camiros dans l'île de Rhodes, *RA* 27, 182-197.
- Demargne, P. 1964
Naissance de l'art grec, Paris.

- Deligiannakis, G. 2015
Religious Viewing of Sculptural Images of Gods in the World of Late Antiquity. From Dio Chrysostom to Damaskios, *Journal of Late Antiquity* 8, 168-194.
- Del Vesco, P. & Moiso, B. 2017
Missione Egitto 1903-1920. L'avventura archeologica M.A.I. raccontata. Catalogo della mostra (Torino, 11 marzo - 10 settembre 2017), Turin & Modena.
- De Maria, S. & Rambaldi, S. 2004
Sabba da Castiglione e gli albori dell'archeologia greca, in: Gentilini, A. R. (ed.), *Sabba da Castiglione, 1480-1554. Dalle corti rinascimentali alla Commenda di Faenza. Atti del Convegno, Faenza, 19-20 maggio 2000*, Firenze, 329-356.
- De Ridder, A. 1911
Collection de Clerq, VII, Les bijoux et les pierres gravées, Paris.
- Descoedres, J. P. 1981
Corpus Vasorum Antiquorum. Schweiz 4, Basel, Antikenmuseum 1, Bern.
- Desnoyers, M. 1882
Catalogue du Musée historique et la ville d'Orléans, Orléans.
- Desnoyers, M. 1884
Un bijou cyprite, *Mémoires de la société archéologique et historique de l'Orléanais* 18, Orléans, 1-14.
- De Vita, R. 2013
Un epigramma greco di età ellenistica attribuito a Puteoli, *ZPE* 184, 73-84.
- De Vries, K. 2003
Eight-Century Corinthian Pottery. Evidence for the Dates of Greek Settlement in the West, in: Williams II, C. K. & Bookidis, N. (eds.), *Corinth XX. Corinth the Centenary, 1896-1996*. Princeton, 141-156.
- De Witte, J. 1842
Rapport sur un voyage archéologique fait en Italie et en Grèce, adressé à M. Nothomb, ministre de l'intérieur, *Bulletins de l'Académie Royale des Sciences et Belles-Lettres de Bruxelles, Année 1842. Tome IX. 2ème Partie*, 94.
- Dickie, M.W. 1996
What is a "Kolossos" and How Were "Kolossoi" Made in the Hellenistic Period?, *GrRomByzSt* 37, 237-257.
- Dietz, S. 1974
Two painted duck-vases from Rhodes, *ActaArch* 45, 133-143.
- Dietz, S. 1984
Lindos IV.1. Excavations and Surveys in Southern Rhodes. The Mycenaean Period, København.
- Dietz, S. & Papachristodoulou, I. 1988
Archaeology in the Dodecanese, Copenhagen.
- Dietz, S. & Trolle S. 1974
Arkæologens Rhodos, København.
- Dietz, S. & Trolle S. 1986
Carlsbergfondets ekspedition til Rhodos, 1902-1915. *Carlsbergfondets Aarsskrift*, 9-15, København.
- Di Maiuri, A. et al. (eds.) 1965
Gli archeologi italiani in onore di Amedeo Maiuri, Cava dei Tirreni.
- Di Rosa, A. 2012
Bolli su anfore ellenistiche da Rodi. La collezione G.G. Porro al Museo Nazionale Romano (PhD diss., Chair of Metodologie e tecniche della ricerca archeologica e archeometrica, Faculty of Humanities, "Sapienza" University of Rome, unpublished).
- Di Vita, A. 1986-1987
Atti della Scuola, *ASAtene* 64-65, 435-534.
- Di Vita, A. 1990
Camiro. Un esempio di urbanistica scenografica d'età ellenistica, in: *Akten des XIII Internationalen Kongresses für Klassische Archäologie, Berlin 1988*, Mainz am Rhein, 482-483.
- Di Vita, A. 1996a
La Scuola Archeologica Italiana di Atene e il Dodecaneso, in: Livadiotti & Rocco (eds.), XV-XX.
- Di Vita, A. 1996b
La topografia della città, in: Livadiotti & Rocco (eds.), 66-70.
- Drerup, H. 1969
Griechische Baukunst in geometrischer Zeit, *Archaeologia Homerica* II, Göttingen.
- Ducat, J. 1966
Les vases plastiques rhodiens archaïques en terre cuite, *Bibliothèque des Ecoles françaises d'Athènes et de Rome* 209, Paris.
- Ducati, P. 1923
Guida del Museo Civico di Bologna, Bologna.

- Ducati, P. 1924-1925
Due oreferie del Museo Civico di Bologna, *BdA* 18, 505-511.
- Dugas, C. & Rhomaios, C. 1934
Délos XV. Les vases préhelléniques et géométriques, Paris.
- Dumont, A. 1879
Note sur des bijoux d'or trouvés en Lydie (pl. IV, V), *BCH* 3, 129-130.
- Duplouy, A. 2015
Observations sur la plastique archaïque lydienne, in: S. Montel (ed.), *La sculpture gréco-romaine en Asie Mineure. Synthèse et recherches récentes*, Besançon, 79-101.
- Durrell, L. 1953
Reflections on a Marine Venus, London.
- Dyggve, E. 1960
Lindos. Fouilles de l'acropole 1902-1914 et 1952, III. *Le sanctuaire d'Athana Lindia et l'architecture lindienne*, Berlin.
- Dyson, S. L. 2008
In Pursuit of Ancient Pasts. A History of Archaeology in the Nineteenth and Twentieth Centuries, New Haven & London.
- Eaverly, M. A. 1995
Archaic Greek Equestrian Sculpture, Ann Arbor.
- Ebbinghaus, S. (ed.) 2014
Ancient Bronzes through a Modern Lens: Introductory Essays on the Study of Ancient Mediterranean and Near Eastern Bronzes, Cambridge MA.
- Eisner, R. 1991
Travelers to an Antique Land. The History and Literature of Travel to Greece, Ann Arbor.
- Eleftheriou, V. 2006
Νέες επεμβάσεις στο ναό της Λινδίας Αθηνάς, Αίτια- αποτελέσματα μιας ανακατασκευής, in: *Πρακτικά του Ιου Πανελληνίου Συνεδρίου της Εταιρείας Έρευνας και Προώθησης της Επιστημονικής Αναστήλωσης των Μνημείων*, Θεσσαλονίκη, 13-16.
- Eleftheriou, V. 2010
Ακρόπολη Λίνδου, Από τις ανασκαφές στις αναστηλώσεις, η περίοδος 1914-1938, in: Makris, E. (ed.), *Πρακτικά του ΙΣΤ' Πολιτιστικού Συνεδρίου Δωδεκανήσου, Δωδεκανησιακά Χρονικά ΚΕ'*, Ρόδος, 445-459.
- Eleftheriou, V. 2016
The Temple of Athena Lindia, The Identification of the Threshold and its Positioning on the Door Wall, in: Zambas, K. et al. (eds.), *ΑΡΧΙΤΕΚΤΩΝ, Honorary Volume for Professor M. Korres*, Αθήνα, 389-396.
- Eleftheriou, V. & Markou, A. 2012
The Acropolis of Lindos. The project of designing and enhancing of the archaeological site, *Thiasos* 1, 29-34.
- Eleftheriou, V. & Pikoula, M. 2002
Αναστηλωτικές εργασίες στην ακρόπολη της Λίνδου I. Η ελληνιστική Στοά Α, Αθήνα.
- Eleftheriou, V., Pikoula, M. & Kouzeli, K. 2015
Αναστηλωτικές εργασίες στην ακρόπολη της Λίνδου II. Ο Ναός της Λινδίας Αθηνάς, Αθήνα.
- Eliades, K. 1950
Η Χάλκη της Δωδεκανήσου, Αθήνα.
- Elm, S. 2003
Hellenism and Historiography: Gregory of Nazianus and Julian in Dialogue, *Journal of Medieval and Early Modern Studies* 33.3, 496-515.
- Elsner, J. 2012
Iconoclasm as Discourse: From Antiquity to Byzantium, *ArtB* 94, 368-394.
- Ersoy, Y.E. 2004
Klazomenai. 900-500 BC. History and Settlement Evidence, in: Moustaka, A., Skarlatidou, E., Tzannes, M.-C. & Ersoy, Y. E. (eds.), *Klazomenai, Teos and Abdera: Metropoleis and Colony*, Proceedings of the International Symposium held at the Archaeological Museum of Abdera, 20-21 October 2001, Abdera. Thessaloniki, 43-76.
- Essick, R.N. 1991
William Blake, Thomas Paine, and Biblical Revolution. *Studies in Romanticism* 30.2, 189-212.
- Farmakidou, E. 1998
Κάμειρος (αρχαιολογικός χώρος), *ADelt* 53, *Chronika*, 956.
- Farmakidou, E. 2004
Από τα νεκροταφεία της αρχαίας Ιαλυσού· δύο γεωμετρικές ταφές στην Κρεμαστή Ρόδου, in: Stampolidis, N.C. & Giannikouri, A. (eds.), *Το Αγαίο στην Πρώιμη Εποχή του Σιδήρου, Πρακτικά του Διεθνούς Συμποσίου, Ρόδος, 1-4 Νοεμβρίου 2002*, Αθήνα, 165-176.

- Faveretto, I. 2002
Arte antica e cultura antiquaria nelle collezioni venete al tempo della Serenissima, Roma.
- Feytmans, D. K. 1952
Les pithoi à reliefs de l'île de Rhodes (Addendum), *BCH* 76, 197-200.
- Ffolliott, S. 2015
Artemisia Conquers Rhodes: Problems in the Representation of the Female Heroics in the Age of Catherine de' Medici, in: McIver, K. A. & Stollhans, C. (eds.), *Patronage, Gender and the Arts in Early Modern Italy*, New York, 85-102.
- Filimonos-Tsopotou, M. 1980
Κάμειρος. Θαλαμοειδής τάφος στη θέση Κεχράκι, *ADelt* 35, *Chronika*, 546-547.
- Filimonos-Tsopotou, M. 2011
Pyrgousa, II. From the Geometric period to Late Antiquity, in: Stampolidis, Tassoulas & Filimonos-Tsopotou (eds.), 353-355, 362-401.
- Filimonos-Tsopotou, M. 2013
Πρώρα πολεμικού πλοίου από τη Νίσυρο, in: Giannikouri, A. (ed.) *Όλβιος Άνερ, Μελέτες στη μνήμη του Γρηγόρη Κωνσταντινόπουλου*, Αθήνα, 265-285.
- Finkielsztein, G. 2001
Chronologie détaillée et révisée des éponymes amphoriques rhodiens, de 270 à 108 av. J.C. environ. Premier bilan, *British Archaeological Reports. International Series*, 990, Oxford.
- Flandin, E. 1853
L'Orient par Eugène Flandin, Paris.
- Flandin, E. & Brunialti, A. 1912
L'isola di Rodi e le Sporadi, Milano.
- Fraser, P. M. 1977
Rhodian Funerary Monuments, Oxford.
- Friesen, S.J. 2005
Satan's Throne, Imperial Cults and the Social Setting of Revelation, *JNST* 27.3, 351-373.
- Friis, A. 1980
s.v. Gyldenstjerne, Mogens, *Dansk Biografisk Leksikon* 5, 3. udgave, København, 420-422.
- Frizzoni, G. 1884
Notizia d'opere di disegno pubblicata e illustrate da D. Jacopo Morelli, Bologna.
- Froehner, W. 1869
Catalogue des sculptures antiques du Musée du Louvre, Paris.
- Froehner, W. 1871
Deux peintures de vases grecs de la nécropole de Kameiros, Paris.
- Froehner, W. 1876
Anatomie des vases antiques, Paris.
- Froehner, W. 1893
Collection de feu M. Joly de Bammerville. Antiquités égyptiennes, grecques, romaines, etc., Paris.
- Fulinska, A. 2012
Oriental Imagery and Alexander's Legend in Art: Reconnaissance, in: Stoneman, R. et al. (eds.), *The Alexander Romance in Persia and the East*, *Ancient Narrative Supplements* 15, Groningen, 383-404.
- Furtwängler, A. 1884
Archaischer Goldschmuck, *AZ* 42, 99-114.
- Furtwängler, A. 1885
Beschreibung der Vasensammlung im Antiquarium, Berlin.
- Furtwängler, A. 1886
Erwerbungen der Königl. Museen zu Berlin im Jahre 1885, *Jdl* 1, 129-157.
- Furtwängler, A. & Loeschcke G. 1886
Mykenische Vasen: vorhellenische Thongefässe aus dem Gebiete des Mittelmeeres, Berlin.
- Furumark, A. 1941
The Mycenaean Pottery: Analysis and Classification, Stockholm.
- Gans, U. 1991
Die Grabung auf dem Zeytintepe, *IstMitt* 41, 137-140.
- Gates, C. 1979
Burials at Ialysos and Kameiros (Rhodes) in the Mid Archaic Period, ca. 625-525 B.C. (PhD diss., University of Pennsylvania, Ann Arbor, unpublished).
- Gates, C. 1983
From Cremation to Inhumation: Burial Practices at Ialysos and Kameiros During the Mid-Archaic Period, ca. 625-525 B.C., *Institute of Archaeology, University of California, Los Angeles Occasional Papers* 11.
- Gaultier, F. & Metzger, C. (eds.) 2005
Les bijoux de la collection Campana. De l'antique au pastiche. Actes du colloque international, École du Louvre, 10 janvier 2006, Paris.

- Georgius, D. 1723
Poggii Bracciolini Florentini Historiae varietate fortunae libri quatuor ex Ms. codice bibliothecae Ottobonianaе, Paris.
- Georgoula, E. (ed.) 1999
Greek Jewellery from the Benaki Museum Collections, Athens.
- Gerola, G. & Porro, G. G. 1913
Elenco degli edifici monumentali. LXXI (Appendice), Le tredici Sporadi, Roma.
- Gerola, G. 1914
I monumenti medievali delle tredici Sporadi (appunti di viaggio), *ASAtene I*, 169-356.
- Gercke, P. 1981
Funde aus der Antike. Sammlung Paul Dierichs Kassel, Kassel.
- Ghislanzoni, E. 1915
Notizie archeologiche sulla Cirenaica, *Notiziario archeologico* 1.1-2, 65-240.
- Giakoumaki, C. 2011
Halki, in: Stampolidis, Tassoulas & Filimonos-Tsopotou (eds.), 176-187.
- Giannikouri, A. 2014
Το έργο της στερέωσης και της αναστήλωσης των μνημείων της ακρόπολης της Αίνδου, in: Giannikouri, A. (ed.), Κοροπλαστική και μικροτεχνία στον αιγαιακό χώρο από τους γεωμετρικούς χρόνους έως και την ρωμαϊκή περίοδο. Διεθνές συνέδριο στη μνήμη της Ηούς Ζερβουδάκη. Ρόδος, 26-29 Νοεμβρίου 2009, I, Αθήνα, 25-54.
- Giannikouri, A., Patsiada, B., Filimonos, M. 1986
Ταφικά σύνολα από τις νεκροπόλεις της αρχαίας Ρόδου, in: *Α' Συνάντηση για την Ελληνιστική Κεραμική, Πρακτικά. Ιωάννινα, 6 Δεκέμβριου 1986*, Πανεπιστήμιο Ιωαννίνων, τομέας αρχαιολογίας, Ρόδος, 63-117.
- Gill, D. W. J. 1984
The Workshop of the Attic Bolsal, in: Brijder (ed.), 102-106.
- Gill, D. W. J. 1991
Greek Cult Tables, London.
- Gill, D. W. J. 2016
The Nostell Priory Bolsal, in: Boardman, Parkin & Waite (eds.), 83-94.
- Gjerstad, E. 1948
The Swedish Cyprus Expedition. Vol. IV, part 2. The Cypro-Geometric, Cypro-Achaic and Cypro-Classical Periods, Stockholm.
- Glahn, C & Poulsen N. M. (eds.) 2014
100 års øjeblikke. Kvindelige Kunstneres Samfund, København.
- Gläser, F. 1983
Antike Brunnenbauten (κρηναι) in Griechenland, Österreichische Akademie der Wissenschaften. Philosophisch-Historische Klasse. Denkschriften 161, Wien.
- Goette, H. R. & Palagia, O. (eds.) 2005
Ludwig Ross und Griechenland. Akten des Internationalen Kolloquiums Athen, 2.-3. Oktober 2002, Internationale Archäologie. Studia honoraria 24, Rahden.
- Grasso, L., Pappalardo, L. & Romano, F. P. 2004
In merito alla classe dei cosidetti aryballoi rodio-cretesi, in: Stampolidis, N. C. & Giannikouri, A. (eds), *Το Αιγαίο στην Πρώιμη Εποχή του Σιδήρου, Πρακτικά του Διεθνούς Συμποσίου. Ρόδος, 1-4 Νοεμβρίου 2002*. Αθήνα, 159-164.
- Gran-Aymerich, E. 2007
Les chercheurs du passé 1798-1945 naissance de l'archéologie moderne. Dictionnaire biographique d'archéologie, Paris.
- Greifenhagen, A. 1970
Schmuckarbeiten in Edelmetall, 1. Antikenabteilung Staatliche Museen zu Berlin, Berlin.
- Grigoriadou, A., Giannikouri, A. & Marketou, T. 2001
Καύσεις νεκρών από την Ιαλυσό, in: Stampolidis (ed.), 373-403.
- Guérin, V. 1856
Voyage dans l'île de Rhodos et description de cette île, Paris.
- Guérin, V. 1880
Île de Rhodes, Paris (seconde édition).
- Guggisberg, M. A. 1996
Frühgriechische Tierkeramik. Zur Entwicklung und Bedeutung der Tiergefäße und der hohlen Tierfiguren in der späten Bronze- und frühen Eisenzeit (ca. 1600-700 v. Chr.), Mainz.
- Guidotti, M. C. et al. (eds.) 2007
Egeo, Cipro, Siria e Mesopotamia. Dal collezionismo allo scavo archeologico. In onore di P.E. Pecorella, Firenze.

- Gunning, L. P. 2009
The British consular service in the Aegean and the collection of antiquities for the British Museum, Farnham.
- Guzzo, P. G. 1969
La collezione etrusca del Museo Nazionale di Atene, *StEtr* 37, 289-302
- Hackländer, N. 1997
Der Betende Knabe – Eine Antike auf Wanderschaft, in: Zimmer, G. & Hackländer, N. (eds.), *Der Betende Knabe. Original und Experiment*, Frankfurt am Main, 25-34.
- Hafner, G. 1952
Corpus Vasorum Antiquorum. Deutschland, Band 8, Karlsruhe, Badisches Landesmuseum Band II, Stuttgart.
- Halbertsma, R. B. 2003
Scholars, Travellers and Trade. The Pioneer Years of the National Museum of Antiquities in Leiden, 1818-1840, London.
- Halbherr, F. 1901
Lavori eseguiti dalla Missione Archeologica Italiana a Gortina e Lebena, Roma.
- Halm, C. 1994
Europäische Reiseberichte des späten Mittelalters. Eine analytische Bibliographie 1. Deutsche Reiseberichte, Frankfurt am Main.
- Halm, C. 2001
Europäische Reiseberichte des späten Mittelalters. Eine analytische Bibliographie 1. Deutsche Reiseberichte, 2nd edition, Frankfurt am Main.
- Hamilakis, Y. 2000
No laughing Matter: Antiquity in Greek Political Cartoons, *Public Archaeology* 1, 57-72.
- Hamilton, W. J. 1842
Researches in Asia Minor, Pontus, and Armenia; with Some Account of Their Antiquities and Geology II, London.
- Hansen, A. H. 2016
Niebuhr's Museum. Artefacts and Souvenirs from the Royal Danish Expedition to Arabia 1761-1767, København.
- Hansen, A. H. (ed.) 2017
Arrivals. The Life of the Royal Danish Expedition to Arabia 1767-2017, København.
- Hansen, A. H. & Rasmussen, S. T. 2005
Min Sundheds Forliis. Frederik Christian von Havens Rejsejournal fra Den Arabiske Rejse 1760-1763, København.
- Hansen, C. R. 1980
Sources of the History of North Africa, Asia and Oceania in Denmark, München, New York, London & Paris.
- Harth, H. 1984a
Poggio Bracciolini. Lettere I. Lettere a Niccolò Nicoli, Florence.
- Harth, H. 1984b
Poggio Bracciolini. Lettere II. Epistolarum familiarum libri, Florence.
- Hasecker, J. 2008
Die Johanniter und die Wallfahrt nach Jerusalem (1480-1522), Göttingen.
- Hatzivassiliou, E. 2010
Athenian Black Figure Iconography between 510 and 475 B.C., *Tübinger archäologische Forschungen* 6. Rahden.
- Haugsted, I. 1996
Dream and Reality: Danish Antiquaries, Architects and Artists in Greece, London.
- Hayes, J. W. 1984
Greek and Italian Black-Gloss Wares and Related Wares in the Royal Ontario Museum. A Catalogue, Toronto.
- Hayes, J. W. 2008
The Athenian Agora XXXII. Roman Pottery: fine ware imports, Princeton.
- Haynes, D. E. L. 1957
Philo of Byzantium and the Colossus of Rhodes, *JHS* 77, 311-312.
- Haywood, I. 2012
Paper Promises: Restriction, Caricature, and the Ghost of Gold, in: Haywood, I. (ed.), *Romanticism, Forgery and the Credit Crunch. A Romantic Circles Praxis Volume*, A Refereed Scholarly Website Devoted to the Study of Romantic-Period Literature and Culture. URL: www.rc.umd.edu (accessed November 2018).
- Hedenborg, J. 1854
Geschichte der Insel Rhodos von der Urzeit bis auf die heutigen Tage, KB' Εφορεία Προϊστορικών και Κλασικών Αρχαιοτήτων, Mss. KK 5090-5094.
- Heiberg, J. L. 1922
Biographie de K.F.Kinch. *Bulletin de l'academie royale des sciences et des lettres de Danmark* 1921-1922, 37-45.

- Heilmeyer, W.-D. 1982
Frühgriechische Kunst. Kunst und Siedlung im geometrischen Griechenland, Berlin.
- Heilmeyer, W.-D. 1999
ΘΕΟΙΣ ΠΑΣΙ – Rhodes, Pergamon und Rom, in: Kypraiou, E. & Zapheirou, D. (eds.), *Ρόδος 2400 χρόνια. Η πόλη της Ρόδου από την ίδρυσή της μέχρι την κατάληψη από τους Τούρκους (1523). Διεθνές Επιστημονικό Συνέδριο. Ρόδος, 24-29 Οκτωβρίου 1993, Πρακτικά, τόμος Α'*, Αθήνα, 83-88.
- Heimberg, U. 1976
Oinophoren. Zur kaiserzeitlichen Reliefkeramik, *JdI* 91, 251-290.
- Heinrich, F. 2006
Das Epinetron. Aspekte der weiblichen Lebenswelt im Spiegel eines Arbeitsgeräts, Internationale Archäologie 93, Rahden.
- Heliopoulou, S. 2015
Αρχαία Ζώνη IIIα. Το νεκροταφείο. Ταφικά έθιμα και πρακτικές, Κομοτηνή.
- Helk, V. 1987
Dansk-norske Studierejser fra reformationen til enevælden 1536-1660. Med en matrikel over studerende i udlandet, Odense.
- Hébrard, E. 1911
Le palais de Dioclétien à Spalato. Notice de M. Jacques Zeiller. Paris.
- Hermansen, V. 1951
Fra Kunstammer til Antik-Cabinet, in: *Antik-Cabinettet 1851. Udgivet i Hundredaaret af Nationalmuseet*, København, 9-56.
- Higgins, R. A. 1954
Catalogue of the Terracottas in the Department of Greek and Roman Antiquities, British Museum, I. Greek: 730-330 BC, London.
- Higgins, R. A. 1960
Catalogue of the Terracottas in the Department of Greek and Roman Antiquities, British Museum, II, London.
- Higgins, R. A. 1961
Greek and Roman Jewellery, London.
- Higgins, R. A. 1967
Greek Terracottas, London.
- Higgins, R. 1988
The Colossus of Rhodes, in: Clayton, P. A. & Price, M. (eds.), *The Seven Wonders of the ancient World*, London, 124-137.
- Hiller von Gaertringen, F. 1895
Inscriptiones Graecae. Vol. XII. *Inscriptiones insularum maris Aegaei praeter Delum. Fasc. 1. Inscriptiones Rhodi, Chalces, Carpathi cum Saro, Casi*, Berlin.
- Hiller von Gaertringen, F. 1896
Inscripfen aus Rhodos, *AM* 21, 56-60.
- Hiller von Gaertringen, F. 1901
Inscripfen aus Rhodos, *ÖJh* IV, 159-168.
- Hiller von Gaertringen, F. 1917
Die Deme der rhodischen Städte, *AM* 42, 171-184
- Hiller von Gaertringen, F. 1931
s.v. Rhodos, *RE*, Suppl. V, 731-840.
- Hirschbiegel, J. & Kraack, D. 2000
Europäische Reiseberichte des Späten Mittelalters. Eine analytische Bibliographie. 3. Niederländische Reiseberichte, Frankfurt am Main.
- Hoepfner, W. 1999
Vroulia. Eine Streifenstadt auf Rhodos, in: *Geschichte des Wohnens, 1. 5000 v.Chr. – 500 n.Chr. Vorgeschichte, Frühgeschichte, Antike*. Stuttgart, 194-199.
- Hoepfner, W. 2001
Zum Arsineion auf Samothrake, *AA*, 467-480.
- Hoepfner, W. 2003
Der Koloss von Rhodos und die Bauten des Helios. Neue Forschungen zu einem der sieben Weltwunder, Mainz am Rhein.
- Hofmann, H. 1904
Aus Südwestdeutschen Museen I. Colmar. A. Salzmanns Funde in Kamiros, *AA* 19, 1904, 47-60.
- Hölbl, G. 2016
Die ägyptische Götterwelt in den rhodischen Votivdepots von Kameiros, in: Lippert, S. L. et al. (eds.), *Sapientia Felicitas. Festschrift für Günter Vittmann*, Montpellier, 217-254.
- Hvidt, K. 2017
Marie Henriques som kunstner og menneske. *Kvindelige Kunstneres Samfund*. URL: <http://www.kks-kunst.dk/wp-content/uploads/2016/10/MarieHenriques20170126.pdf> (accessed January 2019).

- Høgh-Jensen, N. 2014
"Her er hverken tale om en mand eller en kvinde – jeg er kunstner", in: Glahn & Poulsen (eds.), 62-75.
- Inglieri, R. U. 1936
Carta archeologica dell'isola di Rodi, Florence.
- Iozzo, M. 2002
La Collezione Astarita nel Museo Gregoriano Etrusco, II, 1. Ceramica attica a figure nere, Città del Vaticano.
- Işik, F. 1980
Die Koroplastik von Theangela in Karien und ihre Beziehungen zu Ostionien zwischen 560 und 270 v. Chr. IstMitt, Beiheft 21, Tübingen.
- Jacopi, G. 1929
Scavi nella necropolis di Jalisso 1924-1928, *Clara Rhodos III*, Bergamo.
- Jacopi, G. 1931a
Esplorazione archeologica di Camiro I. Scavi nelle necropoli camiresi 1929-1931, *Clara Rhodos IV*, Rodi.
- Jacopi, G. 1931b
Recenti scavi nelle isole italiane dell'Egeo, *Historia* 5, 467-479.
- Jacopi, G. 1932a
La necropoli di Pontamo (Chalki), *Clara Rhodos II*, 117-164.
- Jacopi, G. 1932b
Monumenti di scultura del Museo Archeologico di Rodi, *Clara Rhodos V2*, Bergamo.
- Jacopi, G. 1932-1933
Esplorazione archeologica di Camiro II - Necropoli, Acropoli, *Clara Rhodos VI-VII*, Bergamo.
- Jasink, A. M. 2009
Le civiltà egee e le collezioni fiorentine, in: Jasink & Bombardieri (eds.) 2009, 1-9.
- Jasink, A. M. 2011
La nascita delle collezioni egee e cipriote del museo archeologico nazionale di Firenze, in: *Musint: le collezioni archeologiche egee e cipriote in Toscana, ricerche ed esperienze di museologia interattiva*, 7-22.
- Jasink, A. M. & Bombardieri, L. (eds.) 2009
Le collezioni egee del Museo Archeologico Nazionale di Firenze, Florence.
- Jenkins, I. 1992
Archaeologists and Aesthetes in the Sculpture Galleries of the British Museum 1800-1939, London.
- Jerichau-Baumann, E. 1881
Brogede Rejsebilleder, København.
- Johansen, K. F. 1958
Exochi. Ein frührhodisches Gräberfeld, *ActaArch* 28, 1-192.
- Johnston, A. 2017
The Writing is on the Handle. The History of Amphora Stamps at the British Museum, in: Phantaoutsaki, C. (ed.), *Protection and Enhancement of Cultural Heritage. The Case of Transport Amphorae. Proceedings of the Scientific Conference Rhodes, 30 September 2017*, Rhodes, 153-165.
- Johnston, S. I. 2008
Animating Statues: A Case Study in Ritual, *Arethusa* 41, 445-477.
- Kadioğlu, M., Özbil, C., Kerschner, M. & Mommsen, H. 2015
Teos im Licht der neuen Forschungen, in: Yalçın, Ü. & Bienert, H.-D. (eds.), *Anatolien – Brücke der Kulturen. Aktuelle Forschungen und Perspektiven in den deutsch-türkischen Altertumswissenschaften, Tagungsband des Internationalen Symposiums in Bonn, vom 7. bis 9. Juli 2014*, Bochum & Bonn, 345-366.
- Kaninia, E. 1994-1995
Χρυσά στεφάνια από τη νεκρόπολη της αρχαίας Ρόδου, *ADelt* 48-49 [1998], *Meletes*, 97-132.
- Kaninia, E. 2011
Tilos, II. From the Geometric Period to Late Antiquity, in: Stampolidis, Tassoulas & Filimonos-Tsopotou (eds.), 261-294, nos. 28-72.
- Kaninia, E. & Schierup, S. 2017
Vroulia revisited: From K.F. Kinch's excavations in the early 20th century to the present archaeological site, *ProcDanInstAth* 8, 89-129.
- Karafagka, S. et al. 2016
Ακρόπολη Λίνδου. Απόκριση και ευστάθεια πολυσπόνδου ιωνικού κίονα υπό σεισμική φόρτιση και ανεμοπίεση, in: *Πρακτικά του 4ου Πανελληνίου Συνεδρίου της Εταιρείας Έρευνας και Προώθησης της Επιστημονικής Αναστήλωσης των Μνημείων*, Θεσσαλονίκη, 791-804.
- Karageorghis, V. 1998
The Coroplastic Art of Ancient Cyprus V. The Cypro-Achaic Period. Small Female Figurines, Part A. Handmade/Wheelmade Figurines, Nicosia.

- Karageorghis, V. 2010
Ancient Cypriot Art in the Leto and Costakis Severis Collection, Nicosia.
- Karakasi, K. 2001
Archaische Koren, München.
- Karametrou-Menteside, G. 2008
Aiani. A guide to the archaeological site and the museum, Aiane.
- Karanassos, K. 2009
The politics for urban planning and monument management in the City of Rhodes during the Italian occupation 1912-1947: the case of the Hospital of Knights and the surrounding area. URL: <http://mondesanciens.revues.org/1087> (accessed November 2018).
- Katz, M. 2014
De kvindelige kunstneres historie ud af glemslen, *Billedkunstneren* 3. København.
- Käufler, S. 2004
Die archaischen Kannen von Milet (PhD diss., Ruhr-Universität Bochum, URL: <https://hss-opus.ub.ruhr-uni-bochum.de/opus4/files/802/diss.pdf>).
- Kearsley, R. 1989
The Pendent Semi-Circle Skyphos. A Study of its Development and Chronology and an Examination of it as Evidence for Euboian Activity at Al Mina, *BICS*, Suppl. 44, London.
- Kerschner, M. & Schlotzhauer, U. 2005
A new classification system for east Greek pottery, *AWE* 4.1, 1-56.
- Kerschner, M. & Prochaska, W. 2011
Die Tempel und Altäre der Artemis in Ephesos und ihre Baumaterialien, *ÖJh* 80, 73-154.
- Kiely, T. 2010
Charles Newton and the Archaeology of Cyprus, *CahCEC* 40.1, 231-251.
- Kilmer, M. 1977
The Shoulder Bust in Sicily and South and Central Italy. A Catalogue and materials for dating, Göteborg.
- Kinch, H. 1916
En ny Kvindeorganisation, *Kvinden og Samfundet* 35.5, 71.
- Kinch, K. F. 1907
Quatrième Rapport, in: Blinkenberg, C. & Kinch, K. F., *Exploration archéologique de Rhodes* (Fondation Carlsberg), København.
- Kinch, K. F. 1914
Fouilles de Vroulia, Berlin.
- Kirby, M. L. 1916
Necrologio di Gian Giacomo Porro, *The Theosophist* 37, 233.
- Koch, H. 1983
s.v. Sven Normand, *Dansk Biografisk Leksikon* 14, 3. udgave, København, 244-245.
- Koch, A. S. 2015
Far from the Fountain: Inscriptions on Bronze *Hydriai* and the Uses of Water Jars in Ancient Greece, *BABESCH* 90, 13-42.
- Koeppen, A. L. 1855
V. A Day on the Island of Rhodes, *Mercersburg Quarterly Review* 7, 337-361.
- Kokkou, A. (ed.) 1993
Ancient Rhodes 2400 Years, Athens.
- Kondis, J. D. 1963
Review of Lindos III, Le sanctuaire d'Athana Lindia, *Gnomon* 35, 392-404.
- Konstantinopoulos, G. [s.d.]
Philerimo Ialysos-Kamiros (Guide, Apollo Editions).
- Konstantinopoulos, G. 1968
Ἀρχαιότητες καὶ μνημεῖα Δωδεκανήσου, *ADelt* 23, B'2, 432-449.
- Konstantinopoulos, G. 1972
Ο Ροδιακός κόσμος I, Λίνδος, Αθήνα.
- Konstantinopoulos, G. 1986
Αρχαία Ρόδος. Επισκόπηση της ιστορίας και τέχνης, Αθήνα.
- Koster, D. 1996
Colonel Rottiers, Greek Antiquities, and Greek Provisional Law, *Pharos* 4, 21-42.
- Kostomitsopoulos, P. 1988
Lindian Sacrifice. An Evaluation of the Evidence Based on new Inscriptions, in: Dietz & Papachristodoulou (eds.), 121-128.
- Kotsonas, A. 2008
The Archaeology of Tomb A1K1 of Orthi Petra in Eleutherna. The Early Iron Age Pottery, Athens.
- Kourou, N. 1997
Cypriot zoomorphic askoi of the early Iron Age. A Cypro-Aegean interplay, in: Karageorghis, V., Laffineur, R. & Vandenabeele, F. (eds.) *Four Thousand Years of Images on Cypriote Pottery*, Brussels, Liège & Nicosia, 89-106.

- Kourou, N. 2003
Rhodes. The Phoenician Issue Revisited. Phoenicians at Vroulia? in: Stampolidis, N. & Karageorghis, V. (eds.), *Πλοεσ. Sea Routes... Interconnections in the Mediterranean, 16th-6th c. BC, Proceedings of the International Symposium held at Rethymnon, Crete, September 29th - October 2nd, 2002*, Athens, 249-262.
- Kourou, N. 2005
Early Iron Age Greek Imports to Italy, in: Bartoloni, G. & Delpino, F. (eds.), *Oriente e Occidente: metodi e discipline a confronto. Riflessioni sulla cronologia dell'Età del Ferro in Italia, Mediterranea 1* (2004), Pisa and Roma, 497-515.
- Kourou, N. 2014
Rhodes, un important carrefour en Méditerranée orientale, in: Coulié & Filimonos-Tsopotou (eds.), 76-88.
- Kourou, N. et al. 2002
Limestone Statuettes of Cypriot Type Found in the Aegean. Provenance Studies, Nicosia.
- Kragelund, M. 2013
Helvig Kinch – første formand for Kvindelige Kunstneres Samfund. URL: <http://www.kks-kunst.dk/wp-content/uploads/2016/10/Helvig-Kinch-netartikel-2-af-Minna-Kragelund.pdf> (accessed 28 January 2019).
- Kramer, P. A. 2006
Race-Making and Colonial Violence in the U.S Empire: The Philippine-American War as Race War, *Diplomatic History* 30(2), 169-210.
- Kreitzer, L. 1988
Hadrian and the Nero Redevivus Myth, *ZNW* 79(1-2), 92-115.
- Kunisch, N. 1971
Corpus Vasorum Antiquorum. Deutschland, Berlin, Antiquarium, Band 4, Deutschland Band 33, München.
- Kunisch, N. 2006
Anstelle eines Hafenzwölfen... Zu einem Korinthischen Salbgefäß, in: Biering, R. et al. (eds.), *Maiandros. Festschrift für Volkmar von Graeve*, München, 191-199.
- Labanca, N. 2009
La Scuola Archeologica di Atene nell'ambito della politica estera italiana tra XIX e XX secolo, *ASAtene* 87, Serie III, 9 [2010], Tomo I, 17-40.
- Laffineur, R. 1978
L'orfèvrerie rhodienne orientalisante, Paris.
- Laganà, D. L. & Hordynsky-Caillat, L. 1987
Sur les mers grecques: un voyageur florentin du XV^e siècle, Francesco Buondelmonti, *Médiévales* 12, 67-77.
- Lambrino, S. 1931
Corpus Vasorum Antiquorum. Paris. Bibliothèque Nationale (Cabinet des Médailles) 2, France 10, Paris.
- Lang, F. 1996
Archaische Siedlungen in Griechenland. Struktur und Entwicklung, Berlin.
- La Rosa, V. (ed.) 1986
L'archeologia italiana nel Mediterraneo, fino alla seconda guerra mondiale, Catania.
- Larsen, C. 1916
Katalog NR. 49, November 1916. Fortegnelse over Malerier, Tegninger og Skulpturer af Helvig Kinch Udstillede hos Kunsthandler Chr. Larsen, Højbroplads 9, 1.sal, København.
- Lattek, C. 2006
Revolutionary Refugees: German Socialism in Britain, 1840-1860, London and New York.
- Laulund, M. 2014
Pionergenerationen. Da Kvindelige Kunstneres Samfund blev til, in: Glahn & Poulsen (eds.), 20-45.
- Laurenzi, L. 1936a
Attività del Servizio Archeologico nelle isole italiane dell'Egeo nel biennio 1934-35, *BdA XXX*, 129-148.
- Laurenzi, L. 1936b
Necropoli ialisie (scavi dell'anno 1934), *Clara Rhodos VIII*, Rodi, 7-207.
- Laurenzi, L. 1938a
I restauri sull'acropoli di Lindo, Memorie dell'Istituto Storico-archeologico, F.E.R.T., II.
- Laurenzi, L. 1938b
I restauri del santuario di Atena Lindia (II relazione preliminare), Memorie dell'Istituto F.E.R.T., III.
- Lauter, H. 1982
Struktur statt Typus. Zu einem hellenistischen Architekturmotiv, *AA* 1982, 703-724.
- Leake, W. M. 1824
Journal of a Tour in Asia Minor with Comparative Remarks on the Ancient and Modern Geography of that Country, London.

- Legrand, L. 1895
Relation du pèlerinage à Jérusalem de Nicolas de Martoni, notaire italien (1394-1395), *ROL* 3, 566-669.
- Lemos, I. S. 2002
The Protogeometric Aegean. The Archaeology of the Late Eleventh and Tenth Centuries BC, Oxford.
- Lentini, M. C. (ed.) 2008
Vasi del Wild Goat Style dalla Sicilia e dai Musei Europei. Catalogo della mostra. Gela, Museo archeologico regionale, 27 aprile - 21 maggio 2006. Bochum, Kunstsammlung der Ruhr-Universität, 30 maggio - 15 luglio 2006, Siracusa.
- Levi, D. 1926
Il R. Museo Archeologico di Firenze nel suo future ordinamento, in: *Atti del Primo Convegno Nazionale Etrusco (Firenze, 27 aprile-4 maggio 1926)*, Firenze, 37-56
- Livadiotti, M. 1996a
Appendice documentaria, in: Livadiotti & Rocco (eds.), 189-208.
- Livadiotti, M. 1996b
L'isola di Rodi, Storia degli scavi, in: Livadiotti & Rocco (eds.), 7-12.
- Livadiotti, M. & Rocco G. (eds.) 1996
La presenza italiana nel Dodecaneso tra il 1912 e il 1948. La ricerca archeologica, la conservazione, le scelte progettuali. Catania.
- Lippolis, E. 1993
Il santuario di Athana a Lindo, *ASAtene* 66-67, 97-157.
- Lippolis, E. 1996
Lindo. L'acropoli. La riscoperta archeologica e il restauro, in: Livadiotti & Rocco (eds.), 52-59.
- Loeschcke, G. 1880
Vasenbilder aus Kameiros, *AM V*, 380-383.
- Loeschcke, G. 1881
Mitteilungen aus Kameiros, *AM VI*, 1-9.
- Lund, J. 2015
A Study of the Circulation of Ceramics in Cyprus from the 3rd Century BC to the 3rd Century AD, Aarhus.
- Lund, J. 2017
Kolossen på Rhodos, in: Saxkjær, S. G. & Mortensen, E. (eds.), *Antikkens 7 vidundere*, Aarhus, 131-147.
- Lüth, C. 1926
Fra Fredensborg til Athen. Fragment af en Kvindes Liv, in: Clausen, J. & Rist, P. F. (eds.), *Memoirer og Breve XLVIII*, Kjøbenhavn.
- Lüth, C. 1988
Μιά Δανέζα στην αυλή του Όθωνα. Μαρτυρία της εποχής, Β έκδοση, Αθήνα.
- Lüth, C. 1991
Στήν Αθήνα τον 1847-1848. Ένα ανέκδοτο ημερολόγιο, Αθήνα.
- Lüth, C. 1999
Αρμενιζόντας. Πέντε ταξίδια στο Αιγαίο 1845-1851, Αθήνα.
- Lüth, C. 2013
Eine Dänin am Hof König Ottos. Ein Zeugnis der Epoche, Athen.
- Luttrell, A. 1960
Greek Histories Translated and Compiled for Juan Fernández de Heredia, Master of Rhodes, 1377-1396, *Speculum* 35.3, 401-407.
- Luttrell, A. 2003
The Town of Rhodes, 1306-1356, Rhodos.
- Luzio, A. 1886
Lettere inedite di fra Sabba da Castiglione, *Archivio storico Lombardo* 3 [s. 2], 91-112.
- Ma, J. 2010
Autour des balles de fronde "camiréennes", *Chiron* 40, 155-173.
- Machaira, V. 2011
Ελληνιστικά γλυπτά της Ρόδου, Athens.
- Madsen, E. 1909-1910
De vigtigste af danske foretagne Rejser og Forskninger i Asien, Geografisk Tidsskrift 20, 111-117.
- Madsen, P. K. & Arneborg, J. forthcoming
The Odyssey of a Saint, in: Petersen, N. H. et al. (eds.), *ORA PRO NOBIS. Space, Place and the Practice of Saints' Cults in Medieval and Early Modern Scandinavia.*
- Maillis, A. S., Skandalidis, K. E. & Tsalachouris, K. F., 2002
Η Ρόδος τον 19^ο αιώνα, Θυμέλη / TEΔΚ, Αθήνα.
- Maiuri, A. 1916
Lavori della Missione Archeologica Italiana a Rodi, *ASAtene* 2, 271-302.

- Maiuri, A. 1916-1920
Lavori della Missione Archeologica Italiana a Rodi, *ASAtene* 3 (1921), 252-262.
- Maiuri, A. 1923-1924
Jalissos. Scavi della missione archeologica italiana a Rodi, *ASAtene* 6-7, 83-341.
- Maiuri, A. 1924
Una fabbrica di anfore Rodie, *ASAtene* 4-5, 248-269.
- Maiuri, A. 1928
Restauro al castello di Lindo, *Clara Rhodos* 1, Rodi.
- Maiuri, A. 1958
Vita d'Archeologo. Cronache dell'archeologia napoletana, Napoli.
- Maiuri, A. 1962
Dall'Egeo al Tirreno, Napoli.
- Maiuri, A. 1978
A Camiro e Jaliso. Con Agapito eversore di necropoli, in: *Amedeo Maiuri. Mestiere d'archeologo. Anthologia di scritti a cura di Carlo Belli*, 27-32.
- Maiuri, A. & Jacopich, G. 1928
Rapporto generale sul servizio archeologico a Rodi e nelle isole dipendenti dall'anno 1912 all'anno 1927, *Clara Rhodos* I. Rodi.
- Mandel, U. 1988
Kleinasiatische Reliefkeramik der mittleren Kaiserzeit. Die Oinophorengruppe und Verwandtes, Pergamenische Forschungen 5, Berlin.
- Mandel, U. & Gossel-Raeck, B. 2004
Votivterrakotten von der pergamenischen Oberburg, *IstMitt* 54, 311-329.
- Mangani, E. 2005-2007
Materiali micenei, geometrici e orientalizzanti di Rodi, *BPI* 96, 203-310.
- Mangani, E. 2012
La bambolina di Kamiros, in: *Forma Urbis Mensile Archeologico*, numero di marzo, Roma, 37-38.
- Mansuelli, G. A. 1958
Sculture antiche degli Uffizi, Milan.
- Manthos, D. A. 2008
Black was the Night. The Greek Nation as seen by Foreign Travellers (1453-1821), Athens.
- Manusaki, E. 2018
The Phenomenon of Illegal Excavations and Looting of Cultural Resources from the Area of Kymissala, in: Stefanakis (ed.) 2018, 111-117.
- Maran, J. 2006
Coming to Terms with the Past. Ideology and Power in Late Helladic IIIC, in: Deger-Jalkotzy, S. & Lemos, I. S. (eds.), *Ancient Greece. From the Mycenaean Palaces to the Age of Homer*, Edinburgh, 123-150.
- Mariani, L. 1916
Gian Giacomo Porro. Necrologio, *Notiziario archeologico del Ministero delle Colonie* 2, 1-4.
- Markou, A. & Pikoula, M. 2016
Αποκατάσταση του δυτικού οπίσθιου τοίχου της ελληνιστικής στοάς στην ακρόπολη Λίνδου στη Ρόδο, in: *Πρακτικά του Πανελληνίου Συνεδρίου της Εταιρείας Έρευνας και Προώθησης της Επιστημονικής Αναστήλωσης των Μνημείων*, Θεσσαλονίκη, 775-790.
- Marlow, E. 2006
Framing the Sun: The Arch of Constantine and the Roman Cityscape, *The Art Bulletin* 88(2), 223-242.
- Marshall, F. H. 1911
Catalogue of the Jewellery, Greek, Etruscan, and Roman, in the Department of Antiquities, British Museum, London.
- Martignago, S. C. 1995
Un aspetto della archeologia ottocentesca. Pelagio Palagi ed Eduard Gerhard, Imola.
- Martinoli S. & Perotti E. 1999
Architettura coloniale italiana nel Dodecaneso (1912-1943), Fondazione Agnelli, Torino.
- Maryon, H. 1956
The Colossus of Rhodes, *JHS* 76, 68-86.
- Massar, N. & Verbanck-Pierard, A. 2013
Follow the scent... Marketing Perfume Vases in the Greek World, in: Tsingarida, A. & Viviers, D. (eds.), *Pottery Markets in the Ancient Greek World (8th-1st centuries B.C.)*, *Études d'archeologie* 5, 285-287.
- Massei, L. 1978
Gli askoi a figure rosse nei corredi funerari delle necropoli di Spina, Milano.

- Maurina, B. & Sorge, E. (eds.) 2010
Orsi, Halbherr, Gerola. L'archeologia italiana nel Mediterraneo, Rovereto.
- Maximova, M. I. 1927
Les vases plastiques dans l'antiquité, Paris.
- Mayer, L. 1803
Views in the Ottoman Empire, London.
- McFarlane, R. I. 2007
Historiography of Selected Works on Cecil John Rhodes (1853-1902), *History in Africa* 34, 437-446.
- McLean, T. 2012
The Other East and Nineteenth-Century British Literature. Imagining Poland and the Russian Empire, London.
- Mee, C. 1982
Rhodes in the Bronze Age. An Archaeological Survey, Warminster.
- Meek, A., Bouquillon, A., Lehuédé, P., Masson, A., Villing, A., Pierrat-Bonnefois, G. & Webb, V. 2016
Discerning Differences: Ion Beam Analysis of Ancient Faience from Naukratis and Rhodes, in: Pacheco, C. & Boutaine, J.-L. (eds.), *From Eu-arche to Charisma and Iperion: European Research Programmes on Cultural Heritage. Assessment of the TransNational Accesses, TECHNE: La science au service de l'histoire, de l'art et des civilisations*, vol. 43, Paris, 94-101.
- Melander, T. 1988
Vroulia: Town Plan and Gate, in: Dietz & Papachristodoulou (eds.), 82-87.
- Meyer, G. 2017
Antoine Galland antiquaire: l'apport de ses voyages au Levant, in: Filliozat, P.-S. & Zink, M. (eds.), *Actes du colloque organisé par l'Académie, la Société asiatique et l'INALCO, les 3 et 4 décembre 2015*, Paris, 71-102.
- Mézin, A. 1997
Les consuls de France au siècle des Lumières (1715-1792), Paris.
- Milanese, A. 2005
Pierre-Louis-Jean-Casimir, duc de Blacas (1771-1839), collectionneur et mécène entre Florence, Rome, Naples et Paris, in: M. Preti-Hamard & P. Sénéchal (eds.), *Collections et Marché de l'Art en France, 1789-1848*, Rennes, 327-347.
- Milani, L.A. 1898
Museo Topografico dell'Etruria, Firenze/Roma.
- Milani, L. 1912
Il Reale Museo Archeologico di Firenze, Firenze.
- Miller, B. M. 2011
The Image-Makers' Arsenal in an Age of War and Empire, 1898-1899: A Cartoon Essay, Featuring the Work of Charles Bartholomew (of the "Minneapolis Journal") and Albert Wilbur Steele (of the "Denver Post"), *JAmStud* 45(1), 53-75.
- Miskowiak, J. 2018
Elisabeth Jerichau Baumann – nationalromantikkens enfant terrible, Frederiksberg.
- Mitchell, C. & Bodnar, E.W. 1996
Vita viri clarissimi et famosissimi Kyriaci Anconitani by Francesco Scalamonti. *TransactAmPhilosSoc* 86.4.
- Monaco, M. C. 2004
Ρόδος 1899-1912. Παράνομες ανασκαφές και συμβολή στη μελέτη του υλικού. Στοιχεία αρχείου και κεραμική από το Αρχαιολογικό Μουσείο της Φλωρεντίας, in: Damaskos, D. (ed.), *Χάρις Χαίρε. Μελέτες στην μνήμη της Χάρις Κάντζια*, Αθήνα, 73-80.
- Monaco, M. C. 2007
Dal Dodecaneso a Firenze. I materiali di età arcaica e classica, in: Guidotti *et al.* (eds.), 108-131.
- Monaco, M. C. 2014a
Dalle necropoli di Kechraki (Camiro) al Museo Archeologico di Firenze. Una nuova anfora Plakettensvasen, in: Baldelli G. & Lo Schiavo, F. (eds.), *Amore per l'antico. Dal Tirreno all'Adriatico, dalla Preistoria al Medioevo ed oltre. Studi in onore di Giuliano de Marinis*, Roma, 319-328.
- Monaco, M. C. 2014b
Les fouilles clandestines au XIXe et au début du XXe siècles, in: Coulié & Filimonos-Tsopotou (eds.), 36-42.
- Moore, J. 2018
George Cruikshank and the British Satirical Response to the Hundred Days, in: Astbury, K. & Philip, M. (eds.), *Napoleon's Hundred Days and the Politics of Legitimacy, War, Culture and Society, 1750-1850*, London, 255-273.
- Morelli, D. 1959
I culti in Rodi, *StC/OR* VIII, Pisa.
- Morricone, M. L. 1979-1980
Vasi della Collezione Akavi di Rodi, *ASAtene* 41-42, [1986], 217-342.

- Morris, I. 1992
Death-Ritual and Social Structure in Classical Antiquity, Cambridge.
- Müller, V. 1929
Frühe Plastik in Griechenland und Vorderasien. Ihre Typenbildung von der neolithischen bis in die griechisch-archaische Zeit, Augsburg.
- Munk, J. P. 1995
Jerichau, Nicolai Harald, in: *Weilbach Dansk Kunstnerleksikon*, vol. 4, København, 127-128.
- Murray, A. S. 1900
Erwerbungen des Ashmolean Museum zu Oxford, AA, 113-115.
- Muringaniza, S. J. 2011
Heritage that hurts. The case of the grave of Cecil John Rhodes in the Matopos National Park, Zimbabwe, in: Fforde, C., Hubert, J. & Turnbull, P. (eds.), *The Dead and their Possessions. The Repatriation in principle, policy and practice*, New York, 317-324.
- Nadalini, G. 1998
La collection Campana au musée Napoléon III et sa première dispersion dans les musées français (1862-1863), *JSav* 2, 183-225.
- Nasini, A. 2013
The Prince of Wales as a Collector of Antiquities, in: Gordon, S. (ed.), *Cairo to Constantinople: Francis Bedford's Photographs of the Middle East*, London, 55-67.
- Neeft, C. W. 1987
Protocorinthian Subgeometric Aryballoi, Amsterdam.
- Neuman, S. 2016
Grotten in der hellenistischen Wohnkultur, Marburg.
- Newton, C. T. 1864
The Camirus Vase, *Fine Arts Quarterly Review* 1(2), 1-8.
- Newton, C. T. 1865
Travels and Discoveries in the Levant, vol. I, London.
- Newton, C. T. 1883
The Collection of Ancient Greek Inscriptions in the British Museum, Part II, Oxford.
- Nicolini, G. 1990
Techniques des ors antiques. La bijouterie ibérique du VI^e au IV^e siècle, Paris.
- Niebuhr, C. 2003
Rejsebeskrivelse fra Arabien og andre omkringliggende lande I, København.
- Nilsson, M. P. 1909
Timbres amhoriques de Lindos. Publiés avec une étude sur les timbres amhoriques rhodiens, Copenhagen.
- Nizzo, V. 2008
Ritorno ad Ischia. Dalla stratigrafia della necropoli di Pithekoussai alla tipologia dei materiali, *Collection du Centre Jean Bérard* 26, Naples.
- Nordquist, G. 2013
Each in its Right Place. The Placing of Votives at the Early Temples at Tegea, in: Schallin, A.-L. (ed.), *Perspectives on Ancient Greece*, Athens, 103-112.
- Núñez Calvo, F. J. 2008
Phoenicia in Sagona, C. (ed.), *Beyond the Homeland: Markers in Phoenician Chronology*, Leuven, Paris & Dudley, MA, 19-95.
- Núñez Calvo, F. J. 2014
Tyrian potters and their products: standardization and variation in the pottery of the Al-Bass cemetery, in: Kotsonas, A. (ed.), *Understanding Standardization and Variation in Mediterranean Ceramics Mid 2nd to Late 1st Millennium BC*, BABESCH. *Annual Papers on Mediterranean Archaeology. Supplement* 25, Leuven, 59-84.
- Nygaard, G. 1919
Review of K. F. Kinch. Dessins de Helvig Kinch. Fouilles de Vroulia. Avec une Carte, 47 Planches et 139 Figures dans la Texte. Berlin 1914, *Skoenvirke* [periodical published by the Association of Arts and Crafts and the Society for the Decorative Arts] 11, 175.
- Odde, L. 2008
“La nouvelle Artemise”: Catherine de’ Medici as Queen of France and Patron of the Arts (PhD diss., University of New York, unpublished).
- Oddy, W.A., Padley, T.G. & Meeks, N.D. 1979
Some unusual techniques of gilding in antiquity, in: *Proceedings of the 18th International Symposium on Archaeometry and Archaeological Prospection, Bonn, 14-17 March 1978*, Cologne, 230-242.

- Olsen, T. H. 1962
Dacia og Rhodos. En studie over forholdet mellem Johannitterstormesteren på Rhodos og prioratet Dacia i de 14. og 15. århundrede med særligt henblik på Juan de Carduna's visitation (-1476), København.
- Omont, H. 1902
Missions archéologiques françaises en Orient aux XVIIe et XVIIIe siècles II, Paris.
- Pacini, P. B. 1983
Considerazioni sulla storia del Museo Archeologico di Firenze, *BdA* 68.17, 93-108.
- Paleologou, S. 2008
Τάφοι της Χάλκης: τάφοι και ταφικά έθιμα από την αρχαία νεκρόπολη, *AAA* 35-38, 2002-2005 [2008], 149-162.
- Paleologou, S. 2011
Halki. Grave groups – From the Geometric period to Late Antiquity, in: Stampolidis, Tassoulas & Filimonos-Tsopotou (eds.) 2011, 207-222, nos. 25-55.
- Pallottino, M. 1984
Etruscologia, Milano
- Panagiotis, P. I. & Lorber, C. C. 2009
The Cult of Helios in the Seleucid East, *Topoi. Orient-Occident* vol. 16(1), 19-42.
- Paoletti, O. 2007
Materiale rodio di età geometrica e della prima età orientalizzante, in: Guidotti M. C. et al. (eds.), 98-107.
- Paoletti, O. 2012
Ceramica geometrica greca nel Museo Archeologico Nazionale di Firenze, Firenze.
- Paolillo, A. 2000
Fra Sabba da Castiglione, antiquario e teorico del collezionismo nella Faenza del 1500, Faenza.
- Papachristodoulou, C. I. 1994
Ιστορία της Ρόδου. Από τους προϊστορικούς χρόνους έως την ενσωμάτωση της Δωδεκανήσου (1948), Αθήνα.
- Papachristodoulou, I. C. 1983
Γεωμετρικά εύρηματα στο Βάτι 'Ρόδου, in: *Grecia, Italia e Sicilia nell'VIII e VII secolo a.C. Tomo III, Atti del Convegno Internazionale, Atene, 15-20 ottobre 1979*, *ASAtene* 61, Roma, 9-17.
- Papachristodoulou, I. C. 1989
Οί άρχαίοι ροδιακοί δήμοι. Ιστορική έπισκόπηση. Η Ίαλυσία, Αθήνα.
- Papachristodoulou, I. C. 2008
Η Χάλκη στην αρχαιότητα. Σχέσεις με τη Ρόδο, *ΔωδΧρ KB'*, 43-44.
- Papanicolaou-Christensen, A. 1994
Christian Hansen: breve og tegninger fra Grækenland, København.
- Papanicolaou-Christensen, A. 2015
Ένας Δανός κοσμοπολίτης διαδίδει τα ελληνικά γράμματα, Αθήνα.
- Papapostolou, I. 1968
Παρατηρήσεις επί γεωμετρικών αγγείων εξ Ιαλυσού, *ADelt* 23.1, 77-98.
- Paravicini, W. 1999
Europäische Reiseberichte des späten Mittelalters. Eine analytische Bibliographie 2. Französische Reiseberichte, Frankfurt am Main.
- Paravicini, W. Hirschbiegel J. & Kraack, D. 2000
Europäische Reiseberichte des späten Mittelalters. Eine analytische Bibliographie 3. Niederländische Reiseberichte, Frankfurt am Main.
- Paris, J. 1913
Une nouvelle collection rhodienne de timbres amphoriques, in: *Melanges Holleaux, Recueil de Mémoires concernant l'Antiquité Grecque offert á Maurice Holleaux en souvenir de ses années de direction á l'École française d'Athènes (1904-1912)*, Paris, 153-175.
- Paris, J. 1914
Timbres amphorique de Rhodes, *BCH* 38, 300-326.
- Patera, I. 2012
Offrir en Grèce ancienne. Gestes et contextes, Stuttgart.
- Patsiada, V. 2009a
Αρχαιολογικός χώρος Καμίρου (Εργασίες αποκατάστασης από την πυρκαϊά της 4^{ης} Δεκεμβρίου 2008), *ADelt* 64, *Chronika*, 1000-1002.
- Patsiada, V. 2009b
Αρχαιολογικός χώρος Καμίρου, *ADelt* 64, *Chronika*, 1010-1012.
- Patsiada, V. et al. 2015
Ρόδος, ένα ελληνικό νησί στις πόλεις της Ανατολής (15ος-5ος αι. Π.Χ.), Athens.
- Payne, H. 1931
Necrocorinthia, A Study of Corinthian Art in the Archaic Period, Oxford.
- Pedersen, H. (ed.) 2012
Dialog med Akropolis. Danske kunstnere i Athen, Aarhus.

- Pemberton, E. G. 1989
Corinth Volume XVIII, Part 1. The Sanctuary of Demeter and Kore. The Greek Pottery, Princeton.
- Pentz, P. 1992
Excavations and Surveys in Southern Rhodes: The Medieval period, in: Sørensen & Pentz, 160-252.
- Pentz, P. 2014
Erik I. Ejegod og Bodil, in: Kryger, K. (ed.), *Danske Kongegrave I-III*, København, 211-216.
- Pernice, E. 1904
Erwerbungen der Antiken-Sammlung in Deutschland, *AA* 1904, 17-46.
- Pernier, L. 1914
Ricognizioni archeologiche nelle Sporadi, *BA* VIII, 219-242.
- Petermann, A. 1853
Über das Innere Australliens, *Zeitschrift für allgemeine Erdkunde* 1, 411-418.
- Petricioli, M. 1990
Archeologia e Mare Nostrum. Le missioni archeologiche nella politica mediterranea dell'Italia, 1898-1943, Roma.
- Petricioli, M. 2000
La vision italienne. Les missions archéologiques comme instrument de politique étrangère, in: Etienne, R. (ed.), *Les politiques de l'archéologie. Du milieu du XIX^e siècle à l'orée du XXI^e*, Colloque organisé par l'École française d'Athènes, septembre 1996, Athènes, 25-31.
- Pfuhl, E. 1903
Der archaische Friedhof am Stadberge von Thera, *AM* 28, 1-288.
- Pfuhl, E. & Möbius, H. 1977
Die ostgriechischen Grabreliefs, vol. I, Mainz.
- Pierrat-Bonnefois, G., Bouquillon, A. & Coulié, A. 2014
La faïence dans le monde grec archaïque, témoin privilégié de la complexité des échanges en Méditerranée orientale, in: Coulié & Filimonos-Tsopotou (eds.) 2014, 89-92.
- Pilz, O. 2011
Achilleus und Penthesileia auf einem kretischen Tonrelief aus Phanes auf Rhodos, in: Pilz, O. & Vonderstein, M. (eds.), *KERAUNIA. Beiträge zu Mythos, Kult und Heiligtum, Beiträge zur Altertumskunde* 298, Berlin, 195-213.
- Porro, G. G. 1909
Teosofia e patriottismo, *Bollettino della Sezione Italiana della Società Teosofica* III, 301-304.
- Porro, G. G. 1911
Asclepio. Saggio mitologico sulla medicina religiosa dei Greci, Milano.
- Porro, G. G. 1912
La Guerra, *Bollettino della Sezione Italiana della Società Teosofica* V, 357-359.
- Porro, G. G. 1914a
Esplorazioni nel territorio di Kamiros (Rodi), *ASAtene* I, 368-369.
- Porro, G. G. 1914b
Relazione sulle Antichità della Cirenaica, in: Ministero delle Colonie, *La mostra coloniale di Genova 1914 (Monografie e rapporti coloniali, 14 ottobre 1914, Vols. 1-2.)*, Roma, 166-170.
- Porro, G. G. 1915a
Ricognizione archeologica di Kamiros, *BA* IX, 283-300.
- Porro, G. G. 1915b
Influssi preellenici nella civiltà protosarda, *AeR* 18, fasc. luglio-settembre, 145-184.
- Porro, G. G. 1916
Bolli d'anfore rodie del Museo Nazionale Romano, *ASAtene* II, 103-124.
- Poulsen, F. 1912
Der Orient und die frühgriechische Kunst, Leipzig.
- Prange, M. 1993
Corpus Vasorum Antiquorum. Kiel. Kunsthalle, Antikensammlung, Band 2. Deutschland 64, München.
- Primerano, D. 1982
La prima sistemazione del Museo Etrusco di Firenze, *Studi e Materiali* V, 1982, 40-43.
- Pugliese Carratelli, G. 1952-1954
Tituli Camirenses. Supplementum, *ASAtene* 30-32, n.s. 14-16, 211-246.
- Pülz, A. M. 2009
Goldfunde aus dem Artemision von Ephesos, Vienna.
- Rackham, O. & Vernicos, N. 2009
On the Ecological History and Future Prospects of the Island of Chalki, in: Magaris, N. S. (ed.), *Desertification in Southern Europe*.
- Rasera, F. 2010
Contesti roveretani. Note sulla città d'origine di Halbherr, Orsi e Gerola, in: Maurina & Sorge 2010, 7-15.

- Rasmussen, B. B. & Lund, J. 2014
Fouilles et explorations danoises à Rhodes, in: Coulié & Filimonos-Tsopotou (eds.), 42-50.
- Rasmussen, H. 1906
Orientalske Rejsebilleder, Arkitekten. *Meddelelser fra Akademisk Arkitektforening* 8, nos. 51-52, 549-560, 565-569.
- Rasmussen, K. L. & Lund, J. 2004
On clay provenance of Rhodian transport amphorae, in: Eiring, J. & Lund, J. (eds.), *Transport Amphorae and Trade in the Eastern Mediterranean, Monographs of the Danish Institute at Athens* 5, 325-327.
- Reitzel-Nielsen, E. 1988
Johanniterordenens historie med særligt henblik på de nordiske lande II: Rhodos og Malta (1309-1798), København 1988.
- Rice, E. E. 1995
Grottoes on the Acropolis of Hellenistic Rhodes, *BSA* 90, 383-404.
- Richter, G. M. A. 1968
Korai. Archaic Greek Maidens, London/New York.
- Ridgway, B. S. 2000
Hellenistic Sculpture, 2. The Styles of ca. 200-100 B.C., Madison.
- Ridgway, D. 1992
The First Western Greeks, Cambridge.
- Roberts, S. R. 1978
The Attic Pyxis, Chicago.
- Robinson, D. M. 1941
Excavations at Olynthus. Part X. Metal and minor miscellaneous finds, Baltimore.
- Robinson, D. M. 1950
Excavations at Olynthus. Part XIII. Vases found in 1934 and 1938, Baltimore.
- Rockstroh, K. C. 1980
s.v. Friis, Jesper, *Dansk Biografisk Leksikon* 4, 3. udgave, København, 635-636.
- Roger, J.-M. 2012
Christophe Buondelmonti, doyen de l'église cathédrale de Rhodes (1430), *Byzantion* 82, 323-346.
- Romualdi, A. 2000
Il Museo archeologico nazionale di Firenze, in: Torelli, M. (ed.), *Gli Etruschi, Catalogo Mostra Venezia 2000*, Milano, 515-521.
- Ross, L. 1845
Reisen auf den griechischen Inseln des ägäischen Meeres III, Stuttgart & Tübingen.
- Ross, L. 1852
Reisen auf den griechischen Inseln des ägäischen Meeres IV: Reisen nach Kos, Halikarnassos, Rhodos und der Insel Cyprien, Stuttgart & Tübingen.
- Rottiers, B. E. A. 1830
Description des monumens de Rhodes, Brussels.
- Roux, G. 1960
Qu'est-ce qu'un Kolossos? *REA* 62, 5-40.
- Ruesch, A. 1910
Guida illustrata del Museo Nazionale di Napoli, Naples.
- Ruxer, M. S. & Kubzak, J. 1975
Bijouterie antique de l'ancienne collection Czartoryski à Cracovie, 2. Parures du cou et du buste, *ArcheologiaWarsz* 26, 95-116.
- Rystedt, E. forthcoming
Corpus Vasorum Antiquorum, Sweden 5 (Uppsala 1 & Lund 2).
- Sabetai, V. 2004
Μελαμβαφής και ύστερη ερυθρόμορφη κεραμική από νεκροταφείο της Βοιωτίας, in: *ΣΤ' Επιστημονική Συνάντηση για την Ελληνιστική Κεραμική, Βόλος, 17-23/4/2000*, Αθήνα, 464-466.
- Sabetai, V. 2012
Ταφή νέας γυναίκας από την Ακραιφία: μια άωρη νεκρή του 4^{ου} αι. π.Χ., in: Adam-Veleni, P. & Tzanavari, K. (eds.), *Δινήεσσα, τιμητικός τόμος για την Κατερίνα Ρωμοπούλου*, Θεσσαλονίκη 2012, 305-314.
- Salmon, J. B. 1984
Wealthy Corinth. A History of the City to 338 B.C., Oxford.
- Salzmann, A. 1861
Une ville homérique, sa nécropole, *RA* 4, 467-472.
- Salzmann, A. 1863
Bijoux phéniciens trouvés dans la nécropole de Camiros, *RA* 6, 1-6.
- Salzmann, A. 1867
Journal des fouilles de Camiros, *Bulletin archéologique du musée Parent I*, 29-35.

- Salzmann, A. 1875
Nécropoles de Camiros. Journal des fouilles exécutées dans cette nécropole pendant les années 1858 à 1865, Paris.
- Sampson, A. 2010
Μεσολιθική Ελλάδα 9600-6500 π.Χ., Περιστέρι.
- Sampson, A. 2016
An extended Mesolithic settlement in Naxos, *MedAA* 16, 269-271.
- Sampson, A., Kaczanowska, M., Kozłowski, J. K. et al. 2012
Mesolithic occupations and environments on the Island of Ikaria, Aegean, Greece, *Folia Quaternaria* 80, 5-86.
- Sanders, T. 2014
The Monroe Doctrine: Openly Defensive (1800-1824). URL: <http://digitalcommons.wou.edu/his/36> (accessed 29 January 2019).
- Santi, M. 2018
Sguardo a Levante. La politica culturale italiana sul patrimonio archeologico e monumentale del Dodecaneso, 1912-1945, Sesto San Giovanni.
- Santoro, R. 1996
I restauri degli edifici medievali di Rodi, in: Livadiotti & Rocco (eds.), 228-240.
- Sapouna-Sakellarakis, E. 1978
Die Fibeln der griechischen Inseln, Prähistorische Bronzefunde 14.4, München.
- Savary, C.-É., 1788
Lettres sur la Grèce, faisant suite de celles sur l'Égypte, Amsterdam.
- Scatozza-Höricht, L. A. 1989
La scultura greco-romana, in: Pozzi, E. (ed.), *Le Collezioni del Museo Nazionale di Napoli* I.2, Rome - Milan, 8-42, 96-153, nos. 1-279.
- Schaus, G. P. & Benson, J. L. 1995
Corpus Vasorum Antiquorum. The University Museum Philadelphia, Pennsylvania 2. USA 29, Philadelphia.
- Schliemann, H. 1881
Ilios. The City and Country of the Trojans, New York - London.
- Schierup, S. forthcoming
K. F. Kinch – og udforskningen af oldtidsbyer på Rhodos og den makedonske halvø, in: Mortensen, E. & Raja, R., *Store danske arkæologer – på jagt efter fortidens byer*, Aarhus.
- Schlottzhauer, U. 2000
Die südionische Knickrandschalen. Formen und Entwicklung der sog. Ionischen Schalen in archaischer Zeit, in: Krinzinger, F. (ed.), *Die Ägäis und das westliche Mittelmeer. Beziehungen und Wechselwirkungen 8. bis 5. Jh. v. Chr.*, Wien, 407-416.
- Schofield, L. 1992
The Influence of Eastern Religions on the Iconography of Ivory and Bone Objects in the Kameiros Well, in: Fitton, J. L. (ed.), *Ivory in Greece and the Eastern Mediterranean from the Bronze Age to the Hellenistic Period, British Museum Occasional Papers* 85, 173-184.
- Scholl, A. & Schwarzmaier, A. (eds.) 2019
Sulpturen der Berliner Antikensammlung, Band 2, Teil 1, Griechische Rundskulpturen von den Anfängen bis zum Hochhellenismus, Berlin.
- Schumacher, F. 2016
Embedded Empire: The United States and Colonialism, *JMEH* 14, 202-224.
- Scrinzi, A. 1898-1899
Iscrizioni greche inedite di Rodi, *Atti Venezia* [s. 7] 57, 251-287.
- Scully, R. 2012
Constructing the Colossus: The Origins of Linley Sambourne's Greatest *Punch* Cartoon, *IJOCA* 14.2, 120-142.
- Scully, R. 2014a
Towards a Global History of the Political Cartoon: Challenges and Opportunities, *IJOCA* 16.1, 29-47.
- Scully, R. 2014b
Accounting for Transformative Moments in the History of the Political Cartoon. *IJOCA* 16.2, 332-364.
- Segre, M. 1934
L'agorà degli dei Camirese, *Athenaeum*, 144-150.
- Segre, M. & Pugliese Carratelli, G. 1949-1951
Tituli Camirenses, *ASAtene* 17-19, n.s. 11-13, 139-318.
- Sgubini Moretti, A. M. 2000
I Castellani e la loro collezione, in: Sgubini Moretti (ed.), *La collezione Augusto Castellani: Soprintendenza Archeologica per l'Etruria Meridionale. Museo Nazionale Etrusco di Villa Giulia*, Rome.

- Simantoni-Bournia, E. 2004
La Céramique Grecque à Reliefs: Ateliers insulaires du VIIIe au VIe siècle avant J.-C., Geneva.
- Skerlou, E. 2001
Καύσεις νεκρών από την Καρδάμαινα της Κω, in: Stampolidis (ed.), 259-284.
- Smith, A. H. 1901
A Catalogue of Sculpture in the Department of Greek and Roman Antiquities, British Museum, vol. III, London.
- Smith, C. 1883
Inscriptions from Rhodes, *JHS* 4, 136-141.
- Smith, C. 1884
Four Archaic Vases from Rhodes, *JHS* 5, 220-240.
- Smith, C. 1885a
Vases from Rhodes with Incised Inscriptions, *JHS* 6, 371-377.
- Smith, C. 1885b
Catalogue of a Collection of Greek & Roman Antiquities and Miscellaneous Works of Art Excavated in Rhodes, which will be Sold by Auction by Messrs. Sotheby, Wilkinson and Hodge, on Thursday, 3rd December, 1885, and Two Following Days, London.
- Smith, C. 1896
Excavations in Melos, *BSA* 2, 63-76.
- Smylitopoulos, C. 2008
Rewritten and Reused: Imaging the Nabob through "Upstart Iconography", *Eighteenth-Century Life* 32.2, 39-59.
- Sotheby, S. L. & Wilkinson, J. 1862
Catalogue of a small but must choice collection of Ancient Greek Pottery excavated by Messrs. Biliotti & Salzmann, in the necropolis of Camirus, island of Rhodes, London.
- Sowder, A. A. 2009
Greek Bronze Hydriai (PhD diss., Emory University, unpublished).
- Sparkes, B. A. & Talcott, L. 1970
The Athenian Agora XII. Black and Plain Pottery of the 6th, 5th and 4th Centuries B.C., Agora XII, Princeton.
- Stampolidis, N. C. (ed.) 2001
Καύσεις στην Εποχή του Χαλκού και την Πρώιμη Εποχή του Σιδήρου, Πρακτικά του Συμποσίου, Ρόδος, 29 Απριλίου - 2 Μαΐου 1999, Αθήνα.
- Stampolidis, N. C. & Karetsou, A. (eds.) 1998
Ανατολική Μεσόγειος. Κύπρος - Δωδεκάνησα - Κρήτη, 16ος - 6ος αι. π. Χ., Αρχαιολογικό Μουσείο Ηρακλείου, Μάρτιος - Ιούνιος 1998, Ηράκλειο.
- Stampolidis, N. C., Tassoulas, Y. & Filimonos-Tsopotou, M. (eds.) 2011
Islands off the Beaten Track... An Archaeological Journey to the Greek Islands of Kastellorizo, Symi, Halki, Tilos and Nysiros, Athens.
- Stefanakis, M. I., Kalogeropoulos, K., Georgopoulos, A. & Bourbou, C. 2015
Exploring the Ancient Demos of Kymissaleis on Rhodes: Multidisciplinary Experimental Research and Theoretical Issues, in: Haggis, D. C. & Antonaccio, C. M. (eds.), *Classical Archaeology in Context. Theory and Practice in Excavation in the Greek World*, Berlin - Boston, 259-314.
- Stefanakis, M. I. 2017
Όψεις της Κυμισάλας κατά τον 19ο αιώνα: από τις πρώτες αρχαιολογικές περιγραφές μέχρι τις έρευνες του Alfred Biliotti (1843-1880), *Δωδεκανησιακά Χρονικά* 27, 28-57.
- Stefanakis, M. I. 2018
Kymissala: Two Centuries of Exploration and Research, in: Stefanakis (ed.) 2018, 1-8.
- Stefanakis, M. I. (ed.) 2018
KYMISSALA: Archaeology – Education – Sustainability, Oxford.
- Stefanidou, A. 2001
The Medieval Town of Rhodes based on Johannes Hedeberg's Manuscript (1854), *MedAA* 1.1, 69-77.
- Stephens, F. G. & George, M. D. 1870-1954
Catalogue of Political and Personal Satires in the Department of Prints and Drawings in the British Museum, London.
- Stilp, F. 2006
Die Jacobsthal-Reliefs. Konturierte Tonreliefs aus dem Griechenland der Frühklassik, Rome.
- Stissi, V. 2003
From Catalogue to Cultural Context: Bringing Life to Greek Sanctuary Pottery, in: Schmaltz, B. & Söldner, M. (eds), *Griechische Keramik im kulturellen Kontext. Akten des internationalen Vasen-symposiums in Kiel vom 24. bis 8.9.2001 veranstaltet durch das Archäologische Institut der Christian-Albrechts-Universität zu Kiel*, 77-79.

- Strait, D. J. 2017
The Wisdom of Solomon, Ruler Cults, and Paul's Polemic against Idols in the Areopagos Speech, *Journal of Biblical Literature* 136.3, 609-632.
- Strøm, I. 1994
Hans Christian Andersen's Visit to the Acropolis in on 27 March 1841, *ProcDanInstAth* 2, 383-397.
- Strøm, I. 2005
H. C. Andersen i Athen, *Meddelelser fra Klassisk Arkæologisk Forening* 59, 10-19.
- Susini, G. 1965
Supplemento epigrafico di Caso, Scarpanto, Saro, Calchi, Alinnia e Tilo, *ASAtene* 41-42, 1963-1964 [1965], 203-292.
- Sutton, R. F. J. 1992
Pornography and Persuasion on Attic Pottery, in: Richlin, A. (ed.), *Pornography and Representation in Greece and Rome*, Oxford, 3-35.
- Szemethy, H. D. 2014
Felix von Luschan und seine Reise nach Pamphylien gemeinsam mit Graf Lanckoronski im Herbst und Winter 1882/83, in: Nikolasch, N. (ed.), *Symposium zur Geschichte von Millstatt und Kärnten*, St. Leonhard, 105-130.
- Szemethy, H. D. & Zhuber-Okrog, K. 2016
Erwerbungen der archäologischen Expedition nach Kleinasien unter Otto Benndorf im Jahre 1881, in: Blakolmer, F., Seyer, M. & Szemethy, H. D. (eds.), *Angekommen auf Ithaka. Festgabe für Jürgen Borchardt zum 80. Geburtstag*, Vienna, 251-276.
- Sørensen, L. W. 1992
Excavations and Surveys in Southern Rhodes. Part I: The Post Mycenaean Period until Roman Times, in: Sørensen & Pentz, 11-157.
- Sørensen, L. W. 2002
The Archaic Settlement at Vroulia on Rhodes and Ian Morris, *ActaHyp* 9, 243-253.
- Sørensen, L. W. & Pentz, P. 1992
Lindos IV,2. Excavations and Surveys in Southern Rhodes: The Post-Mycenaean Periods until Roman Times and the Medieval Period, Copenhagen.
- Talalay, L. E. 2013
Drawing Conclusions: Greek Antiquity, the Economic Crises, and Political Cartoons, *Journal of Modern Greek Studies* 31.2, 249-276.
- Tandrup, L. 1984
s.v. Ulfeldt, Jakob, *Dansk Biografisk Leksikon* 15, 3. udgave, København, 147-149.
- Taramelli, A. & Porro, G. G. 1915
Sardinia, *NSc* 12, 108-124.
- Taramelli, A. 1915
Il Dott. Gian Giacomo Porro, *Archivio Storico Sardo* XI, 213-214.
- Thomas, N. 2000
Alfonsina Orsini de' Medici and the "problem" of a female ruler in the early sixteenth-century Florence, *Renaissance Studies* 14.1, 70-90.
- Thomas, R. I. 2015
Naukratis: Greeks in Egypt. Greek terracotta figures. URL: http://www.britishmuseum.org/pdf/Thomas_Greek_Figures.pdf (accessed 30 January 2019).
- Thomas, R. I. 2013-2019
Cypriot Figurines, in: Villing *et al.*, *Naukratis: Greeks in Egypt*. URL: https://www.britishmuseum.org/pdf/Thomas_Cypriot_Figures.pdf (accessed 30 January 2019).
- Thornton, D. 2004
"Le mie cose": Fra Sabba da Castiglione e i suoi oggetti, in: Gentilini, A. R. (ed.), *Sabba da Castiglione (1480-1554): dalle corti rinascimentali alla Commenda di Faenza. Atti del Convegno (Faenza, 19-20 maggio 2000)*, Florence, 313-328.
- Torr, C. 1885
Rhodes in Ancient Times, Cambridge.
- Treister, M. Y. 1996
The Role of Metals in Ancient Greek History, Leiden - New York - Köln.
- Triantaphyllidis, P. 2007-2008
Πήλινος ασκός των αρχαϊκών χρόνων από την Ιαλυσό Ρόδου, *AAA* 40-41, 147-154.
- Triantaphyllidis, P. 2008
Rhodes and the Orient in the 7th c. BC: The evidence from a primary cremation at Daphne in Ialysos, in: Papageorgiadou-Banis, C. & Giannikouri, A. (eds.), *Sailing in the Aegean. Readings on the Economy and Trade Routes*, Athens, 89-104.

- Triantaphyllides, P. 2009
Αρχαιολογικά Ευρήματα από τις Φάνες Ρόδου στα Μουσεία του Λούβρου και του Βρετανικού, in: Parachristodoulou, I. C., Triantaphyllides, P. & Zervaki, P., *Φάνες. Επιγραφές και αρχαιολογικά ευρήματα*, Weilheim, 41-87.
- Triantaphyllides, P. (ed.) 2015
Ερεθιμία: Διαμόρφωση και ανάδειξη του Ιερού του Ερεθιμίου Απόλλωνος στον Θεολόγο Ρόδου, Ρόδος.
- Troilo, S. 2012
“A gust of cleansing wind”: Italian archaeology on Rhodes and in Libya in the early years of occupation (1911-1914), *JMIS* 17.1, 45-69.
- Truelsen, S. T. 2015
Fynboerne. Kunstnerkolonien 1885-1920, København.
- Tsakanika, E. 2012
Νέα δεδομένα για την εξέδρα Παμφιλίδα στην ακρόπολη της Λίνδου, in: Makris, E. (ed.) Πρακτικά του ΙΖ΄ Πολιτιστικού Συνεδρίου Δωδεκανήσου, *Δωδεκανησιακά Χρονικά ΚΕ΄*, Ρόδος, 145-161.
- Tsakiri, M., Kougioumoutzis, K. & Iatrou, G. 2016
Contribution to the vascular flora of Chalki Island (East Aegean, Greece) and biomonitoring of a local endemic taxon, *Willdenowia – Annals of the Botanic Garden and Botanical Museum Berlin* 46, 175-190.
- Tsalachoures, K. 2000
Η οικονομική πολιτική της Ιταλίας στα Δωδεκάνησα, Αθήνα.
- Tsimbidou-Avlonite, M. 2009
Ανασκαφικές έρευνες στον Φοίνικα ν. Θεσσαλονίκης, 1987-2006 – μία εικοσαετία ανατροπών, *Αρχαιολογικό Έργο στη Μακεδονία και στη Θράκη (ΑΕΜΘ)*, 20 χρόνια, 435-446.
- Tsingarida, A. 2012
White-ground Cups in Fifth-century Graves: A Distinctive Class of Burial Offerings in Classical Athens, in: Schierup, S. & Rasmussen, B. B. (eds.), *Red-Figure Pottery in its Ancient Setting: Acts of the International Colloquium held at the National Museum of Denmark in Copenhagen, November 5-6, 2009*, Aarhus, 44-57.
- Tsirpanlis, Z. N. 1995
Άνέκδοτα έγγραφα για τη Ρόδο και τις Νότιες Σποράδες (1421-1453) I, Ρόδος.
- Tsirpanlis, Z. N. 1998
Ιταλοκρατία στα Δωδεκάνησα 1912-1943, Ρόδος.
- Tsirpanlis, Z. N. 2002
Στη Ρόδο του 16ου-17ου αιώνα. Από τους Ιωαννίτες Ιππότες στους Οθωμανούς Τούρκους, Ρόδος.
- Turner, W. 1820
Journal of a Tour in the Levant I-III, London.
- Van der Vin, J. P. A. 1980
Travellers to Greece and Constantinople Ancient Monuments and Old Traditions in Medieval Travellers' Tales I-II, Istanbul.
- Van Egmont, J. A. & Heyman, J. 1757
Reizen door een gedeelte van Europa, klein Asien, verscheide Eilanden van de Archipel, Syrien, Palestina of het H. Land, Aegypten, den Berg Sinai, enz I, Leiden.
- Van Egmont, J. A. & Heyman, J. 1759
Travels Through Part of Europe, Asia Minor, the Islands of the Archipelago; Syria, Palestine, Egypt, Mount Sinai, etc. I, London.
- Van Gelder H. 1900
Geschiede der alten Rhodier, Den Haag.
- Van Kooten, G. H. 2007
The year of the Four Emperors and the Revelation of John: The ‘pro-Neronian’ Emperors Otho, Galba and Vitellius, and the Images and Colossus of Nero in Rome, *JSNT* 30, 205-248.
- Varanini, G. M. 1991
Formazione e percorsi di un erudito trentino tra Otto e Novecento: Giuseppe Gerola tra medievistica, ricerca archeologica e storia dell’arte (1895-1910), in: *La Ricerca Archeologica nel Mediterraneo. P. Orsi – F. Halbherr – G. Gerola*, Rovereto, 75-106.
- Vedder, U. 2015
Der Koloss von Rhodos: Archäologie, Herstellung und Rezeptionsgeschichte eines antiken Weltwunders, Mainz am Rhein.
- Verdan, S., Pfyffer, A. K. & Léderrey, C. 2008
Éretria XX. Céramique géométrique d’Érétrie, Gollion.
- Vico, E. 1558
Discorsi sopra la Medaglie degli Antichi, Venice.
- Vidua, C. 1826
Inscriptiones antiquae a Comite Carolo Vidua in Turcico itinere collectae, Paris.

- Villing, A. & Mommsen, H. 2017
Rhodes and Kos: East Dorian Pottery Production of the Archaic Period, *ABSA* 112, 99-154.
- Villing, A., Bergeron, M., Bourogiannis, G., Johnston, A., Leclère, F., Masson, A. & Thomas R. T. 2013-2019
Naukratis: Greeks in Egypt. British Museum Online Research Catalogue.
URL: <http://www.britishmuseum.org/naukratis> (accessed 30 January 2019).
- Vingopoulou, I. 2004
Le monde grec vue par les voyageurs du XVIe siècle, Institut de Recherches Néohelléniques Fondation Nationale de la Recherche Scientifique 86, Athènes.
- Virgilio, F. 2009a
1.Ceramica micenea, in: Jasink & Bombardieri (eds.), 313-365
- Virgilio, F. 2009b
2.Reperti metallici e litici, in: Jasink & Bombardieri (eds.), 366-371
- Von Hammer-Purgstall, J. 1811
Topographische Ansichten gesammelt auf einer Reise in die Levante, Vienna.
- Von Wilamowitz-Möllendorf, U. 1927
Heilige Gesetze: Eine Urkunde aus Kyrene, Berlin.
- Waldhauer, O. 1931
Die antiken Skulpturen der Ermitage II, Berlin.
- Wallensten, J. 2009
Lunds universitets antikmuseum, Sölvegatan 2, 1951-2006, Lund.
- Walser, E. 1914
Poggius Florentinus. Leben und Werke, Leipzig, Berlin.
- Walter-Karydi, E. 1973
Samos VI.1. Samische Gefässe des 6. Jahrhunderts v. Chr. Bonn.
- Webb, V. 1978
Archaic Greek Faience: miniature scent bottles and related objects from East Greece, 650-500 B.C., Warminster.
- Webb, V. 2017
Faience in seventh-century Greece: egyptianizing 'bric a brac' or useful paradigm for relations with Egypt?, in: Charalambidou & Morgan (eds.), 71-79.
- Weiss, R. 1964
Un umanista antiquario: Cristoforo Buondelmonti, *Lettere Italianae* 16, 105-116.
- Wells, B. 1984
Rhodian stamped amphora handles in two Swedish collections, *MedMusB* 19, 57-62.
- Wettlaufer, J. 1999
Europäische Reiseberichte des späten Mittelalters. Eine analytische Bibliographie 2. Französische Reiseberichte, Frankfurt am Main.
- Whitley, J. 2002
Objects with Attitude: Biographical Facts and Fallacies in the Study of Late Bronze Age and Early Iron Age Warrior Graves, *CAJ* 12.2, 217-232.
- Whitley, J. 2013
Homer's Entangled Objects: Narrative, Agency and Personhood In and Out of Iron Age Texts, *CAJ* 23.3, 395-416.
- Wiener, M. H. 1991
The Nature and Control of Minoan Foreign Trade, in: Gale, N. H. (ed.), *Bronze Age Trade in the Mediterranean. Proceedings of the Conference at Rewley House, Oxford, 1989, Studies in Mediterranean Archaeology* 95, Jonsered, 325-350.
- Williams, D. 2009
Lord Elgin's Firman, *Journal of the History of Collections* 21, 49-76.
- Williams, D. & Ogden, J. 1994
Greek Gold: Jewellery of the Classical World, London.
- Williams, D. & Rasmussen, B. B. 2015
A Funerary Plaque from Athens, in: Rasmussen, B. B. (ed.), *The Past in the Present*, Copenhagen, 123-144.
- Wilson, D. 2002
The British Museum: A History, London.
- Wilton, A. 1979
J.M.W. Turner. His Art and Life, New York.
- Witulski, T. 2011
Implizite Polemik durch Parallelisierung. Der allos angelos (Apk 10,1, f.5), der Gott Helios und der Koloss von Rhodos, in: Wischmeyer, O. & Scornaienchi, L. (eds.), *Polemik in der frühchristlichen Litteratur. Texte und Kontexte*, Berlin, New York, 543-575.
- Woodward, A. M. 1926-1927
Some Note-Books of Sir William Gell, *BSA* 28, 107-127.
- Yavis, C. 1949
Greek Altars. Origins and Typology, Missouri.

Yérasimos, S. 1991

*Les voyageurs dans l'Empire ottoman
(XIVe-XVIe siècles)*, Istanbul.

Zervaki, F. 1995

Μαύρη Μυρτιά, *ADelt* 50, *Chronika*,
800-801.

Zervaki, F. 1998

Θέση Κατσούπερνος, *ADelt* 53,
Chronika, 956.

Zervaki, P. 2014

La céramique rhodienne. La
céramique à l'époque mycénienne, in:
Coulie & Filimonos-Tsopotou (eds.),
104-107.

Zervoudaki, H. 1969

Στοά Καμίρου, *ADelt* 24, *Chronika*,
482-483.

Zervoudaki, H. 1977

Κάμυρος, *ADelt* 32, *Chronika*, 344.

Zimmer, G. & Hackländer, N. 1997

*Der Betende Knabe. Original und
Experiment*, Frankfurt a/M.

Zindel, C. 1998

*Meeresleben und Jenseitsfahrt. Die
Fischteller der Sammlung Florence
Gottet*, Kilchberg/Zurich.

List of Authors

NATHAN BADOUD

Professor in Classical Archaeology
University of Fribourg
16, rue Pierre-Aeby
1700 Fribourg
Switzerland
nathan.badoud@unifr.ch

GIORGOS BOUROGIANNIS

PhD, A.G. Leventis Postdoctoral
Fellow
Medelhavsmuseet
Fredsgatan 2
Box 16008
10321 Stockholm
Sweden
giorgos.bourogiannis@
varldskulturmuseerna.se

ANNE COULIÉ

Chief curator, Louvre Museum
Department of Greek, Etruscan and
Roman Antiquities
Rue de Rivoli
75058 Paris
France
anne.coulie@louvre.fr

MATTEO D'ACUNTO

Associate Professor of Greek
Archaeology and History of Art
Department of Asia, Africa and
Mediterranean
University of Napoli "L'Orientale"
Piazza S. Domenico Maggiore, 12
(Palazzo Corigliano)
80134, Napoli
Italy
mdacunto@unior.it

ANDREA DI ROSA

PhD, University of Fribourg
16, rue Pierre-Aeby
1700 Fribourg
Switzerland
andrea.dirosa@unifr.ch

VASILIKI ELEFThERIOU

Architect, Director of the Acropolis
Restoration Service
Ministry of Culture & Sports
10 Polygnotou str.
10555, Athens
Greece
veleftheriou@culture.gr

ANGELIKI GIANNIKOURI

Archaeologist, Chairman of the
Scientific Committee of Restoration
and Consolidation of
Monuments on the Acropolis of
Lindos
Ephorate of Antiquities for the
Dodecanese
Ippoton str.
Rhodes 85131
Greece
epilindos@gmail.com

KRISTIAN GÖRANSSON

Director, Swedish Institute of Classical
Studies in Rome
Via Omero 14
00197 Rome
Italy
goransson@isvroma.org

SANNE HOFFMANN

PhD, National Museum of Denmark
Department of Ancient Cultures of
Denmark and the Mediterranean
Frederiksholms Kanal 12
1220 Copenhagen K
Denmark
sanne.hoffmann@natmus.dk

MARIO IOZZO

Director of the National
Archaeological Museum of Florence
and of the Villa Corsini at Castello
(Florence)
Via della Pergola 65
50121 Florence
Italy
mario.iozzo@beniculturali.it

ROSEMARY JEFFREYS

D.Phil. student, University of Oxford
Lincoln College
Turl Street
Oxford OX1 3DR
Great Britain
rosemary.jeffreys@lincoln.ox.ac.uk
rosemaryjeffreys@talktalk.net

ERIPHYLE KANINIA

Archaeologist, Ephorate of Antiquities
for the Dodecanese
Ippoton str.
Rhodes 85131
Greece
ekania@otenet.gr

JOHN LUND

Senior Researcher, National Museum
of Denmark
Department of Ancient Cultures of
Denmark and the Mediterranean
Frederiksholms Kanal 12
1220 Copenhagen K
Denmark
john.lund@natmus.dk

CHRISTIAN MAZET

PhD fellow, École pratique des hautes
études
PSL University (Paris)
261 rue de Charenton
75012 Paris
France
christian.mazet1@gmail.com

MARIA CHIARA MONACO

Associate Professor of Greek and Roman Archaeology and History of Art, Department of Human Sciences, University of Basilicata, Potenza
Via Nazario Sauro 85
85100 Potenza PZ
Italy
mariachiara.monaco@unibas.it

VASSILIKI PATSIADA

Archaeologist, Ephorate of Antiquities for the Dodecanese
Ippoton str.
Rhodes 85131
Greece
vpatsiada@yahoo.com

MARIA PIKOULA

Civil engineer, Ephorate of Antiquities for the Dodecanese
Ippoton str.
Rhodes 85131
Greece
epilindos@gmail.com

BODIL BUNDGAARD RASMUSSEN

Researcher, National Museum of Denmark
Department of Ancient Cultures of Denmark and the Mediterranean
Frederiksholms Kanal 12
1220 Copenhagen K
Denmark
bodil.bundgaard.rasmussen@natmus.dk

NICHOLAS SALMON

Development Officer,
British School at Athens
10 Carlton House Terrace
London SW1Y 5AH
Great Britain
nicholas.salmon@bsa.ac.uk

STINE SCHIERUP

Researcher, National Museum of Denmark
Department of Ancient Cultures of Denmark and the Mediterranean
Frederiksholms Kanal 12
1220 Copenhagen K
Denmark
stine.schierup@natmus.dk

LONE WRIEDT SØRENSEN

Lecturer in Classical Archaeology, University of Copenhagen
SAXO-institute
Karen Blixens Plads 8
2300 Copenhagen S
Denmark
lws@hum.ku.dk

ALEXANDRA VILLING

Curator, British Museum
Department of Greece and Rome
Great Russell Street
London WC1B 3DG
Great Britain
avilling@britishmuseum.org

GÖSTA ENBOM MONOGRAPHS are published with the support of the “Foundation of Consul General Gösta Enbom”.

VOLUME 1

**POTTERY IN THE ARCHAEOLOGICAL RECORD:
GREECE AND BEYOND**

Edited by Mark L. Lawall & John Lund.
Aarhus University Press 2011.

VOLUME 2

RED-FIGURE POTTERY IN ITS ANCIENT SETTING

Edited by Stine Schierup and Bodil Bundgaard Rasmussen.
Aarhus University Press 2012.

VOLUME 3

THE TRANSPORT AMPHORAE AND TRADE OF CYPRUS

Edited by Mark L. Lawall & John Lund.
Aarhus University Press 2013.

VOLUME 4

**THE REGIONAL PRODUCTION OF RED-FIGURE POTTERY:
GREECE, MAGNA GRAECIA AND ETRURIA**

Edited by Stine Schierup & Victoria Sabetai.
Aarhus University Press 2014.

VOLUME 5

**A STUDY OF THE CIRCULATION OF CERAMICS IN
CYPRUS FROM THE 3RD CENTURY BC TO THE 3RD
CENTURY AD**

John Lund.
Aarhus University Press 2015.

VOLUME 6

**DOCUMENTING ANCIENT RHODES:
ARCHAEOLOGICAL EXPEDITIONS
AND RHODIAN ANTIQUITIES**

Edited by Stine Schierup.
Aarhus University Press 2019.